

Ports of Scotland **Yearbook**



2022



MARITIME
PUBLICATIONS
LIMITED

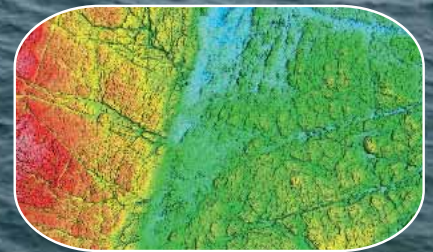
41ST EDITION

SCOTLAND'S LEADING COASTAL HYDROGRAPHIC SURVEY COMPANY



...our expertise
your advantage

- High Resolution Multibeam Bathymetric Surveys [IHO S44 Standard]
- Geophysical Surveys - Data Acquisition, Interpretation & Reporting
- Side-Scan Sonar & Magnetometer / UXO Surveys - Analysis & Reporting
- Geotechnical Surveys (Vibrocoring & Grab Samples) - Analysis & Reporting
- High Resolution Dock Wall & Marine Structure - 3D Point Cloud Surveys
- Offshore Wind, Wave & Tidal Renewable Energy Site Surveys
- UAV Aerial Imagery / LiDAR / Asset Inspection & Condition Surveys



WEB: www.aspectsurveys.com

TEL: + 44 (0) 1294 313 399

EMAIL: mail@aspectsurveys.com

NORTHWARDS

WAY AHEAD

Providing the right solutions for our customers' transport needs



The established, high-quality freight, haulage and maintenance operator in the Northern Isles.

- Freight shipping, cargo handling, road haulage and distribution
- Direct connections into Scandinavia and Europe
- Next day pallet deliveries collections throughout the UK
- Daily overnight service between all depots
- HGV workshop services
- Temperature controlled transportation
- Livestock movement
- Ships agents

Contact our depots:

Shetland
01595 694452

Orkney
01856 873030

Aberdeen
01224 213215

Scrabster
01847 892052

Inverness
01463 233299

Glasgow
01236 728108

info@northwardsltd.co.uk
northwardsltd.co.uk

Shetland | Northwards Ltd
Anderson Base, Gremista, Lerwick ZE1 0PX



BULK MATERIAL HANDLING SPECIALISTS



CONVEYORS | BULK LOADERS

WHEELED LOADERS

PARTS | SERVICE

13 UK SERVICE DEPOTS



TEREX FINLAY | TELESTACK



OFFERING THE FULL RANGE FROM HYUNDAI



OVER £6M OF STOCK | OVER 75 ENGINEERS



3 STRATEGICALLY POSITIONED IN SCOTLAND

MOLSON
Green

molsongroup.co.uk/green

Molson Group Ltd, Lochill Industrial Estate, Doune, Stirling FK16 6AD

FOR MORE INFORMATION
01179 820 123

info@molsongroup.co.uk



Ports of Scotland[©]

Serving Industry & Commerce

Ports of Scotland[©] is owned and published by Maritime Publications Ltd.

Tel: 01877 330519

Email: info@portsofscotland.co.uk

Web: www.portsofscotland.co.uk

Find us on  



Cover photograph
Aerial view of King George V Dock
©Guthrie Aerial Photography

Price £30.00

Section 4
Highlands & Islands
Pages 188-309

Section 3
North East
Pages 122-187

Section 1
South West
Pages 4-57

Section 2
South East
Pages 58-121

Section 5
Information & Features
Pages 310-313

Aberdeen	125
Arbroath	112
Ardishaig	41
Ardrossan	18
Ardeenish	267
Ayr	32
Banff	177
Berwick upon Tweed	104
Braefoot	79
Buckie	181
Burghead	186
Burntisland	76
Cairnryan	28
CalMac Harbours	56
Campbeltown	44
Clydebank	27
Corpach	243
Cromarty Firth	201
Cullen	184
Cullivoe	302
Dundee	94
Dunoon	47
Eyemouth	102
Fairlie	38
Findochty	186
Fraserburgh	162
Gairloch	252
Girvan	30
Glasgow	14
Gourdon	178
Grangemouth	80
Greenock	8
Helmsdale	254
Holy Loch	42
Hopeman	184
Hound Point	79
Hunterston	16
Invergordon	201
Inverkeithing	101
Inverness	191
Johnshaven	178
Kallin	267
Kinlochbervie	251
Kirkcaldy	78
Kirkwall	276
Kishorn	259
Kyle of Lochalsh	253
Leith	72
Lerwick	288
Leverburgh	267
Lochinver	250
Lochmaddy	267
Loch Ryan	29
Lossiemouth	179
Lyness	282
Macduff	173
Mallaig	246
Miavaig	267
Methil	77
Montrose	115
Nigg	221
Oban	48
Perth	107
Peterhead	149
Portknockie	184
Portree	255
Portsoy	178
Rosehearty	177
Rosyth	63
Rothsay	47
Scalloway	300
Scapa Flow	280
Scrabster	234
Stonehaven	179
Stornoway	268
Stromness	284
Sullom Voe	304
Tarbert	43
Tobermory	256
Troon	35
Uig	254
Ullapool	262
Whitehills	186
Wick	230

Whilst every care has been taken to ensure the accuracy of the information in this publication Maritime Publications Ltd, (trading as Ports of Scotland) it's shareholders, directors, employees or anyone acting on their behalf do not accept responsibility for any errors, omissions, misrepresentation or misinterpretation. Port users are recommended to verify with the respective Port and Harbour Authorities that the information given in this publication is correct and remains valid for the time of and intended use. Information in the advertisements should be verified with the advertisers. No part of the publication may be reproduced in any form or by any electronic or mechanical means including information storage and retrieval systems without the written permission of the publishers.

© 2021/22 Maritime Publications Ltd. All rights reserved.



SMS LTD

Vessel Charter and Logistical Support



Tel: +44 (0)1852 300589

info@specialisedmarinesupport.com

Personnel Transfers | Equipment Transfers | Windfarm Support



Specialised Marine Support Ltd (SMS) is an ISO 9001:2008 accredited company based in Scotland providing support vessels to the offshore renewables and offshore construction industries throughout Europe. All vessels are road transportable.

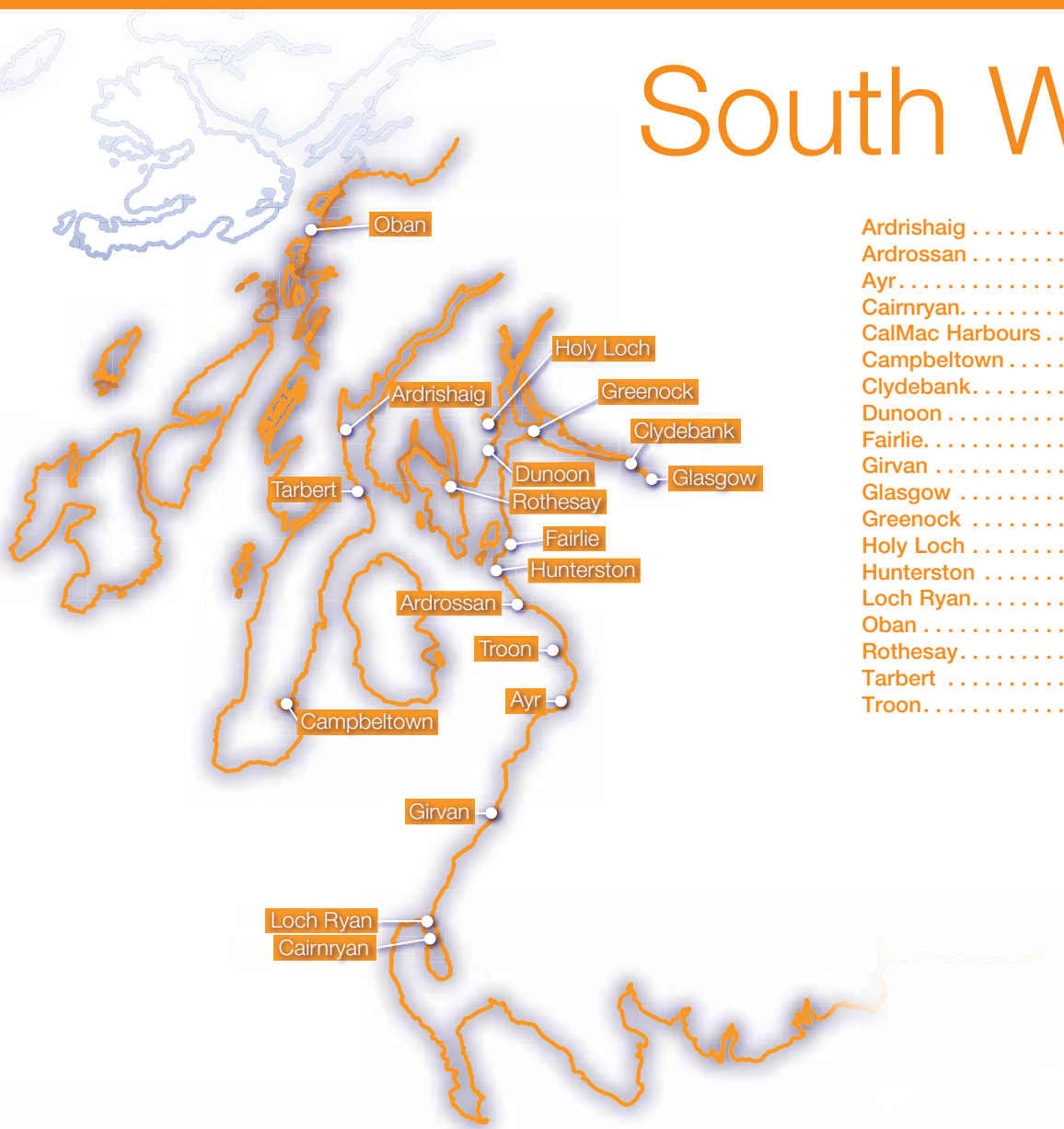


Cable Support | Guard / Safety Vessel | Survey Support

www.specialisedmarinesupport.com



South West



Ardishaig	41
Ardrossan	18
Ayr	32
Cairnryan	28
CalMac Harbours	56
Campbeltown	44
Clydebank	27
Dunoon	47
Fairlie	38
Girvan	30
Glasgow	14
Greenock	8
Holy Loch	42
Hunterston	16
Loch Ryan	29
Oban	48
Rothesay	47
Tarbert	43
Troon	35



PORT AUTHORITY
Clydeport Operations Ltd.
16 Robertson Street
Glasgow
G2 8DS
Tel:
Email:
Web:

0141 221 8733
info@peelports.com
www.peelports.com

Enquiries and quotes regarding the port facilities and services should be addressed to: Marketing Department at the above address.

PRINCIPAL OFFICIALS

Port Director - Clydeport:	Jim McSporran
Tel:	0141 241 8502
Property Manager:	Craig Donald
Tel:	0141 241 8503
Senior Manager Marine Operations:	Charlie Simcox
Tel:	01475 886320
Sales:	Jim McSporran
Tel:	0141 241 8502
Terminal Manager – Glasgow:	Colin Bankier
Tel:	0141 445 2241
Operations Manager – Glasgow:	Callum McMahon
Tel:	0141 445 2241
Business Unit Manager – Greenock & Dublin:	Craig Collins
Tel:	0147 588 6327
Operations Manager – Greenock:	Hugh Hardie
Tel:	01475 726171
Hunterston:	
Port Director – Clydeport:	Jim McSporran
Tel:	0141 241 8502
Ardrossan:	
Port Director – Clydeport:	Jim McSporran
Tel:	0141 241 8502

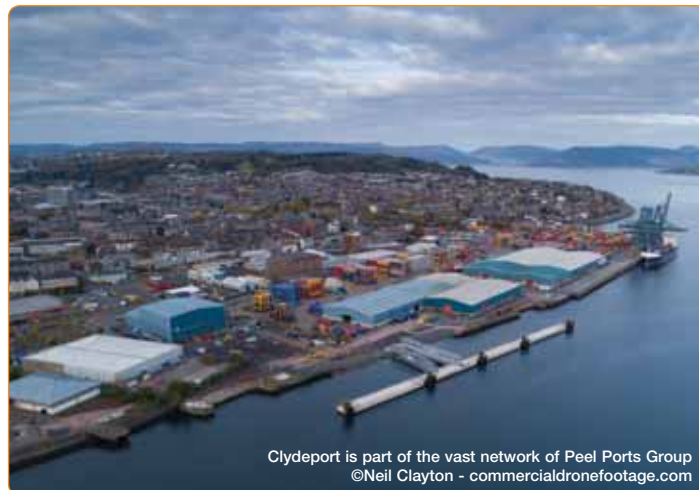
About Peel Ports Clydeport: Scotland's gateway to the world

Clydeport is part of the vast network of Peel Ports Group, one of the largest port operators in the United Kingdom.

No matter which one of our locations you visit, you'll find that we're more than just a provider of first-class facilities and services; we also offer customers an integrated transport solution within an interconnected network of strategically situated ports.

Our world-class facilities and excellent locations mean that we're able to serve a variety of different businesses, connecting Scotland to the rest of the world. Whether you're looking for the deepest sea entrance in Northern Europe or the busiest cruise terminal in Scotland, Clydeport is home to some of the biggest, deepest, busiest and most advanced facilities in Europe. Clydeport's main terminals are King George V Dock Glasgow, Greenock Ocean Terminal, Hunterston and Ardrossan.

But it's not just our locations that set us apart, we're also the Harbour Authority of the river Clyde and its Estuary, managing a jurisdiction of 450



Clydeport is part of the vast network of Peel Ports Group
©Neil Clayton - commercialdronefootage.com

square miles. This stretches from the Albert Bridge in Glasgow to a line drawn between Corrygills Point on the Isle of Arran and Gales on the Ayrshire Coast, including the sea lochs which branch off the inner firth.

Responsibilities and Operations

Within the jurisdiction area, the company's main business is the provision of port facilities and services, with property investment and development activities a substantial and growing contributor to both revenue and profit. Clydeport is also responsible for the navigable channel, lighting, buoyage and the provision of harbour facilities for shipping and commerce.

Clydeport handles key commodities such as containers, forest products, steel, Agri bulks, project and bulk cargoes. We also operate one of Scotland's busiest cruise terminals and can offer a wide-range of port-centric and specialist development properties as well as customer logistic solutions.

Whether you represent a small organisation or a large blue chip company, Peel Ports believes in building long-lasting partnerships that will help you to grow and improve your supply chain.

History of Clydeport

Greenock, a town 20 miles downstream of Glasgow, developed port facilities during the 17th century. The small port enjoyed modest success thanks to the herring trade and sugar imports until loss of trade led it to be reconstituted by the Greenock Harbour Trust in 1888.

Eventually, in 1966, the Greenock Harbour Trust, The Clyde Lighthouses Trust and the Clyde Navigation Trust merged to become the Clyde Port Authority. Peel Ports acquired the Clyde Port Authority in 2003, the Authority comprised the ports of Greenock, King George V Dock (KGV), Hunterston and Ardrossan.

Clydeport today benefits from being part of the Peel Ports Group and is the largest port operator on Scotland's west coast. It boasts world-class facilities as well as first class service at each of its ports locations.

Ports

Clydeport's success is due to continued investment in its facilities, its range of added value services and scope provided by being part of one of the largest port groups in the United Kingdom. Clydeport's principal harbour facilities include King George V Dock in Govan, Greenock Ocean Terminal, Hunterston and Ardrossan.

Other facilities include Inchgreen, Finnart Oil Terminal and Rothesay Dock. Its ports provide a wide range of functions, including deep water berthage and facilities for handling all main categories of shipping and cargoes, which are fundamental to the success of many Scottish businesses across a broad range of industries.

The strategic terminals form an integral part of the economic infrastructure of the west of Scotland by providing a gateway to the rest of the UK, Ireland, European and US markets.





SAFE FLOATING ACCESS

Specialist pontoon hire for: **ports, harbours & marinas**

- \ TEMPORARY WORKBOATS
- \ BRIDGE REPAIRS & INSPECTIONS
- \ PILES & DOLPHINS
- \ SUB SEA LIFTING
- \ DIVING PLATFORMS
- \ QUAY, WALL & FENDER REPAIRS



- ✓ Stability calcs included as standard
- ✓ 24 hour Emergency Mobilisation
- ✓ Extras inc: Spuds, engines, winches & cranes
- ✓ Full structural calculations
- ✓ Compliant with MCA regulations
- ✓ 100% Safety Record

01326 702 260 | ScaffFloat.co.uk [f](#) [@](#) [v](#)

Please contact Ross your local approved installer...

I-SCAFF
ACCESS SOLUTIONS

t. 01592 800 335

w: i-scaff.com [f](#) [@](#)



Greenock



PORT AUTHORITY

Clydeport Operations Ltd.
Greenock Ocean Terminal
Patrick Street
Greenock
PA16 8UU
Tel:
Email:

01475 726171
info@peelports.com

PRINCIPAL OFFICIALS

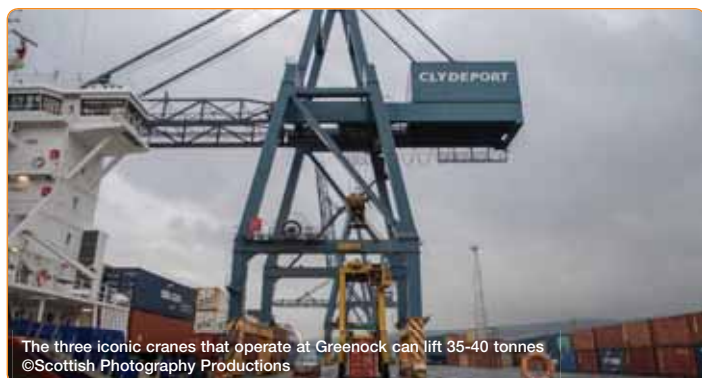
Business Unit Manager – Greenock: Craig Collins
Terminal Manager – Greenock: Hugh Hardie

Location: Latitude 55° 57'N
Longitude 04° 44'W

Greenock: Home to Scotland's deepest container terminal

Our facilities at Greenock are situated in a highly accessible location with immediate access to a local population of over 2 million people. Excellent links to Glasgow and the central belt, a railway station, two nearby airports and motorway access via the A8/M8 ensure that Greenock is ideally placed as a local transit hub. We also have regular feeder services from Le Havre, Bilbao, Antwerp, Southampton, Belfast and Liverpool.

However, it's about much more than connectivity. Take our container offer at Greenock for example. An extensive 372 metre quay length and 12.6 metre CD allows vessels to be accommodated alongside with ease and simplicity. Three iconic cranes which now form an integral part of the Greenock skyline can lift between 35-40 tonnes with an outreach of 13 containers across.



The three iconic cranes that operate at Greenock can lift 35-40 tonnes
©Scottish Photography Productions

We're not short on storage areas either; Greenock Ocean Terminal is within a 16-hectare site and has an additional benefit of a 25,000m² covered storage, a bonded multi-user warehouse, TEU capacity of 7,000, 116 reefer points, M&R of containers and reefers on site, container weighing facilities approved by the MCA, OOG handling on request, devanning/loading (securing) of containers and cargo storage facilities.

The terminal handles a wide-range of palletised materials, steel, building products, forest products, including pulp and paper reels. These are all stored in our quayside warehouses to ease unloading and access to cargo.



Aerial view of Greenock Ocean Terminal
©Neil Clayton - commercialdronefootage.com

New dedicated cruise berth

Greenock is also home to the dedicated Greenock Cruise berth. This facility has allowed the port to grow into one of Scotland's busiest cruise terminals. The new £12m cruise berth can take vessels up to 345m long.

Sheltered deep-water anchorage is also available in the river and also at Loch Striven for the use of large vessels to lay-up.

Port Facilities:

ANCHORAGES

There are extensive deep and sheltered anchorages at Tail of the Bank, off Greenock and elsewhere in the Firth of Clyde. Contact Estuary Radio on 0151 949 6651.

BERTHS

372m of Quay with 12.6m CD.

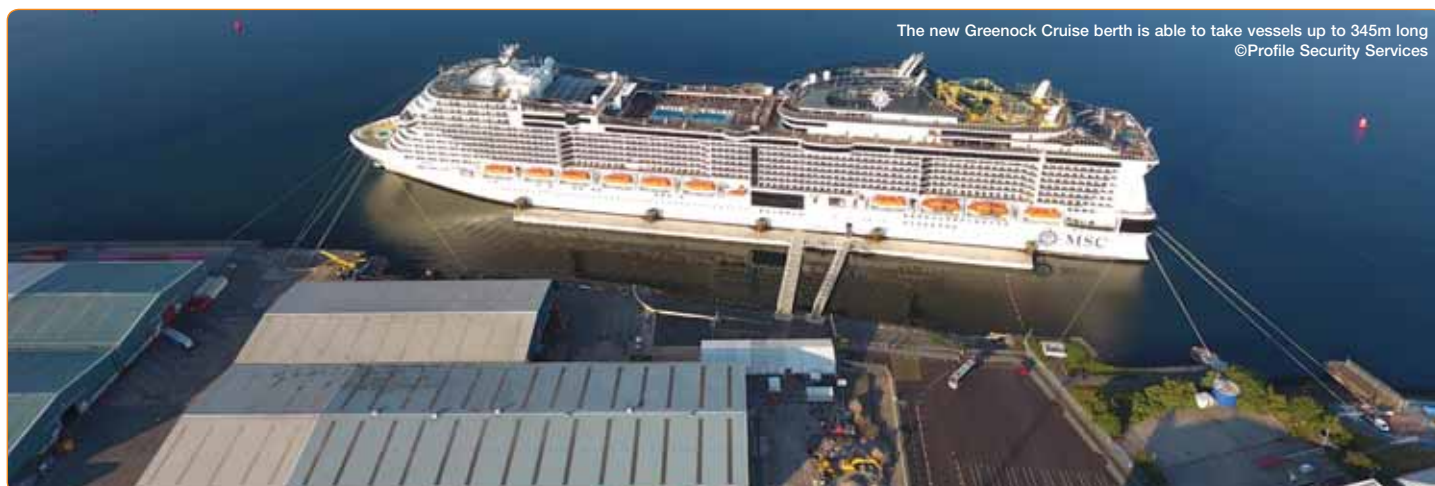
CARGO HANDLING / PLANT

Numerous cranes available including:

- 2 Shore-side container cranes 35t (32m reach across).
- 1 Shore-side container crane 40t (32m reach across).
- 11 Straddle carriers.
- MAFI & Tugmaster units.
- 2 Empty container stackers.
- Large selection of forklifts ranging from 1t to 14t.

CRUISE SHIPS

Cruise ships have space to manoeuvre off the terminal and come alongside at any state of the tide. Quayside space for 60 coaches, which allows up to 3,500 passengers to quickly embark or disembark. Porterage and baggage handling facilities for embarking and disembarking passengers. Secure parking facilities on site for passenger's cars whilst on a cruise. Port is open 24/7 with tight security.



The new Greenock Cruise berth is able to take vessels up to 345m long
©Profile Security Services





OILFAST
Fuelling Scotland

SCOTLAND'S LEADING SUPPLIER IN THE MARINE INDUSTRY

With Depots across the country, we offer a national supply of Marine Gas Oil and other fuels to both storage tanks and direct to vessels. We offer a bespoke, tailored delivery service at great prices.

For more information or to place an order, call Dianne Graham on:

tel: **0800 233 5100**

email: **dianne.graham@oilfast.co.uk**

OILFAST
Fuelling Scotland

Dianne Graham
Marine Account Manager
m. 07702 559 653
e. dianne.graham@oilfast.co.uk
www.oilfast.co.uk

Unit 12b
Dalcross Ind. Estate
Inverness IV2 7XB
t. 0800 233 5100



Q8 Oils
Authorised Distributor

FUCHS

ROCK OIL



www.oilfast.co.uk



ECOSSE MARINE

**Fresh & Frozen Provisions,
Cabin, Deck & Engine consumables,
Bonded stores and logistics. Direct to vessel service**

Solutions delivered above & below the waves!

+44 (0)1324 624492
supply@ecossemarine.com



Greenock Ocean Terminal has a well established role in handling specialist cargoes
©Scottish Photography Productions

ELECTRIC POWER

By arrangement.

FEEDER SERVICE

Feeder services connect with deep-sea services in:

- Southampton
- Liverpool
- Belfast
- Bilbao
- Le Havre
- Antwerp
- Dublin
- Portugal

FRESH WATER

Supplies available at all berths.

OPERATING HOURS

Routine receipt and delivery of goods Mon – Fri, 0800 – 1700 hours, or as required.

Container receivables Mon – Thurs 24-hours, Fri, 0700 – 1900 hours, weekends on request.

Berthing and working 24-hours, as required.

PILOTAGE

Clydeport is responsible for all pilotage in the river and estuary. Pilotage is compulsory. See Pilotage Directions, NTM No 2.

SECURITY

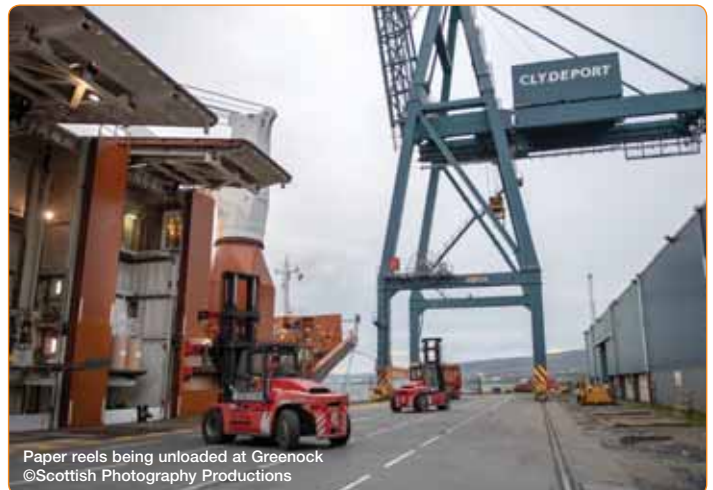
Approved by TRANSEC.

SPECIFICATIONS

Main Quay length	372m.
Maintenance depth	12.6m.
Tidal range	3m.
Water line	25 tph.



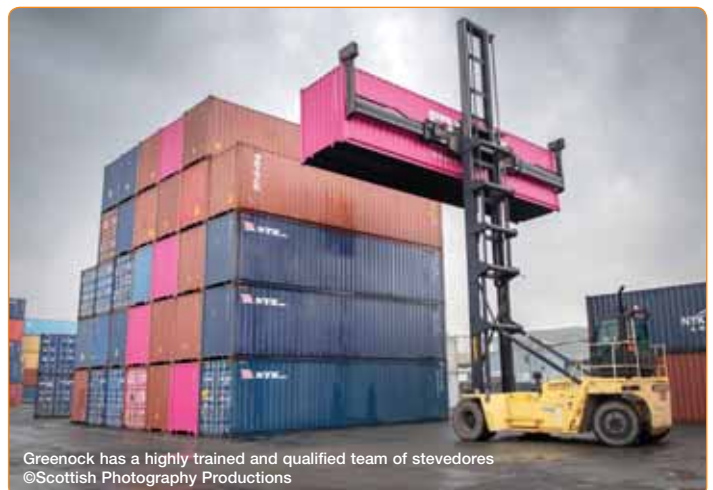
All Clydeport cargo is stored in our quayside warehouses to ease unloading and access to cargo
©Scottish Photography Productions



Paper reels being unloaded at Greenock
©Scottish Photography Productions



Tugboat services are available at all Clydeport Ports
©Scottish Photography Productions



Greenock has a highly trained and qualified team of stevedores
©Scottish Photography Productions



Inchgreen dry dock is 305m long and 45m wide
©Scottish Photography Productions





Aquaculture Service Vessels






Inverlussa Marine Services
T: +44 (0)1680 812109 M: 07990 595 909 E: info@inverlussa.com
www.inverlussa.com

Dedicated floating cruise berth
Quay length 200m, suitable to take vessels up to 345m
Maintenance depth 9.5m.

Tugboats, anchoring and tendering on request.
Contact port office for further details.

STEVEDORING

All stevedoring at Greenock is arranged by Clydeport Operations Ltd.

STORAGE

Total area 20.3 ha.
Total covered modern warehousing 25,000 m².

TOWAGE

Tugs are available from:

Svitzer Marine Ltd.

Greenock Ocean Terminal, Patrick Street, Greenock, PA16 8UU
Tel: 0845 608 1353 Email: gbgrk.operations@svitzer.com
Web: www.svitzer.com

Clyde Marine Services Ltd.

Victoria Harbour, Greenock, PA15 1HW
Tel: 01475 721281
Fax: 01475 888023
Web: www.clyde-marine.co.uk

TRANSPORT LINKS

Greenock Ocean Terminal has excellent transport links to Glasgow and the central belt with immediate access to the motorway network via the A8/M8. It is approximately 23 miles and a 30 minute drive from Glasgow city centre. Greenock has a railway station which is on the Inverclyde Line with frequent services to Glasgow Central.

Glasgow, Edinburgh and Prestwick International airports are also within easy reach.

VHF RADIO COMMUNICATION

All movements are monitored from Estuary Radio on VHF channel 12.

Maritime Progress

MARITIME SAFETY

Maritime Progress is a creator, manufacturer and supplier of photoluminescent safety signage, publications, ISM posters and tapes.

Leading the industry with providing legislative compliant safety products and services on an International level.



Lifesaving
LSS/LSA



Fire-Fighting
FES/FFE



Warning
WSS



Means of Escape
MES



Hazard
IMDG & UN GHS



Mandatory
MSS



Emergency
EES



Prohibition
PSS



Fire Control
SIS



Telephone: +44 (0)1737 763400 | Email: info@maritimeprogress.com | www.maritimeprogress.com



Hunterston

A place with blue-green economy at its heart

Overview

Hunterston PARC's vision brings together energy intensive industries with low cost, on-site power and heat generation, offering a unique opportunity to develop innovative, self-sustaining and cost-effective operations.

Features

- Over 320-Acres of available space
- Plot sizes can accommodate up to 4,000,000 sq ft
- On-site rail connectivity / passenger within 0.7 miles
- On-site deep water port and dry-dock
- Significant grid connections (Western Link High Voltage Direct Current)
- On-site water abstraction and discharge
- Proximity to Glasgow & Prestwick Airport
- Favourable planning status
- Significant support from UK and Scottish Government

Vision

Our vision is to create a nationally significant Energy and Marine campus. Bringing together leading industry operators, world class universities and the latest innovators to deliver technological advances in areas such as power generation and aquaculture.

Hunterston Port and Resource Centre (PARC) strengths lie in its location with its deep water port, on-site rail connectivity, national grid connections and sheer size, which allows for a broad range of options for occupation.

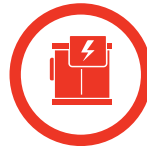
Over 320 Acres of Available Space for:

- Land leasing
- Build to specification and lease
- Long leasehold sales
- Build to sell
- Build to own and operate

Significant Development Opportunities

Hunterston PARC offers you the unrivalled combination of space, facilities and connectivity for Scottish industry with energy at its heart. It offers infrastructure that enables efficient logistics and is ideally suited to:

- Support development of new technologies
- Develop and integrate international and UK research and development activity on site
- Develop skills and training facilities including parallel research programmes with Strathclyde University
- Support links with wider Ayrshire skills, productivity and innovation programmes
- Build a leading international centre for advanced technology,
- SMART systems and energy management



Energy & Power Generation



Offshore Manufacture



Recycling of Energy Assets



Vessel Inspection and Repair



Warehousing & Office Space



Aquaculture



For further information contact: Jim McSporran
Port Director, Clydeport | **T:** +44(0)141 241 8502 | **M:** +44(0)7394 567176 | **E:** james.mcsporran@peelports.com



Inchgreen

A first class multi-modal port located on the firth of Clyde

Inchgreen offers a wide-range of development opportunities and has been identified in the National Renewables Infrastructure Plan (NRIP) as a potential offshore renewables site.

The 31 acre site includes one of Scotland's largest dry dock facilities, a repair quay (also known as load out berth) and extensive land suitable for development.

The repair quay is 390m long, with a minimum water depth of 7.5m, capable of increasing to a dredged depth of 9.0m. The dry dock is multi-purpose and there is also a small barge berth at the east end of the repair quay.

The site offers infrastructure that enables efficient logistics and is ideally suited to:

- Decommissioning
- Vessel mobilisation
- Project cargo
- Supporting the offshore sector
- Port related activities
- Marine construction or ship repair
- The site also boasts immediate links to Peel Ports purpose built container facilities at Greenock Ocean Terminal, two miles West.

Key opportunities

Operational dry dock, berthing quay and adjoining land with road and sea access

One of Scotland's largest dry docks, 305m long x 45m wide

Repair quay, 390m long, with a minimum water depth of 7.5m, capable of increasing to a dredged depth of 9m

Berthage and direct access to the deep water channel in the Firth of Clyde

Existing warehouse space **27,000 sq ft of space available for use**

Facilities suitable for a variety of uses **in addition to established uses of ship repairing marine construction**

Flexible lease terms

Local engineering and waste handling services and expertise

Proximity to **scrap flows for recycling and onward sale**

Availability of lay up areas nearby at Loch Striven and Firth of Clyde anchorages

Site location

Inchgreen is located on the south bank of the River Clyde about 1.8 miles upstream of Greenock Ocean Terminal. It offers a berthing quay at the east end of the repair quay and adjoining land with road and sea access. It comprises of storage and working areas.

Connectivity

Road

A8, M8, A78, M77, M74, M73

Rail

Local rail access connecting to Glasgow

Air

Glasgow International (15 miles), Glasgow Prestwick (39 miles)

Water

Direct access to deep-water channel in Firth of Clyde



For further information contact: Jim McSporran
Port Director, Clydeport | T: +44(0)141 241 8502 | M: +44(0)7394 567176 | E: james.mcsporrans@peelports.com

Glasgow



PORT AUTHORITY
Clydeport Operations Ltd.
King George V Dock
Govan
Glasgow
G51 4SD

Tel: 0141 445 2241
Email: info@peelports.com

PRINCIPAL OFFICIAL
Terminal Manager:

Colin Bankier

Operations Manager:

Callum McMahon

Sales: Jim McSparran
Tel: 0141 241 8502

Location: Latitude 55° 52'N
Longitude 04° 17'W

King George V Dock: The city-centric gateway to Scotland

Resting on the banks of the Clyde and just ten minutes away from the bustling city centre of Glasgow, King George V Dock (KGV) is the main up-river port serving the region. Centrally located, the terminal sits on the doorstep of Scotland's extensive rail and motorway network, allowing for fast and easy distribution of cargo.

The dock, which opened in July of 1931, is located on a vast site with 32.6 hectares of outside storage and 60,000m² of sheltered storage space. King George V Dock also boasts a 1,586m long quay including a 529m long riverside quay with a water depth of 8.5m.

The vast storage space, quay and water depth is complemented by state-of-the-art equipment including recent investments such as two Gottwald heavy lift bulk cranes and the purchase of a new multi-docker crane. KGV can handle agri-bulks, dry bulks, forest products, renewables, metals and project cargo commodities.

Port Facilities:

ANCHORAGES

Vessels waiting to make the passage up-river to Glasgow may be advised to lie at Tail of the Bank, a large sheltered anchorage off Greenock, or elsewhere in the Firth of Clyde.

BERTHS

Total quay length of 1,586m with 8.5m CD.

BUNKERING

Fuel, diesel/gas oil can be provided at all berths by barge or road tanker.

CRANE HIRE / PLANT

Several cranes available including:

- 2 Gottwald HMK 260 EG harbour mobiles (100 tonnes at 19m radius).
- 1 multi-docker CH65C material handler – capable of lifting up to 400 tonnes per hour.
- Several wheeled shovels (Volvo 150E).
- Various forklift trucks with up to 21 tonne capacity.
- Tugmaster and Mafi trailers.

ELECTRIC POWER

By Arrangement.

FRESH WATER

Supplies available at all berths.

MAXIMUM SIZE OF VESSELS

Ships drawing up to 9.4m in fresh water can make the river passage to or from Glasgow.

MEAN TIDAL RANGE

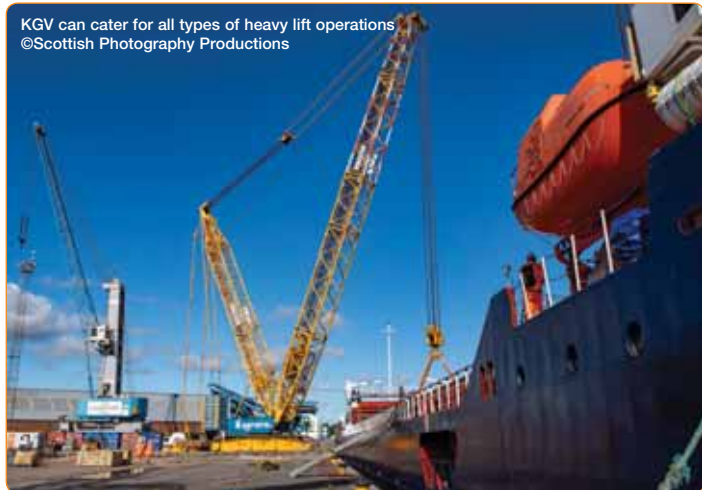
Spring 4m.

Neaps 2.4m.

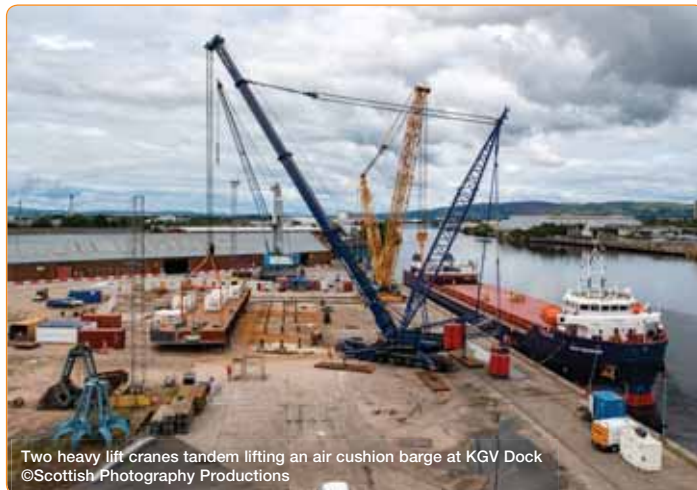
LOA 225m.

Beam of 32m.

KGV can cater for all types of heavy lift operations
©Scottish Photography Productions



Two heavy lift cranes tandem lifting an air cushion barge at KGV Dock
©Scottish Photography Productions



KGV Dock is the main up-river port on the Clyde
©Scottish Photography Productions



KGV Dock boasts a 1,586m long quay
©Scottish Photography Productions



PILOTAGE

Clydeport as CHA, is responsible for all pilotage in the River and Estuary. Pilotage is compulsory. See Pilotage Directions, NTM No. 2. Contact Estuary Radio on 0151 949 6651.

SECURITY

KGV Dock has a PFSP approved by TRANSEC.

STEVEDORING / PORTERAGE

All stevedoring within Glasgow is arranged by Clydeport Operations Ltd.

STORAGE

Total area 32.6 hectares, covered storage is 60,000m².

TOWAGE

Tugs are available from:

Svitzer Marine Ltd.

Greenock Ocean Terminal, Patrick Street, Greenock, PA16 8UU

Tel: 0845 608 1353

Email: gbgrk.operations@svitzer.com Web: www.svitzer.com

Clyde Marine Services Ltd.

Victoria Harbour, Greenock, PA15 1HW

Tel: 01475 721281 Fax: 01475 888023

Email: enquiries@clyde-marine.co.uk Web: www.clyde-marine.co.uk

VHF RADIO COMMUNICATION

All movements are monitored from Estuary Radio on VHF channel 12.

WASTE DISPOSAL

Where dedicated skips are required for large quantities of garbage, 24-hours' notice must be given to Clydeport.



sales@metecgroup.com

Metec Group are the largest Cathodic Protection manufacturer globally with sacrificial anode production facilities in Tunisia, and the United Kingdom. The Group boasts a combined galvanic anode weekly capacity in excess of 250 tonnes for aluminium and zinc anode production.

- Sacrificial Anode Manufacture
- Design of CP Systems
- On-Site Surveys & Inspection
- Sacrificial Anode install
- CP Monitoring Systems
- Pre/Post Dive Inspections
- ICCP Systems
- MGPS Anodes



- Offshore Renewable Energy
- Ports & Harbour Construction
- Oil & Gas Rigs
- Ship building and Repair
- Subsea Pipelines
- Subsea Oil & Gas Assets



www.metecgroup.com



Visage House, 2 Shaftsbury Avenue, South Shields, NE34 9PH
Office Telephone: + 44 (0)191 7316010



KGV can cater for all types of heavy lift operations
©Scottish Photography Productions



KGV Dock offers full service cargo handling
©Scottish Photography Productions



KGV Dock's location allows for fast and easy distribution of all cargoes
©Scottish Photography Productions



KGV Dock is recognised as one of the safest ports in the UK
©Scottish Photography Productions



Hunterston PARC



PORT AUTHORITY
Clydeport Operations Ltd.

Hunterston

FAIRLIE

Ayrshire

KA29 0AZ

Email: info@peelports.com

PRINCIPAL OFFICIAL

Port Director – Clydeport:

Tel: Jim McSparran

0141 241 8502

Location: Latitude 55° 45' N
Longitude 004° 52.5' W

Hunterston Port and Resource Centre (PARC) is a nationally significant industrial and multi-modal port located just 40 minutes from Glasgow. It is the only single site in the UK that offers a deep-water port, 300 acres of brownfield site and onward transport links by road and rail.

It offers infrastructure that enables efficient logistics and is an ideal location for:

- New energy intensive industry
- New power generation
- Manufacture and service of assets for the offshore wind sector
- Onshore recycling of assets from the energy sector
- Inspection repair and maintenance of high value vessels

Hunterston PARC's vision is to bring together energy intensive industries with low cost, on-site power and heat generation, offering a unique opportunity to develop innovative, self-sustaining and cost-effective operations.

The historical industrial site has the potential to transform Scotland's prospects in a variety of key economic sectors, import and export opportunities for decades to come.

Port Facilities:

BERTHS

Inner Berth – Length 300m, DWT 95,000, Draft 19.8m

Outer Berth – Length 443m, DWT 350,000, Draft 23m

SEA ENTRANCE

26m channel depth

2m under keep clearance

3m tidal range

CRANAGE

By arrangement.

BUNKERING

From road tanker or ship/bunker barge.

ELECTRIC POWER

By arrangement.

FRESH WATER

Yes.

MAXIMUM SIZE OF VESSELS

N/A

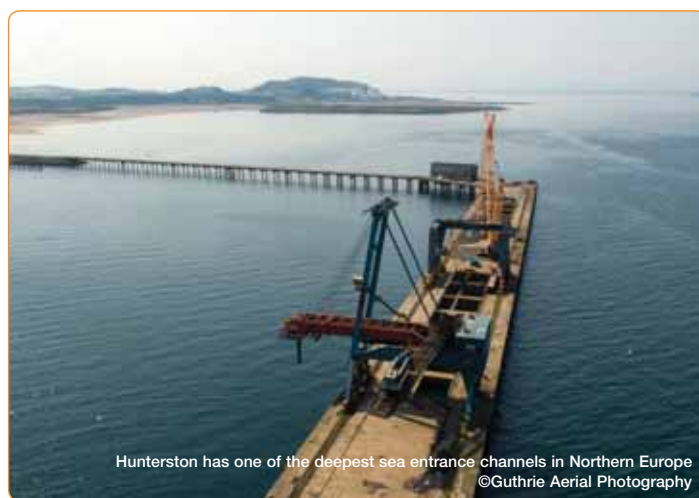
MEAN TIDAL RANGE

Spring 3.4-0.4 = 3.0m

Neaps 2.7-1.0 = 1.7m



Hunterston Parc is a multi-modal port located just 40 minutes from Glasgow
©Guthrie Aerial Photography



Hunterston has one of the deepest sea entrance channels in Northern Europe
©Guthrie Aerial Photography

PILOTAGE

Clydeport is responsible for all pilotage in the river and estuary. Pilotage is compulsory. See Pilotage Directions, NTM No 2. Contact Estuary Radio on 0151 949 6651.

SECURITY

Approved by TRANSEC.

STEVEDORING / PORTERAGE

All stevedoring within Hunterston is arranged by Clydeport Operations Ltd.

TOWAGE

Tugs are available from:

Svitzer Marine Ltd.

Greenock Ocean Terminal, Patrick Street, Greenock, PA16 8UU

Tel: 0845 608 1353

Email: gbrk.operations@svitzer.com

Web: www.svitzer.com

Clyde Marine Services Ltd.

Victoria Harbour, Greenock, PA15 1HW

Tel: 01475 721281 Fax: 01475 888023

Email: enquiries@clyde-marine.co.uk

Web: www.clyde-marine.co.uk

VHF RADIO COMMUNICATION

All movements are monitored from Port Control Radio on VHF channel 12.

WASTE DISPOSAL

Where dedicated skips are required for large quantities of garbage, 24-hours' notice must be given to Clydeport.



West of Scotland Heavy Haulage

West of Scotland Heavy Haulage are an established heavy haulage company specialising in all types of transport in the UK and Eire. From initial enquiry our team of professional and experienced staff will find the best solution to meet your needs from suitable vehicles to route planning, site surveys, permits and escorts - everything to ensure fast efficient trouble-free movements.



Simply the West

West of Scotland Heavy Haulage
2a Dunnswood Road, Wardpark South
Cumbernauld, Glasgow G67 3EN

contact: Jimmy Campbell
t: 01236 807999 m: 07900 918676
e: jimmy@westofscotlandheavyhaulage.com



Ardrossan



PORT AUTHORITY

Clydeport Operations Ltd.

Ardrossan

KA22 8DB

Email: info@peelports.com

PRINCIPAL OFFICIAL

Port Director – Clydeport:

Jim McSporran

Tel: 0141 241 8502

Senior Manager Marine Operations:

Charlie Simcox

Tel: 01475 886320

Location:

Latitude 55° 38'N

Longitude 04° 49'W

Ardrossan is located on the north Ayrshire coast and enjoys excellent transport links by land, sea and air. It is situated on the A78 which runs the length of the scenic Ayrshire coast and has several radial A roads for Glasgow which is approximately 30 miles away. Ardrossan Harbour is used by commercial, ferry and leisure craft.

As Clydeport's main centre for ferry traffic to Isle of Arran, approximately 800,000 passengers use the Ardrossan-Brodick crossing each year. From May a summer ferry service takes passengers and vehicles across the Firth of Clyde from Ardrossan to Campbeltown. The service runs throughout the summer and details are available at www.calmac.co.uk.

The harbour is in the process of regeneration with a £50 million development plan. The project will see acres of derelict land surrounding the harbour redeveloped to become a prime site for further commercial and leisure use.

The inner harbour is a popular marina complex currently accommodating 250 berths, whilst the outer harbour comprises 2 roll-on/roll-off berths and a quayside berth for vessels up to 100 metres LOA.

Eglinton Dock and Tidal Basin

Covering an area of 39,000m² the dock and adjoining tidal basin have roll on/roll off berths and there is a neighbouring railway station for passenger traffic.

Large parking areas are provided for vehicles and trailer traffic awaiting shipment.



M.V. Isle of Arran Roll On/Roll Off car and passenger ferry

Port Facilities:

ANCHORAGES

Deep-water anchorages are available in the estuary.

CRANEAGE

By arrangement.

ELECTRICAL POWER

By arrangement.

FACILITIES

- 250 berth marina complex.
- Passenger ferry terminal.
- Passenger rail terminal.
- Parking facilities.

FRESH WATER

By arrangement.

PILOTAGE

By arrangement with Clydeport. See Pilotage Directions, NTM No 2. Contact Estuary Radio on 0151 949 6651.

TRANSPORT LINKS

Ardrossan is 30 miles from Glasgow.

The port has a main line passenger rail terminal which connects with the ferry service, and A-road access to motorway links throughout Scotland.

CalMac Ferry leaving Ardrossan Harbour
©Tony Barr Photography



Aerial view of Ardrossan Harbour
©Tony Barr Photography



Clydeport Useful Contacts:

ADMIRALTY CHARTS & COMPASS ADJUSTING

Poseidon Navigation Services Ltd.

Carestown Steading, Deskford, Buckie, Moray, AB56 5TR

Tel: 01542 841245 Mob: 07787 417797

Email: tom.gunn@poseidonnavigation.com

Web: www.poseidonnavigation.com

CATHODIC PROTECTION

Metec Group.

Visage House, 2 Shaftsbury Avenue, South Shields, NE34 9PH

Tel: 0191 731 6010

Email: info@metecgroup.com

Web: www.metecgroup.com

CHANDLERY / SHIPS STORES

Ecosse Marine Ltd.

Unit 8, Forbes Court, Middlefield Ind. Estate, Falkirk, FK2 9HQ

Tel: 01324 624492 Fax: 01324 637144

Email: info@ecossemarine.co.uk

Web: www.ecossemarine.co.uk

Gael Force Marine.

16-18 Earl Haig Road, Hillington Ind Estate, Glasgow, G52 4JU

Tel: 0141 941 1211

Web: gaelforcemarine.co.uk

CONSULTING ENGINEERS

AeCOM.

7TH Floor, Aurora, 120 Bothwell Street, Glasgow, G2 7JS

Tel: 0141 248 0300 Email: jill.meikle@aecom.com

Web: www.aecom.com

Arch Henderson & Partners Ltd.

142 St Vincent Street, Glasgow, G2 5LA

Tel: 0141 227 3060 Email: glasgow@arch-henderson.co.uk

Web: www.arch-henderson.co.uk

Atkins Ltd.

2 Atlantic Square, Glasgow, G2 8JQ

Tel: 0141 220 2000 Email: info@atkinsglobal.com

Web: www.atkinsglobal.com

Graham Construction.

1 Seaward Place, Centurion Business Park, Glasgow, G41 1HH

Tel: 0141 418 5550 Fax: 0141 429 1129

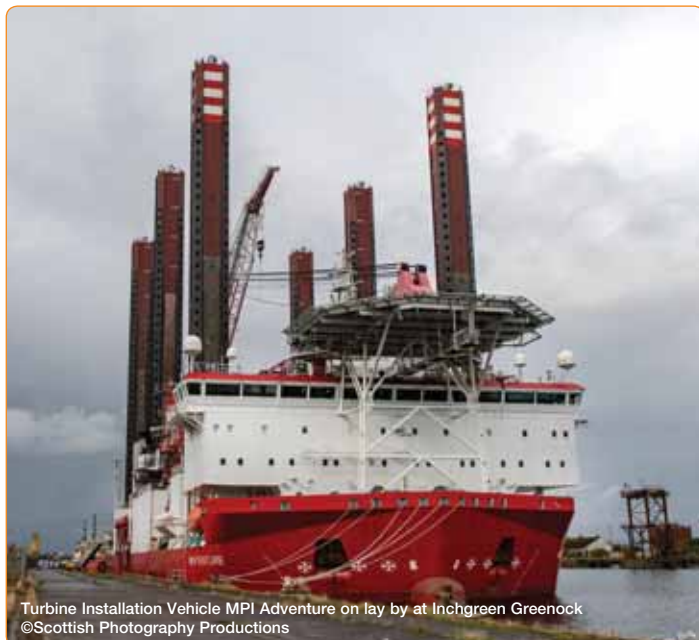
Web: www.graham.co.uk

Mott MacDonald.

1 Atlantic Quay, Broomielaw, Glasgow, G2 8JB

Tel: 0141 222 4500 Fax: 0141 221 2048

Web: www.mottmac.com



Turbine Installation Vehicle MPI Adventure on lay by at Inchgreen Greenock
©Scottish Photography Productions



Transforming Scotland's ports

Drawing on our integrated offer and global experience, we plan, design and deliver ports for the future.

aecom.com

Contact Jill Meikle for more information:
+44 (0)141 275 6535
jill.meikle@aecom.com



KGV Dock plays a vital role in Scotland's infrastructure
©Scottish Photography Productions

Do you understand the environmental risks in your port or harbour?

- Emergency environmental response and planning services across many of the UK's ports and harbours
- Accredited by the MCA for sheltered / enclosed waters, coastal and large estuary and shoreline clean-up
- Ready to respond to all scales of marine spill events with any number deployments
- Prepare for the changes to red diesel legislation with fuel audits, fuel uplifts and tank cleans

Identify your risks and ensure response preparedness

0800 592 827

adlerandallan.co.uk



Adler & Allan
ENVIRONMENTAL RISK REDUCTION



Niras Group UK Ltd.

Pentlands Science Park, Bush Loan, Penicuik, Nr Edinburgh, EH26 0PL
 Tel: 0131 440 5175 Email: marineUK@niras.com
 Web: www.niras.com/UK

RPS Group.

Elmwood House, 74 Boucher Road, Belfast, BT12 6RZ
 Tel: 02890 667914 Email: mark.mcconnell@rpsgroup.com
 Web: www.rpsgroup.com

CRANE HIRE**Blue Machinery (Scotland) Ltd.**

9 Craigleath Road, Broadleys Business Park, Stirling, FK7 7LQ
 Tel: 01786 469444 Email: sales@bluegroup.co.uk
 Web: www.bluegroup.co.uk

JLW Solutions.

Waulkmill Farm Lodge, Charlestown, Dunfermline, KY12 9JU
 Tel: 01383 872150 Email: m2jlw@aol.com
 Web: jockywilsonblog.wordpress.com/about/

JST Services.

Highfield Business Park, St Quivox, Ayr, KA6 5HQ
 Tel: 01292 262050 Web: www.jstservices.co.uk

Liebherr-Great Britain Ltd.

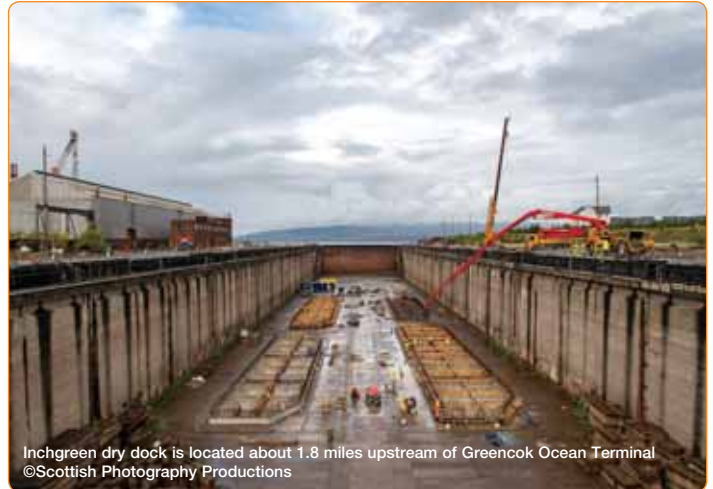
Normandy Lane, Stratton Business Park, Biggleswade, SG18 8QB
 Tel: 01767 602100 Email: info.lgb@liebherr.com
 Web: www.liebherr.co.uk

Molson Green.

Lochil Industrial Park, Deanston, Doune, Stirling, FK16 6AD
 Tel: 01786 841598 Email: info@molsongroup.co.uk
 Web: www.molsongroup.co.uk

CREW/CARGO TRANSFERS**SMS Ltd.**

Easdale, Oban, Argyll, PA34 4RF
 Tel: 01852 300 341
 Email: marineservicesoban@seafari.co.uk



Inchgreen dry dock is located about 1.8 miles upstream of Greencok Ocean Terminal
 ©Scottish Photography Productions

CUSTOM SERVICES**GPL Customs Services.**

GCELL Building, Imperial Park, South Lake Drive, Newport, NP10 8AS
 Tel: 01633 843152 Email: imports@gpl-customs.co.uk
 Web: www.gpl-customs.co.uk

DIVING / MARINE CONTRACTORS**Caldive Ltd.**

18 High Street, Invergordon, IV18 0ET
 Tel: 01349 853688 Fax: 01349 853677 Web: www.caldive.co.uk

Clyde Commercial Diving Ltd.

Rothsay East Dock, Dock Street, Clydebank,
 West Dunbartonshire, G81 1LX
 Tel: 0141 952 1579 Out of Hours: 07956 151654
 Email: billy@clydecommercialdivingltd.com
 Web: www.clydecommercialdivingltd.com

Shearwater Marine Services Ltd.

Unit 19 Highland Ave., Sandbank Business Park, Dunoon, PA23 8PB
 Tel: 01369 705949 Fax: 01369 705925
 Web: www.shearwatermarine.co.uk

DREDGING / MARINE CONTRACTORS**Boskalis Westminster.**

Westminster House, Crompton Way, Fareham, Hants, PO15 5SS
 Tel: 01489 885933 Fax: 01489 578588 Web: www.boskalis.co.uk

ML UK Ltd.

7 Kettering Terrace, Portsmouth, PO2 7QH
 Tel: 02392 819114 Email: info@mluk.co.uk Web: www.mluk.co.uk

Van Oord (UK) Ltd.

Bankside House, Henfield Road, Small Dole, West Sussex, BN5 9XQ
 Tel: 01273 494843 Web: www.vanoord.com

DRONE SERVICES**Edinburgh Drone Company.**

12a Hardgate, Haddington, Edinburgh, EH41 3JW
 Tel: 0772 339 9233
 Email: info@edinburghdronecompany.co.uk
 Web: www.edinburghdronecompany.co.uk

DRY DOCKING / ENGINEERING / SHIPBUILDERS**Dales Marine Services.**

James Watt Dock, Greenock, PA15 2DS
 Tel: 01475 725372 Fax: 01475 725377 Web: www.forth-group.co.uk

Inchgreen Dry Dock.

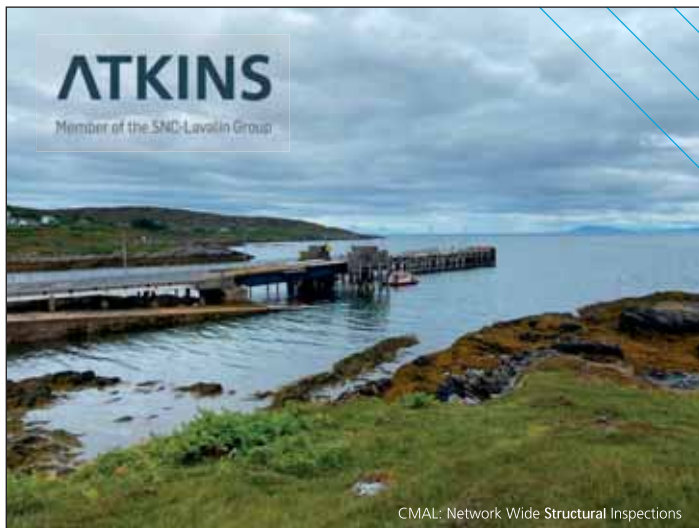
Port Glasgow Road, Greenock, PA15 2NA
 Tel: 0141 221 8733 Email: info@peelports.com
 Web: www.peelports.com

ENGINEERING SERVICES / TOOLS / PRODUCTS**Brammer Buck & Hickman.**

Unit 4 Hareness Circle, Altens Industrial Estate, Aberdeen, AB12 3QY
 Tel: 01224 895272 Email: aberdeen@bbh-rubix.com
 Web: www.uk.rubix.com

ENVIRONMENTAL RISK REDUCTION**Adler and Allan.**

80 Station Parade, Harrogate, HG1 1HQ
 Tel: 0800 592827 Email: leads@adlerandallan.co.uk
 Web: www.adlerandallan.co.uk



CMAL: Network Wide Structural Inspections

Maritime & Ports Engineering

We pride ourselves on being one of the world's leading design, engineering and project management consultancies. Whether it's inspection and analysis of an existing quay wall, or the design of a new port terminal, we have the proven capability to deliver challenging maritime, ports and coastal projects. Our multi-disciplinary in-house expertise means no scheme is too complex or outside our capability.

Working collaboratively as a diverse collection of experts across Atkins, and with leading industry and academic organisations, we deliver the best solutions to our Clients' challenges.

Contact us: paul.timmons@atkinsglobal.com





KGV Dock have a highly trained and qualified team of stevedores
©Scottish Photography Productions



PROFILE SECURITY SERVICES LIMITED

Over 40 years as a
leader in the delivery
of specialist security
solutions to UK Ports



Contact Us

t: 01224 773380 e: enquiries@profilesecurity.co.uk www.profilesecurity.co.uk

Cover every angle. Security solutions to suit your business.

FENDERS

Fendercare Marine.

Enterprise House, Harveys Lane, Seething, Norfolk, NR15 1EN
Tel: 01508 482691 Email: sales@fendercare.com
Web: www.fendercare.com

FERRY SERVICES

Argyll Ferries Ltd.

Ferry Terminal, Gourock, PA19 1QP
Tel: 0800 066 5000
Email: info@argyllferries.co.uk
Web: www.argyllferries.co.uk

CalMac Ferries Ltd.

The Ferry Terminal, Gourock, PA19 1QP
Tel: 0800 066 5000
Email: Enquiries@calmac.co.uk
Web: www.calmac.co.uk

Western Ferries (Clyde) Ltd.

Hunter's Quay, Dunoon, Argyll, PA23 8HJ
Tel: 01369 704452 Email: enquiries@western-ferries.co.uk
Web: www.western-ferries.co.uk

FUELS / LUBRICANTS

A & S International.

The Old Brewery, 2 Brewery Court, High Street, Theale, RG7 5AH
Tel: 0118 930 4321 Email: hello@aands-international.com
Web: aands.international.com

Certas Energy.

Tryst House, Glenbervie Business Park, Larbert, FK5 4RB
Tel: 01324 408044 Fax: 01324 639944
Web: www.certasenergy.co.uk

Highland Fuels.

Rothsay Dock, Clydebank, G81 1YE
Tel: 0800 224224 Web: www.highlandfuels.co.uk

Suppliers of World Leading Port Handling Equipment

Our extensive product portfolio includes
Terex's range of industry leading conveyors.



For more information please visit:
www.blue-group.com



OFFSHORE CONNECTION

24/7 SERVICE BASED IN OBAN
PROVIDING A SAFE AND EFFICIENT
TRANSFER OF PEOPLE AND GOODS AT SEA.

T: 01631 565 833 / M: 07919 615 210
E: info@offshore-connection.co.uk
www.offshore-connection.co.uk

- Crew transfers
- Safety Boat Support
- Pilot boat services
- Port/ship security and standby
- Urgent inter-island courier
- Emergency transfer for any infrastructure repairs (24/7)

HAULAGE / DISTRIBUTION

Collett & Sons.

Baltic House, Central Dock Road, Grangemouth, FK3 8TY
Tel: 08456 255299
Web: www.collett.co.uk

Streamline Shipping Group.

Unit 6, Motorlink, Righead Industrial Estate, Bellshill, ML4 3LA
Tel: 01698 847930
Fax: 01698 847931
Web: www.streamlineshippinggroup.com

West of Scotland Heavy Haulage.

2a Dunnswood Road, Wardpark South, Cumbernauld, G67 3EN
Tel: 01236 807999
Mob: 07900 918676
Email: jimmy@westofscotlandheavyhaulage.com

INDUSTRIAL MARINE LIGHTING

Eco Light Systems.

Caledonia House, Evanton Drive, Glasgow, G46 8JT
Tel: 0141 2708054
Email: simon@ecolightsystems.co.uk
Web: www.ecolightsystems.co.uk

LOAD MONITORING EQUIPMENT

Load Monitoring Systems Ltd.

14 Silverburn Place, Bridge of Don, Aberdeen, AB23 8EG
Tel: 01224 446100 Email: LMS@loadsystems.co.uk
Web: www.loadsystems.co.uk

MARINA SYSTEMS

Inland and Coastal Marina Systems.

Unit 2, 21 Coullardbank Industrial Estate,
Lossiemouth, Moray, IV31 6NG
Tel: 01343 813233 / 815382
Email: sales@inlandandcoastal.com
Web: www.inlandandcoastal.co.uk

MARINE / CARGO SURVEYORS

A. Adamson & Co.

Willow House, New House Business Park, Grangemouth, FK3 8LL
Tel: 01324 665696 Fax: 01324 473579
Web: www.aadamson.co.uk

MARINE CONTRACTING / MARINE & CARGO SURVEYING

Northern Marine Services.

31 Telford Street, Wick, KW1 5EO
Tel: 01955 605440 Mob: 07833 323939 (24hrs)
Email: info@northernmarineservices.co.uk
Web: www.northernmarineservices.co.uk

MARINE INSURANCE

A-Plan Insurance.

2nd Floor, 1 St Swithuns Street, Worcester, WR1 2PY
Tel: 01905 930760
Web: www.aplan.co.uk



T: 0141 941 3366
M: 07979 470 206
keith@offshoreworkboats.co.uk

OFFSHORE WORKBOATS

*Offshore Workboats Ltd is a Scottish based and
long established supplier of Multicats, Workboats,
Safety boats and barges throughout the UK.*



Offshore Workboats Limited
Clyde Boatyard, Dock Street
Clydebank G81 1LX

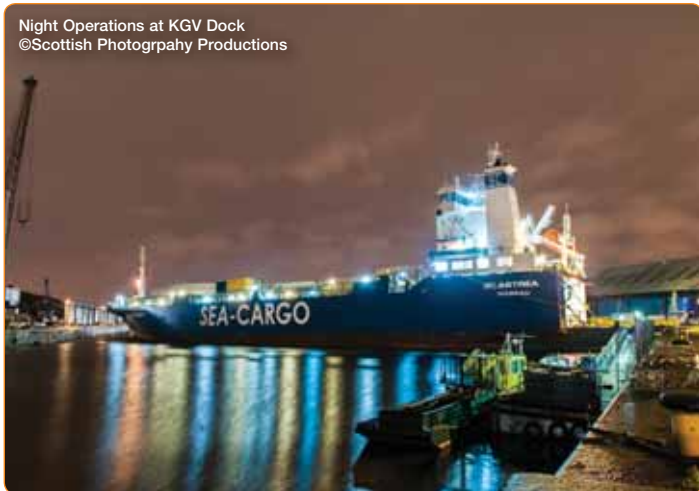
Wind blades for the renewables industry being despatched at KGV
©Scottish Photography Prouctions



Aerial view King George V Dock
©Guthrie Aerial Photography



Night Operations at KGV Dock
©Scottish Photography Productions



MALLAIG BOATYARD LTD.

Harbour Slipways, Mallaig, PH41 4QS
M: 07833 488593 (24/7) | T/F: (01687) 462304
E: Office@mallaigboatyard.co.uk



BOAT BUILDERS & MARINE ENGINEERS • SHIP CHANDLERS

Repairs and installations on all types of craft • Electrical Repairs
Slipping vessel up to 90ft & 200 tonnes • Welding/ Fabrication
Hydraulics • Diesel Service • Main agents: Baudouin Marine Engines

MARINE AND OFFSHORE ENGINEERING

Draeger Marine & Offshore.

2 Tern Place, Denmore Ind. Estate,
Bridge of Don, Aberdeen, AB23 8JX
Tel: 01224 701569 Email: aberdeensales.uk@draeger.com
Web: www.draeger.com/marine-offshore-uk

MARINE SUPPLIES / MARINE AND PORT SERVICES

Forth Logistics and Marine Services.

Merlin House, 5 Cross Way, Dalgety Bay, Fife, KY11 9JE
Tel: 01383 829829 Email: office@forthlogistics.com
Web: www.forthlogistics.com

MARINE TRAINING / OPERATIONS PLANNING

Marketec.

Unit 5, 50 Cotton Street, Aberdeen, AB1 5EE
Tel: 01224 574758 Email: bruce@marketec.co.uk
Web: www.marketec.co.uk

MARITIME AND COASTGUARD AGENCY

Glasgow Marine Office.

1st Floor Westpoint One, 1 Marchfield Drive, Paisley, PA3 2RB
Tel: 0141 887 6430 Fax: 0141 842 1258
Email: glasgow_mo@mcga.gov.uk Web: www.mcga.gov.uk

MISSION TO SEAFARERS SCOTLAND

Providing support for all seafarers
24-hour Emergency Tel: 01506 842629
(Referral service may be in operation)
Email: timothy.tunley.mts@gmail.com
Web: www.missiontoseafarers.org

NAVIGATIONAL AIDS

Navmoor Ltd.

UKSE Innovation Centre, Festival Drive, Ebbw Vale, Gwent, NP23 8XA
Tel: 02922 638222 Mob: 07393 441562
Email: info@navmoor.com Web: www.navmoor.com

Coastworks

workboats, tugs & barges



8 Allanton Park Terrace
Fairlie, Ayrshire KA29 0AW
T: +44 (0) 1475 568 572
F: +44 (0) 1475 568 153



Our fleet of workboats, pontoons, spudleg, flattop crane and excavator barges are available for charter to the dredging, marine construction, harbour maintenance and renewable energy industries throughout the UK and Europe.



E: info@coastworks.co.uk / www.coastworks.co.uk





Aerial view of the Greenock Cruise Berth
©Neil Clayton - commercialdronefootage.com



KGV Dock is located on a vast site with 32.6 hectares of outside storage
©Scottish Photography Productions

PONTOON HIRE

Workfloat.

Lamanva House, Lamanva, Penryn, Cornwall, TR10 9BJ
Tel: 07815 118756 Email: toby@workfloat.co.uk
Web: www.workfloat.co.uk

ScaffFloat.

Southwest Shipyard, Ponsharden,
Penryn, Falmouth, Cornwall, TR11 2SE
Tel: 01326 702260 Email: sales@scafffloat.co.uk
www.scafffloat.co.uk

PORT SECURITY

Profile Security Services Ltd.

Suite 3, Buchanan Tower, Buchanan Business Park,
Stepps, Glasgow, G33 6HZ
Tel: 0141 779 9275 Email: enquiries@profilesecurity.co.uk
Web: www.profilesecurity.co.uk

PROJECT MANAGEMENT / CONTRACT MANAGEMENT

Leapmoor LLP.

Municipal Buildings, Suite 3, 122 Shire Street, Gourock, PA19 1QZ
Tel: 01475 648778 Mob: 07803 260145
Email: gary@leapmoor.co.uk
Web: www.leapmoor.co.uk

R.N.L.I.

Helensburgh Lifeboat Station.

Rhu Marina, Gareloch Road, Rhu, Helensburgh, G84 8LH
Tel: 01436 820438 Email: helensburgh@rnli.org.uk Web: www.rnli.org

Largs Lifeboat Station.

Greenock Road, North Promenade, Largs, KA30 8PQ
Tel: 01475 675149 Email: largs@rnli.org.uk Web: www.rnli.org

SHIPS AGENTS / FREIGHT FORWARDERS

ALS UK International Limited.

1501 Hedon Road, Kingston Upon Hull, HU9 5NX
Tel: 01482 796214 Email: info@als-europe.com
Web: www.abnormal-loads.com

Alfa Shipping Services Ltd.

Rothesay Dock (West), Cart Street, Glasgow, G81 1QB
Tel: 0141 390 6883 Mob: 07904 813318
Email: info@alfashipping.co.uk Web: www.alfashipping.co.uk

Armitt Group.

26-30 South Road, Weston Point, Runcorn, Cheshire, WA7 4EZ
Tel: 01928 575926 Email: enquiries@armitt.co.uk
Web: www.armitt.co.uk

Collett & Sons Ltd.

Baltic House, Central Dock Road, Grangemouth, FK3 8TY
Tel: 08456 255299
Web: www.collett.co.uk

Cory Brothers Shipping Agency Ltd.

19 Grangemouth Enterprise Centre, Grangemouth, FK3 8XS
Tel: 01324 473382 Fax: 01324 474883
Web: www.cory.co.uk

Denholm Wilhelmsen Ltd.

First Floor, Epoch House, Falkirk Road, Grangemouth, FK3 8WW
Tel: 01324 482201 Email: enquiries@denholm-wilhelmsen.com
Web: www.denholm-barwil.com

GAC Shipping (UK) Ltd.

Gateway Business Park, Beancross Road, Grangemouth, FK3 8WX
Tel: 01324 482811 Fax: 0207 0679138 Web: www.gac.com

Graypen Limited.

Earls Court, Earls Gate Business Park,
3 Roseland Hall, Grangemouth, FK3 8ZE
Tel: 01324 665333
Email: scotland@graypen.com/scotland@gp-shipping.com
Web: www.graypen.com

Streamline Shipping Group.

7 Hornock Road, Gartsherrie Ind. Estate,
Coatbridge, Glasgow, ML5 2QA
Tel: 01698 847930 Email: getaquote@streamlineshippinggroup.com
Web: www.streamlineshippinggroup.com



Cable Layer Giulio Verne under escort at KGV
©Scottish Photography Productions

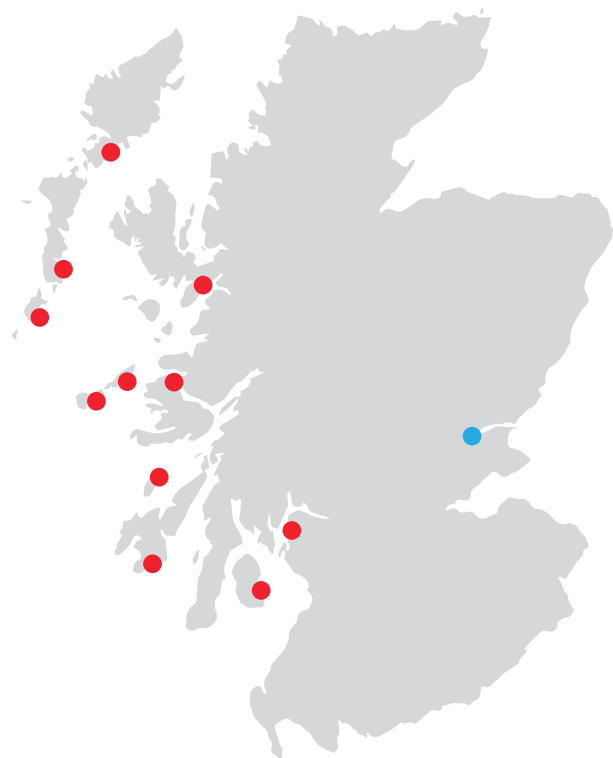


Heavy lift operations on KGV Dock
©Scottish Photography Productions



David MacBrayne Ltd is the UK's largest ferry operator running 29 routes to over 50 destinations, across 200 miles of Scotland's west coast. With a fleet of 33 vessels completing approximately 160,000 sailings a year, their impressive operation places them alongside the largest transport operators in Scotland.

As well as their multi-award winning ferry operations, David MacBrayne Ltd is also a ship management specialist providing essential lifeline services and logistical support to island and remote communities, therefore playing a critical role in enabling economic growth.



- David MacBrayne Cruise Destination
- Perth Harbour; Operated by David MacBrayne



In addition to this, they operate 27 commercial ports with delegated authority at 17 statutory harbours, and have applied their expertise to the commercial market, managing a variety of cargos.

One such port is Perth Harbour, on Scotland's east coast, and together with the local authority, Perth & Kinross Council, they have planned for substantial growth over the next five years.

CalMac ports are strategically situated to serve both leisure and commercial customers, including cruises:

- Timber, Aggregates, Feed, Project Cargos
- 11 Scottish Cruise Destinations
- Offshore Renewables
- Fishing

calmac.co.uk/harbours
perthharbour.co.uk

E: harbour.operations@calmac.co.uk
perth.harbour@calmac.co.uk
T: 01738 624 056





Alfa Shipping Services Ltd

19/5 Kirn Street
Glasgow G20 0DD
United Kingdom

T: 0044 (0)7904 813318 | M: 07904 813318 (24 hrs)

T/F: 0044 (0)141 390 6883 | E: info@alfashipping.co.uk | Skype: alfaship 1



Over 40 years' experience in the shipping business encompassing Ship's Agency, Shipbroking, Cargo Superintendence & Pre-Shipments Inspections.

With port offices in Clydebank and Inverkeithing we provide coverage for all Scottish ports. We are designated agents for Clydebank Port Services who operate an independent port facility on the Clyde.

www.alfashipping.co.uk



Tugboat Coastworker undertaking work at the new cruise ship berth
©Scottish Photography Productions

Inverlussa Marine Services.

By Craignure, Isle of Mull, Argyll, PA65 6BD

Tel: 01680 812109 Mob: 07990 595909

Email: info@inverlussa.com

Web: www.inverlussa.com

GSS Marine Services.

Silverhills, Rosneath, Argyll, G84 0RW

Tel: 01436 821277 Email: info@gssplant.co.uk

Web: www.gssplant.co.uk

Mirren Marine Ltd.

3 Annetyard Drive, Skelmorlie, PA17 5BN

Tel: 07515 834178 Email: mirrenmarine@gmail.com

Web: www.mirrenmarine.com

Offshore Workboats.

Clyde River Boatyard, Rothesay Dock East,

Dock Street, Clydebank, G81 1LX

Tel: 0141 941 3366 Mob: 07979 470206

Email: keith@offshoreworkboats.co.uk

Web: www.offshoreworkboats.co.uk

SHIP BUILDERS

Damen Shipyards.

P.O. Box 1, 4200 AA, Gorinchem, The Netherlands

Tel: +31 (0)183 63 99 11 Email: info@damen.com

Web: www.damen.com

Ferguson Marine.

Newark Works, Castle Road, Port Glasgow, PA14 5NG

Tel: 01475 742300 Email: enquiries@fergusonmarine.com

Web: www.fergusonmarine.com

SOLICITORS

Brodies LLP.

2 Blythswood Square, Glasgow, G2 4AD

Tel: 0141 248 4672 Fax: 0141 221 9270 Web: www.brodies.co.uk

STEVEDORING

JLW Solutions.

Waulkmill Farm Lodge, Charlestown, Dunfermline, KY12 9JU

Tel: 01383 872150 Email: m2jlw@aol.com

Web: jockywilsonblog.wordpress.com/about/

TIMBER, CRANAGE – HAULAGE

Creel Consulting Ltd.

Balmacraan, Drumnadrochit, Loch Ness, Inverness, IV63 6UY

Tel: 07867 497836 Email: neil@creel.co.uk Web: www.creel.co.uk

TOWAGE / MARINE SERVICES

Clyde Marine Services Ltd.

Victoria Harbour, Greenock, PA15 1HW

Tel: 01475 721281 Fax: 01475 888023

Web: www.clyde-marine.co.uk

Svitzer Marine Ltd.

Greenock Ocean Terminal, Patrick Street, Greenock, PA16 8UU

Tel: 0845 608 1353 (24hrs) Tel: 01642 258 361

Email: gbgrk.operations@svitzer.com Web: www.svitzer.com

WORKBOATS

Coastworks Operations Ltd.

8 Allanton Park Terrace, Fairlie, Largs, KA29 0AW

Tel: 01475 568572 Fax: 01475 568153

Email: info@coastworks.co.uk Web: www.coastworks.co.uk



**Agricultural industry | Shipping industry
Landfill and recycling | Marine works
Dock-handling / port operator | Stevedoring**



For more of what we do visit:

jlwsolutionsltd.com

MULTI TOOL, MULTI SERVICE, EVERY JOB

T: 01383 873048 | E: admin@jlwsolutionsltd.com



Advertisers Index

A. Adamson & Co	84	George Brown & Sons	73
A.S.A.P. Supplies Ltd	155	Girvan Harbour	30
Aberdeen Compass Adjusting Ltd	145, 277	Glenalmond Timber Co Ltd	107
Aberdeenshire Council	172	Global Energy Group	197, 211, 213, 218, 220, 222, 224, 225, 227, 229
ABPmer	143	GPL Customs Services	85
Adler and Allan Ltd	19, 128	Graham Construction	71
AECOM	19, 75, 129, 215	Graypen Limited / GP Shipping Limited	85
Affric Limited	273	Great Glen Shipping Company Ltd	244
Alfa Shipping Services Ltd	26	Greenhowe Marine Services	132
All-Energy 2022	314	Highland Council	255
A-Plan Insurance	97, 287	Highland Fuels	121, 188, 265, 270, 297
Arbroath Harbour (Angus Council)	112	Highland Industrial Supplies Ltd	195
Arch Henderson LLP	136	Holy Loch Port	42
Argyll & Bute Council	44, 49	IDI Services Ltd	209
Armitt Group	249	Inland and Coastal Marina Systems Ltd	167
Aspect Land & Hydrographic Surveys Ltd	Inside Front Cover	Inverlussa Marine Services	11, 307
Aspect Land & Hydrographic Surveys Ltd	60, 147, 296	Invest in Perth	110
Associated British Ports	32	J D Wood (UK) Ltd	216
Atkins Ltd	20, 48	James Hutton Ltd	129, 171
Blue Machinery (Scotland) Ltd	21, 93, 141, 297, Inside Back Cover	JLW Solutions Ltd	26, 53, 89
Boskalis Westminster Ltd	154	JST Services (Scotland) Ltd	37, 46, 142, 253
Brammer Buck & Hickman	122	Kingdom Security	215
British Ports Association	310	Kishorn Port Ltd	260
Bubble & Goose	219	Leapmoor LLP	207, 281
Buccaneer Ltd	176	Leask Marine	279, 280
Caldive Ltd	217	Lerwick Port Authority	288
CalMac Harbours	56	Liebherr – GB Ltd	31
Calport Ltd	106	Linnhe Shipping & Trading Co Ltd	55
Clarksons Port Services Ltd	139	Macduff Ship Design Ltd	141
Clydebank Port Services	27	Macduff Shipyards Ltd	175
Coast Renewable Services Ltd	100	Mackay Boatbuilders (Arbroath) Ltd	113
Coastal Connection	22, 55	Mackay Marine Services Ltd	134
Coastworks Operations Ltd	23, 30, 90, 130, 203	Mackinnons Solicitors	137
Collett & Sons Ltd	81	Mallaig Boatyard Ltd	23, 248
Comhairle nan Eilean Siar	266	Mallaig Harbour Authority	247
Corilla Marine	140, 278	Maritime Journal	242
Craigie Engineering Ltd	286	Maritime Progress Ltd	11
Creel Consulting Ltd	41	McLaughlin & Harvey Ltd	133
David MacBrayne	25	Mechanicoat Limited	194, 270
DEME Group Ltd	62	Metec Group	15, 75, 209
Draeger Marine & Offshore	124, 206	Mission to Seafarers	35, 72, 80, 146, 286, 309
DuroWipers	137, 155	ML UK Ltd	91
Ecosse Marine Ltd	10, 87, 127, 207	Molson Green	2
Edinburgh Drone Company	87	Montrose Port Authority	114
Euronete	161, 165, 291	Moray Council	185
Eyemouth Harbour Trust	102	Moray First Marine Ltd	179
Eyemouth Marine Ltd	103	Mott MacDonald	116
Fairlie Quay	38	Navmoor Ltd	Outside Back Cover
Ferguson Transport & Shipping	54, 241, 243, 248, 252, 258	Niras Group (UK) Ltd	153
Forth Bridge Stevedoring Ltd	101	NorSea Group (UK) Ltd	151
Forth Logistics Marine Services	63	North East Scotland Stevedoring Ltd	180
Forth Ports	66	Northerly Marine Services	233, 285
Fraserburgh Harbour Commissioners	162	Northern Lighthouse Board	50
Gael Force Group	245	NorthLink Ferries Ltd	131





SHEARWATER MARINE SERVICES



Innovative and Cost Effective Marine Engineering Solutions



**Ships Husbandry
Services**



**Topside & Underwater Marine
Civil Engineering Support**



**Underwater Welding
Repairs**



Survey & Inspection



**Cathodic Protection
Design & Installation**



Advertisers Index (cont.)

Northwards Ltd.	1
Ocean Kinetics Ltd.	293
Offshore Workboats.	22, 54
Oilfast Ltd.	9
Orkney Islands Council.	274
PBP Services.	166
Peelports Clydeport.	12, 13
Perth Harbour.	108
Peterhead Port Authority.	148
Petroineos.	82
Port Babcock Rosyth.	58
Port of Berwick.	104
Port of Cromarty Firth.	204
Port of Inverness.	190
Poseidon Navigation Services Ltd.	138
Profile Security Services Ltd.	21, 91, 140, 208
PSG Marine & Logistics Ltd.	200
Rix Shipping (Scotland) Ltd.	119
RPS Group.	157
Savoch Hire Ltd.	150, 170
Scarborough Borough Council (SBC Dredging Services)	90
Scotlog Sales Ltd.	194
Scottish Photography Productions.	105
Scrabster Harbour Trust.	236
Sea-Cargo Ltd.	126
Seawork 2022 International.	132, 187
Shearwater Marine Services Ltd.	316
Shetland Islands Council.	298, 303
Simpson Ltd.	195, 213, 232, 235
Skipper Expo International 2022.	159, 164, 177, 295
SMS Ltd (Specialised Marine Support Ltd)	4
Southbay Civil Engineering Ltd.	95
Stoddart Crane Hire.	193
Stornoway Port Authority.	269
Stornoway Shipping Services Ltd.	271
Survival Systems International UK Ltd.	118
T. Barbour Ltd.	51
Tarbert Harbour Authority.	43
Targe Towing Ltd.	79, 99, 119, 147, 161
The Seafarers' Charity.	99, 294
The Smart Ports Alliance.	95, 211
Tobermory Harbour Authority.	256
Tom Morrow Tarpaulins Ltd.	199
Troon Tug Co Ltd.	36
Ullapool Harbour Trust.	262
UK Harbour Masters' Association.	312
W. Knight Watson & Co. Ltd.	83
West of Scotland Haulage.	17, 111
Whittaker Engineering Limited.	120
Whyte Cargo Handlers Ltd.	70, 117, 144, 156, 169
Wick Harbour Authority.	230
William B Bruce Ltd.	171
WorkFloat and ScaffFloat.	7

+44 (0) 1369 70 5949 shearwatermarine.co.uk

commercial@shearwatermarine.co.uk



Suppliers of World Leading Port Handling Equipment

Our extensive product portfolio includes the world renowned Terex Fuchs Brand of Material Handlers.



For more information please visit:
www.blue-group.com

blue
SCOTLAND



navmoor
AIDS TO NAVIGATION

We supply, Install & Maintain Aids To Navigation

Buoys

Polyethylene & Steel
IALA Compliant
Navigation Buoys.
Elastomer &
Polyethylene
Mooring Buoys.

Wave and Meteorological

Wave
Met Hydro
Turbidity
Aquaculture
Including telemetry
back to Navmoor's
very own Portal.

Lanterns

Solar
Leading Lights,
Lighthouses,
Sectored Lights,
Obstruction and
Explosion Proof.

Telemetry

AIS, GSM,
SATCOM, Radio
Link and Internet
of Things (IOT) –
Fully integrated
asset monitoring
and control.

Moorings

Marine Grade
Chain, Shackles,
Swivels, Concrete
& Cast Iron Sinkers.

Structures

Daymarks,
Lattice Towers,
Tilting Columns
and Top Marks.

**We offer supply, installation & maintenance of all of
the above, as well as IALA compliance
recommendations, and surveys.**

Let us steer you in the right direction

info@navmoor.com
+44(0)2922 638222

navmoor.com

