

# Ports of Scotland

## Yearbook

2021



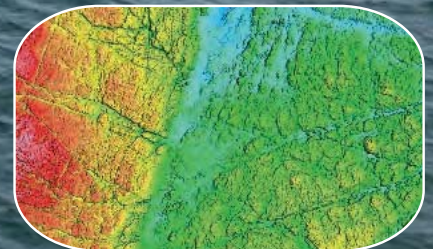
40TH EDITION

SCOTLAND'S LEADING COASTAL HYDROGRAPHIC SURVEY COMPANY



...our expertise  
your advantage

- High Resolution Multibeam Bathymetric Surveys [IHO S44 Standard]
- Geophysical Surveys - Data Acquisition, Interpretation & Reporting
- Side-Scan Sonar & Magnetometer / UXO Surveys - Analysis & Reporting
- Geotechnical Surveys (Vibrocore & Grab Samples) - Analysis & Reporting
- High Resolution Dock Wall & Marine Structure - 3D Point Cloud Surveys
- Offshore Wind, Wave & Tidal Renewable Energy Site Surveys
- UAV Aerial Imagery / LiDAR / Asset Inspection & Condition Surveys



WEB: [www.aspectsurveys.com](http://www.aspectsurveys.com)

TEL: + 44 (0) 1294 313 399

EMAIL: [mail@aspectsurveys.com](mailto:mail@aspectsurveys.com)

# NORTHWARDS

WAY AHEAD

**Providing the right solutions for our customers' transport needs**



## **The established, high-quality freight, haulage and maintenance operator in the Northern Isles.**

- Freight shipping, cargo handling, road haulage and distribution
- Direct connections into Scandinavia and Europe
- Next day pallet deliveries collections throughout the UK
- Daily overnight service between all depots
- HGV workshop services
- Temperature controlled transportation
- Livestock movement
- Ships agents

### **Contact our depots:**

Shetland  
01595 694452

Orkney  
01856 873030

Aberdeen  
01224 213215

Scrabster  
01847 892052

Inverness  
01463 233299

Glasgow  
01236 728108

**[info@northwardsltd.co.uk](mailto:info@northwardsltd.co.uk)**  
**[northwardsltd.co.uk](http://northwardsltd.co.uk)**

**Shetland | Northwards Ltd**  
Anderson Base, Gremista, Lerwick ZE1 0PX



# BULK MATERIAL HANDLING SPECIALISTS



CONVEYORS | BULK LOADERS

WHEELED LOADERS

PARTS | SERVICE

13 UK SERVICE DEPOTS



TEREX FINLAY | TELESTACK



OFFERING THE FULL RANGE FROM HYUNDAI



OVER £6m OF STOCK | OVER 75 ENGINEERS



3 STRATEGICALLY POSITIONED IN SCOTLAND

**MOLSON**  
Green

[molsongroup.co.uk/green](http://molsongroup.co.uk/green)

Molson Group Ltd, Lochill Industrial Estate, Doune, Stirling FK16 6AD

FOR MORE INFORMATION  
**01179 820 123**

[info@molsongroup.co.uk](mailto:info@molsongroup.co.uk)



# Ports of Scotland<sup>©</sup>

## Serving Industry & Commerce

Ports of Scotland<sup>©</sup> is owned and published by Maritime Publications Ltd.

Tel: 01877 330519

Email: [info@portsofscotland.co.uk](mailto:info@portsofscotland.co.uk)

Web: [www.portsofscotland.co.uk](http://www.portsofscotland.co.uk)

Find us on  

Cover photograph  
Aerial view of Greenock  
©Neil Clayton - commercialdronefootage.com

**Price £30.00**

**Section 4**  
**Highlands & Islands**  
**Pages 184-309**

**Section 3**  
**North East**  
**Pages 118-183**

**Section 1**  
**South West**  
**Pages 4-55**

**Section 2**  
**South East**  
**Pages 56-117**

**Section 5**  
**Information & Features**  
**Pages 310-321**

Whilst every care has been taken to ensure the accuracy of the information in this publication Maritime Publications Ltd, (trading as Ports of Scotland) it's shareholders, directors, employees or anyone acting on their behalf do not accept responsibility for any errors, omissions, misrepresentation or misinterpretation. Port users are recommended to verify with the respective Port and Harbour Authorities that the information given in this publication is correct and remains valid for the time of and intended use. Information in the advertisements should be verified with the advertisers. No part of the publication may be reproduced in any form or by any electronic or mechanical means including information storage and retrieval systems without the written permission of the publishers.

© 2020/21 Maritime Publications Ltd. All rights reserved.

Aberdeen.....	121
Arbroath.....	108
Ardishaig.....	39
Ardrossan.....	18
Ardeenish.....	263
Ayr.....	30
Banff.....	173
Berwick upon Tweed.....	100
Braefoot.....	77
Buckie.....	177
Burghead.....	182
Burntisland.....	74
Cairnryan.....	26
CalMac Harbours.....	54
Campbeltown.....	42
Clydebank.....	25
Corpach.....	239
Cromarty Firth.....	197
Cullen.....	180
Cullivoe.....	302
Dundee.....	90
Dunoon.....	45
Eyemouth.....	98
Fairlie.....	36
Findochty.....	182
Fraserburgh.....	158
Gairloch.....	248
Girvan.....	28
Glasgow.....	14
Gourdon.....	174
Grangemouth.....	78
Greenock.....	8
Helmsdale.....	250
Holy Loch.....	40
Hopeman.....	180
Hound Point.....	77
Hunterston.....	16
Invergordon.....	197
Inverkeithing.....	97
Inverness.....	187
Johnshaven.....	174
Kallin.....	263
Kinlochbervie.....	247
Kirkcaldy.....	76
Kirkwall.....	274
Kishorn.....	255
Kyle of Lochalsh.....	249
Leith.....	70
Lerwick.....	288
Leverburgh.....	263
Lochinver.....	246
Lochmaddy.....	263
Loch Ryan.....	27
Lossiemouth.....	175
Lyness.....	282
Macduff.....	169
Mallaig.....	242
Miavaig.....	263
Methil.....	75
Montrose.....	111
Nigg.....	217
Oban.....	46
Perth.....	103
Peterhead.....	145
Portknockie.....	180
Portree.....	251
Portsoy.....	174
Rosehearty.....	173
Rosyth.....	61
Rothsay.....	45
Scalloway.....	300
Scapa Flow.....	278
Scrabster.....	230
Stonehaven.....	175
Stornoway.....	264
Stromness.....	284
Sullom Voe.....	304
Tarbert.....	41
Tobermory.....	252
Troon.....	33
Uig.....	250
Ullapool.....	258
Whitehills.....	182
Wick.....	226





# SMS LTD

**Vessel Charter and Logistical Support**

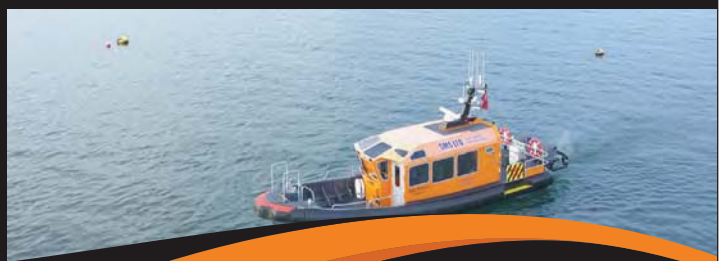
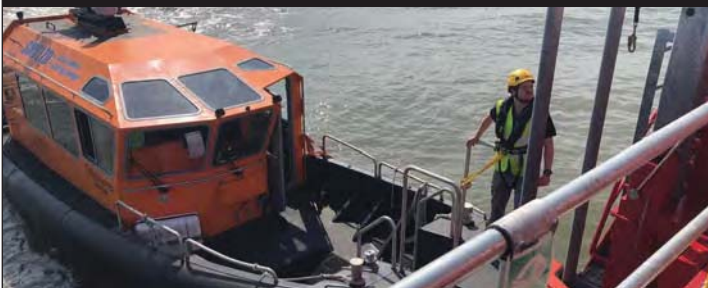
Tel: +44 (0)1852 300589

info@specialisedmarinesupport.com

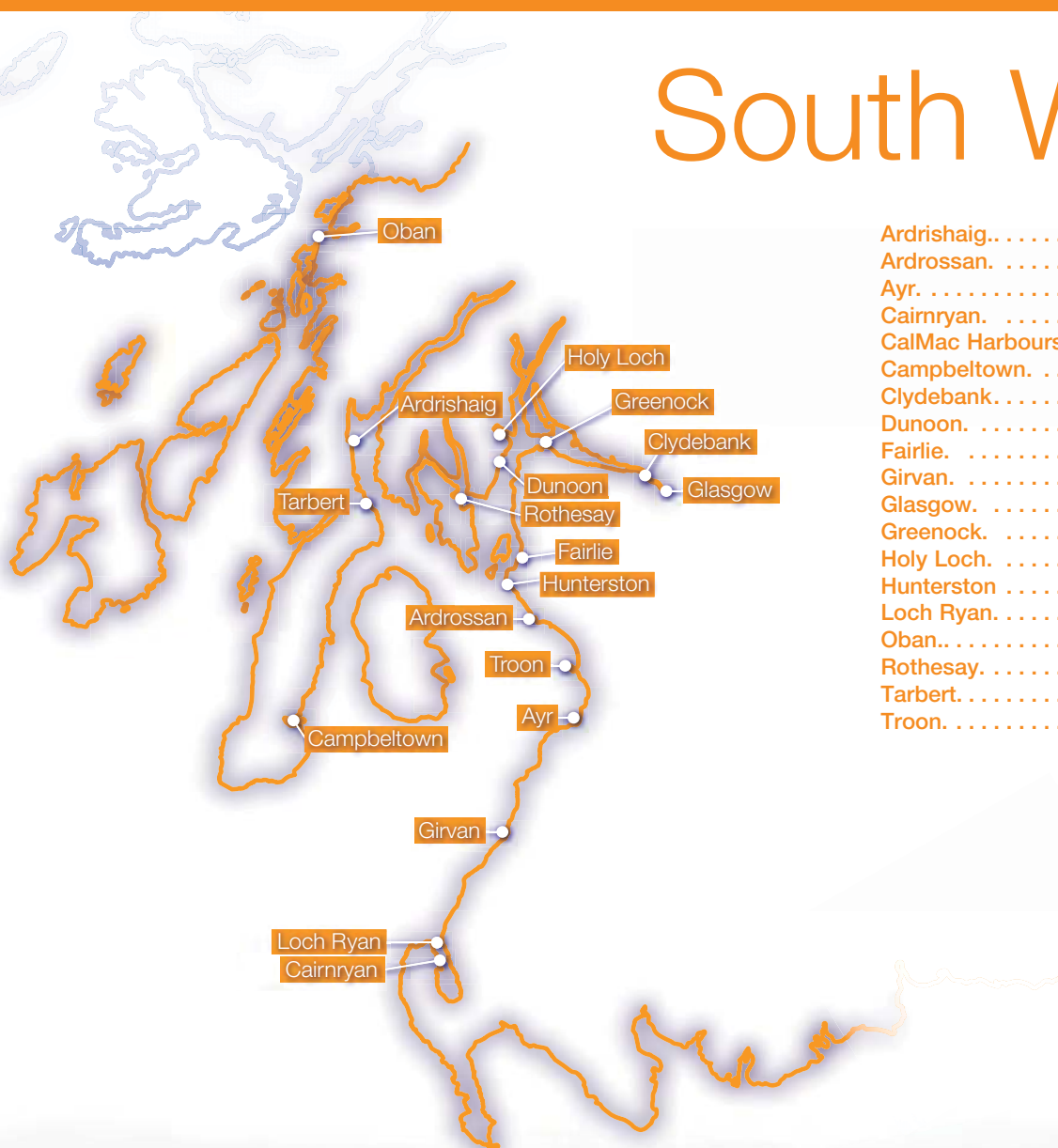
www.specialisedmarinesupport.com

Specialised Marine Support Ltd (SMS) is an ISO 9001:2008 accredited company based in Scotland providing support vessels to the offshore renewables and offshore construction industries throughout Europe. All vessels are road transportable.

Personnel Transfers | Equipment Transfers | Windfarm Support  
Cable Support | Guard/Safety Vessel | Survey Support



# South West



Ardishaig..	39
Ardrossan. ....	18
Ayr. ....	30
Cairnryan. ....	26
CalMac Harbours .....	54
Campbeltown. ....	42
Clydebank. ....	25
Dunoon. ....	45
Fairlie. ....	36
Girvan. ....	28
Glasgow. ....	14
Greenock. ....	8
Holy Loch. ....	40
Hunterston .....	16
Loch Ryan. ....	27
Oban..	46
Rothesay. ....	45
Tarbert. ....	41
Troon. ....	33



# Clydeport

PORT AUTHORITY  
Clydeport Operations Ltd.  
16 Robertson Street  
Glasgow  
G2 8DS  
Tel:  
Email:  
Web:

0141 221 8733  
info@peelports.com  
www.peelports.com

Enquiries and quotes regarding the port facilities and services should be addressed to: Marketing Department at the above address.

## PRINCIPAL OFFICIALS

Port Director - Clydeport:	Jim McSporran
Tel:	0141 241 8502
Property Manager:	Craig Donald
Tel:	0141 241 8503
Senior Manager Marine Operations:	Charlie Simcox
Tel:	01475 886320
Sales Manager:	Elaine Bennett
Tel:	0141 445 7405
Mobile:	07836 331715
Terminal Manager – Glasgow:	Colin Bankier
Tel:	0141 445 2241
Operations Manager – Glasgow:	Callum McMahon
Tel:	0141 445 2241
Business Unit Manager – Greenock & Dublin:	Craig Collins
Tel:	0147 588 6327
Operations Manager – Greenock:	Hugh Hardie
Tel:	01475 726171
Hunterston:	
Port Director – Clydeport:	Jim McSporran
Tel:	0141 241 8502
Ardrossan:	
Port Director – Clydeport:	Jim McSporran
Tel:	0141 241 8502



Clydeport is part of the vast network of Peel Ports Group  
©Guthrie Aerial Photography

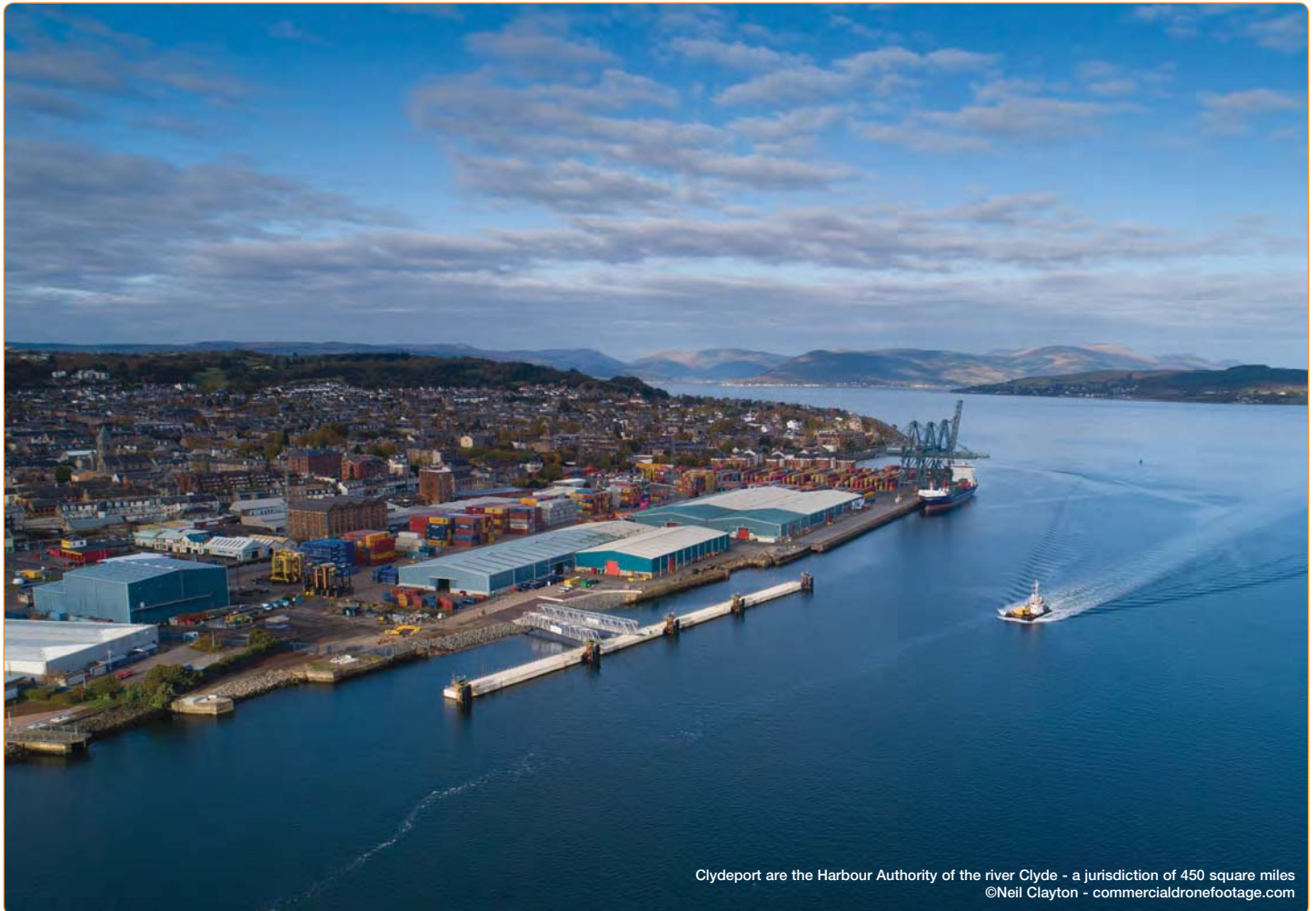


## About Peel Ports Clydeport: Scotland's gateway to the world

Clydeport is part of the vast network of Peel Ports Group, one of the largest port operators in the United Kingdom.

No matter which one of our locations you visit, you'll find that we're more than just a provider of first-class facilities and services; we also offer customers an integrated transport solution within an interconnected network of strategically situated ports.

Our world-class facilities and excellent locations mean that we're able to serve a variety of different businesses, connecting Scotland to the rest of the world. Whether you're looking for the deepest sea entrance in Northern Europe or the busiest cruise terminal in Scotland, Clydeport is home to some of the biggest, deepest, busiest and most advanced facilities in Europe. Clydeport's main terminals are King George V Dock Glasgow, Greenock Ocean Terminal, Hunterston and Ardrossan. But it's not just our locations



Clydeport are the Harbour Authority of the river Clyde - a jurisdiction of 450 square miles  
©Neil Clayton - commercialdronefootage.com



that set us apart, we're also the Harbour Authority of the river Clyde and its Estuary, managing a jurisdiction of 450 square miles. This stretches from the Albert Bridge in Glasgow to a line drawn between Corrygills Point on the Isle of Arran and Gailies on the Ayrshire Coast, including the sea lochs which branch off the inner firth.

### Responsibilities and Operations

Within the jurisdiction area, the company's main business is the provision of port facilities and services, with property investment and development activities a substantial and growing contributor to both revenue and profit. Clydeport is also responsible for the navigable channel, lighting, buoyage and the provision of harbour facilities for shipping and commerce.

Clydeport handles key commodities such as containers, forest products, steel, Agri bulks, project and bulk cargoes. We also operate one of Scotland's busiest cruise terminals and can offer a wide-range of port-centric and specialist development properties as well as customer logistic solutions.

Whether you represent a small organisation or a large blue chip company, Peel Ports believes in building long-lasting partnerships that will help you to grow and improve your supply chain.

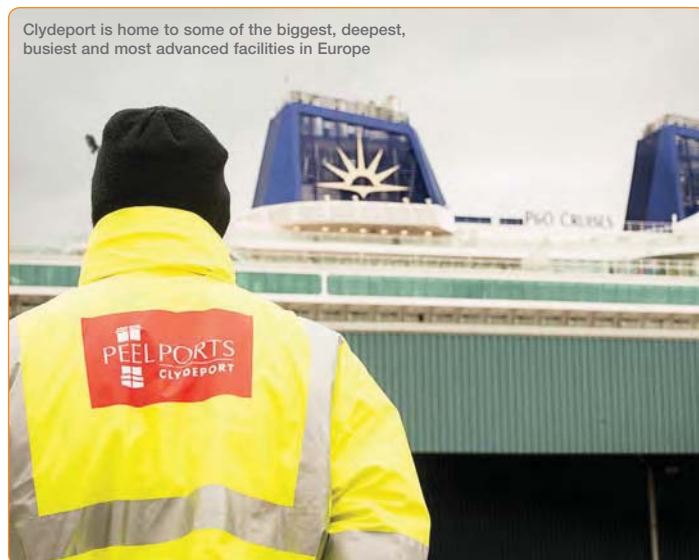
### History of Clydeport

Greenock, a town 20 miles downstream of Glasgow, developed port facilities during the 17th century. The small port enjoyed modest success thanks to the herring trade and sugar imports until loss of trade led it to be reconstituted by the Greenock Harbour Trust in 1888.

Eventually, in 1966, the Greenock Harbour Trust, The Clyde Lighthouses Trust and the Clyde Navigation Trust merged to become the Clyde Port Authority. Peel Ports acquired the Clyde Port Authority in 2003, the Authority comprised the ports of Greenock, King George V Dock (KGV), Hunterston and Ardrossan.

Clydeport today benefits from being part of the Peel Ports Group and is the largest port operator on Scotland's west coast. It boasts world-class facilities as well as first class service at each of its ports locations.

Clydeport is home to some of the biggest, deepest, busiest and most advanced facilities in Europe



SOUTH WEST

### Ports

Clydeport's success is due to continued investment in its facilities, its range of added value services and scope provided by being part of one of the largest port groups in the United Kingdom. Clydeport's principal harbour facilities include King George V Dock in Govan, Greenock Ocean Terminal, Hunterston and Ardrossan.

Other facilities include Inchgreen, Finnart Oil Terminal and Rothesay Dock. Its ports provide a wide range of functions, including deep water berthage and facilities for handling all main categories of shipping and cargoes, which are fundamental to the success of many Scottish businesses across a broad range of industries.

The strategic terminals form an integral part of the economic infrastructure of the west of Scotland by providing a gateway to the rest of the UK, Ireland, European and US markets.

# VolkerBrooks

VolkerBrooks is a specialist provider of road transportable marine plant and equipment. Our services include the manufacture, hire and sale of:

- Modular pontoons
- Modular ferries and barges
- Work platforms
- Spacer frames
- Ro-Ro pontoons
- Gangways and small boat landings
- Anchor systems
- Winches
- Workboats, tugs and safety boats

Available worldwide and manufactured in the UK.

T: +44 (0)1524 599 400

E: [enquiries@volkerbrooks.co.uk](mailto:enquiries@volkerbrooks.co.uk)

W: [www.volkerbrooks.co.uk](http://www.volkerbrooks.co.uk)



# Greenock



## PORT AUTHORITY

Clydeport Operations Ltd.  
Greenock Ocean Terminal  
Patrick Street  
Greenock  
PA16 8UU  
Tel:  
Email:

01475 726171  
info@peelports.com

## PRINCIPAL OFFICIALS

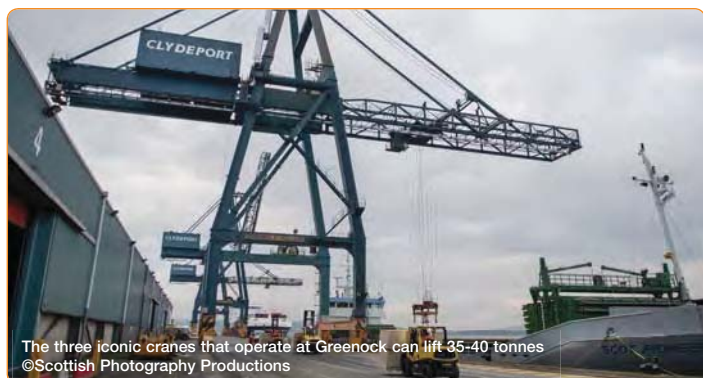
Business Unit Manager – Greenock: Craig Collins  
Terminal Manager – Greenock: Hugh Hardie

Location: Latitude 55° 57'N  
Longitude 04° 44'W

### Greenock: Home to Scotland's deepest container terminal

Our facilities at Greenock are situated in a highly accessible location with immediate access to a local population of over 2 million people. Excellent links to Glasgow and the central belt, a railway station, two nearby airports and motorway access via the A8/M8 ensure that Greenock is ideally placed as a local transit hub. We also have regular feeder services from Le Havre, Bilbao, Antwerp, Southampton, Belfast and Liverpool.

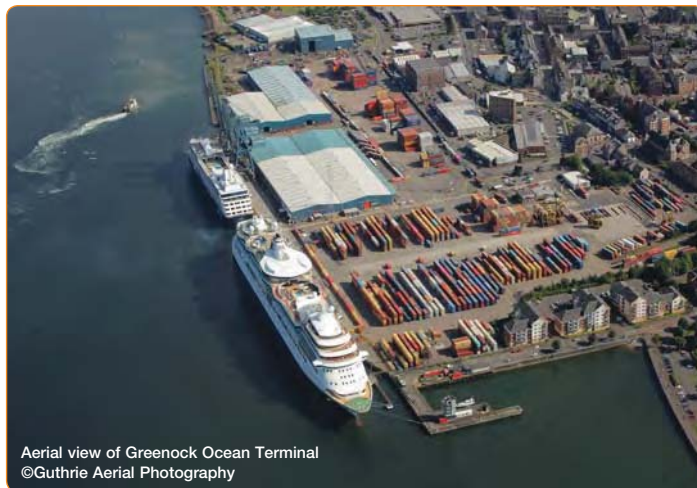
However, it's about much more than connectivity. Take our container offer at Greenock for example. An extensive 372 metre quay length and 12.6 metre CD allows vessels to be accommodated alongside with ease and simplicity. Three iconic cranes which now form an integral part of the Greenock skyline can lift between 35-40 tonnes with an outreach of 13 containers across.



The three iconic cranes that operate at Greenock can lift 35-40 tonnes  
©Scottish Photography Productions

We're not short on storage areas either; Greenock Ocean Terminal is within a 16-hectare site and has an additional benefit of a 25,000m<sup>2</sup> covered storage, a bonded multi-user warehouse, TEU capacity of 7,000, 116 reefer points, M&R of containers and reefers on site, container weighing facilities approved by the MCA, OOG handling on request, devanning/loading (securing) of containers and cargo storage facilities.

The terminal handles a wide-range of palletised materials, steel, building products, forest products, including pulp and paper reels. These are all stored in our quayside warehouses to ease unloading and access to cargo.



Aerial view of Greenock Ocean Terminal  
©Guthrie Aerial Photography

### New dedicated cruise berth

Greenock is also home to the dedicated Greenock Cruise berth. This facility has allowed the port to grow into one of Scotland's busiest cruise terminals. The new £12m cruise berth is able to take vessels up to 345m long.

Sheltered deep-water anchorage is also available in the river and also at Loch Striven for the use of large vessels to lay-up.

## Port Facilities:

### ANCHORAGES

There are extensive deep and sheltered anchorages at Tail of the Bank, off Greenock and elsewhere in the Firth of Clyde.  
Contact Estuary Radio on 0151 949 6651.

### BERTHS

372m of Quay with 12.6m CD.

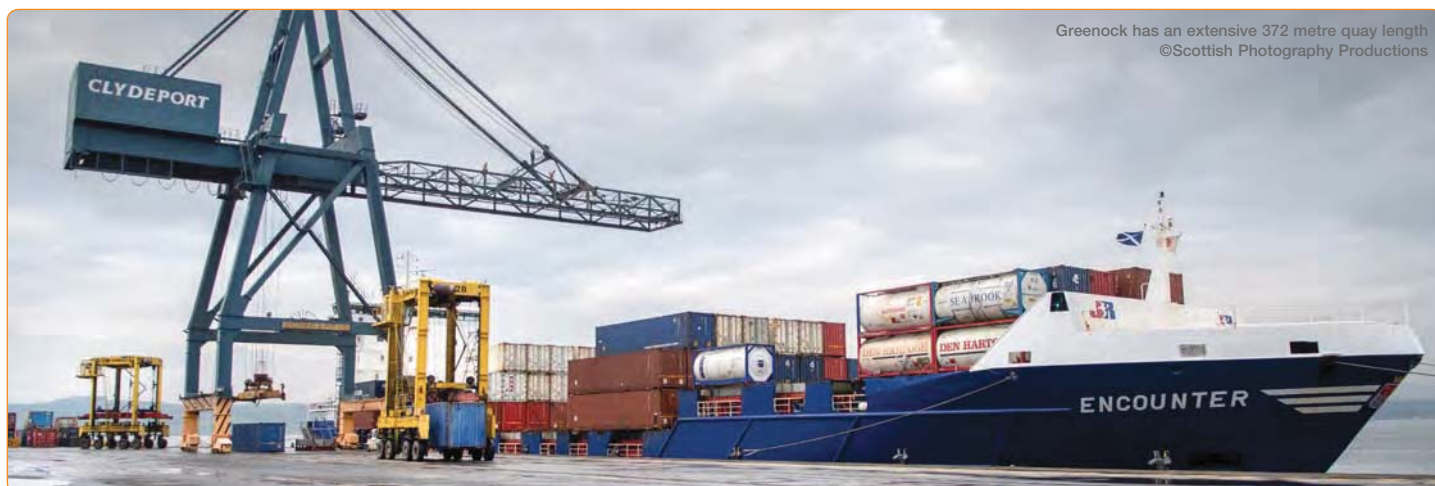
### CARGO HANDLING / PLANT

Numerous cranes available including:

- 2 Shore-side container cranes 35t (32m reach across).
- 1 Shore-side container crane 40t (32m reach across).
- 11 Straddle carriers.
- MAFI & Tugmaster units.
- 2 Empty container stackers.
- Large selection of forklifts ranging from 1t to 14t.

### CRUISE SHIPS

Cruise ships have space to manoeuvre off the terminal and come alongside at any state of the tide. Quayside space for 60 coaches, which allows up to 3,500 passengers to quickly embark or disembark. Porterage and baggage handling facilities for embarking and disembarking passengers. Secure parking facilities on site for passenger's cars whilst on a cruise. Port is open 24/7 with tight security.



Greenock has an extensive 372 metre quay length  
©Scottish Photography Productions





**OILFAST**  
Fuelling Scotland

# SCOTLAND'S LEADING SUPPLIER IN THE MARINE INDUSTRY

With Depots across the country, we offer a national supply of Marine Gas Oil and other fuels to both storage tanks and direct to vessels. We offer a bespoke, tailored delivery service at great prices.

For more information or to place an order, call Dianne Graham on:  
tel: **0800 233 5100**

email: [dianne.graham@oilfast.co.uk](mailto:dianne.graham@oilfast.co.uk)

**OILFAST**  
Fuelling Scotland

**Dianne Graham**  
Marine Account Manager  
m. 07702 559 653  
e. [dianne.graham@oilfast.co.uk](mailto:dianne.graham@oilfast.co.uk)

[www.oilfast.co.uk](http://www.oilfast.co.uk)

Unit 12b  
Dalcross Ind. Estate  
Inverness IV2 7XB  
t. 0800 233 5100



**Q8 Oils**  
Authorised Distributor

**FUCHS**

**ROCK OIL**



[www.oilfast.co.uk](http://www.oilfast.co.uk)

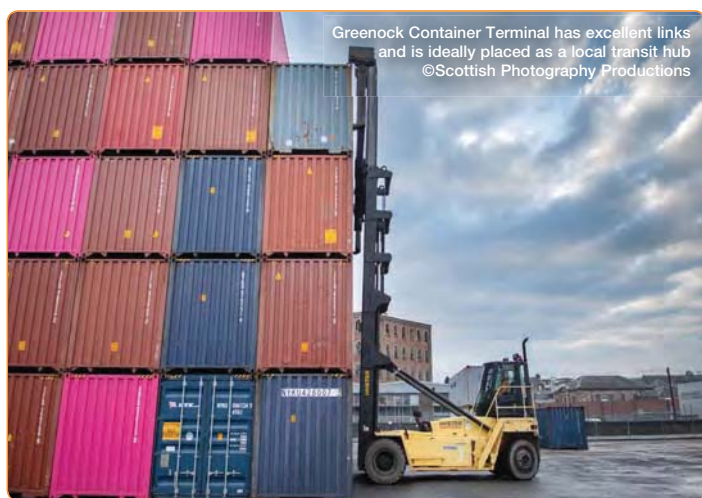


# ECOSSE MARINE

**Fresh & Frozen Provisions,  
Cabin, Deck & Engine consumables,  
Bonded stores and logistics. Direct to vessel service**

**Solutions delivered above & below the waves!**

**+44 (0)1324 624492**  
**supply@ecossemarine.com**



Greenock Container Terminal has excellent links  
and is ideally placed as a local transit hub  
©Scottish Photography Productions



Tugboat Coastworker undertaking  
work at the new cruise ship berth  
©Scottish Photography Productions



Turbine Installation Vehicle MPI Adventure on lay-by at Inchgreen Greenock  
©Scottish Photography Productions

## ELECTRIC POWER

By arrangement.

## FEEDER SERVICE

Feeder services connect with deep-sea services in Southampton, Liverpool, Belfast, Bilbao, Le Havre, Antwerp, Dublin and Portugal.

## FRESH WATER

Supplies available at all berths.

## OPERATING HOURS

Routine receipt and delivery of goods Mon – Fri, 0800 – 1700 hours, or as required.

Container receivables Mon – Thurs 24-hours, Fri, 0700 – 1900 hours, weekends on request.

Berthing and working 24-hours, as required.

## PILOTAGE

Clydeport is responsible for all pilotage in the river and estuary. Pilotage is compulsory. See Pilotage Directions, NTM No 2.

## SECURITY

Approved by TRANSEC.

## SPECIFICATIONS

Main Quay length	372m.
Maintenance depth	12.6m.
Tidal range	3m.
Water line	25 tph.

Dedicated floating cruise berth

Quay length	200m, suitable to take vessels up to 345m
Maintenance depth	9.5m.

Tugboats, anchoring and tendering on request.

Contact port office for further details.

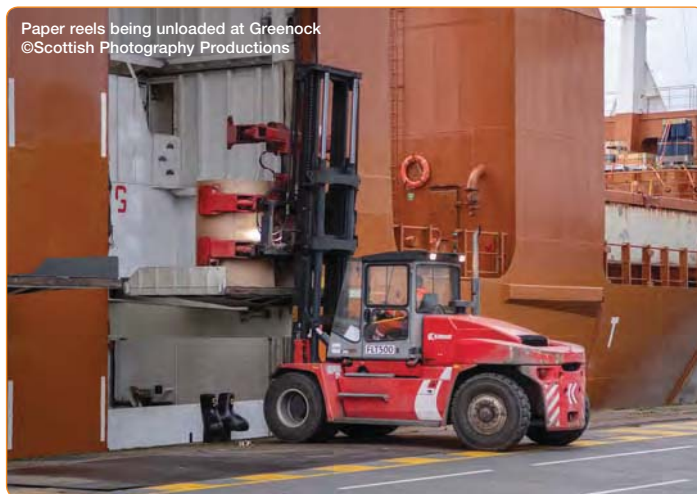
## STEVEDORING

All stevedoring at Greenock is arranged by Clydeport Operations Ltd.

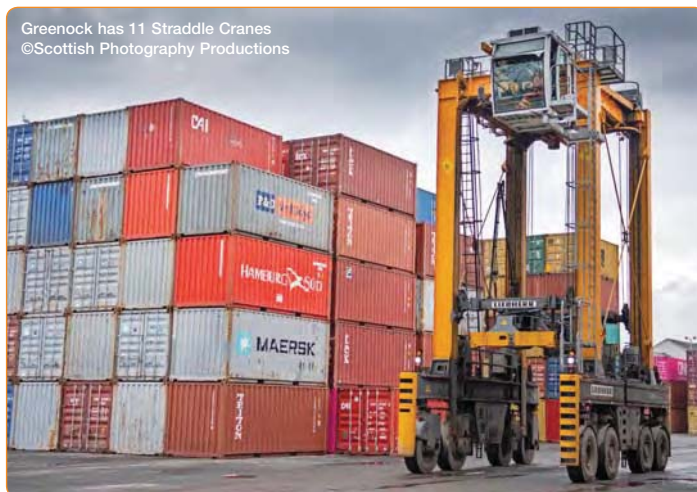
## STORAGE

Total area 20.3 ha.

Total covered modern warehousing 25,000 m<sup>2</sup>.

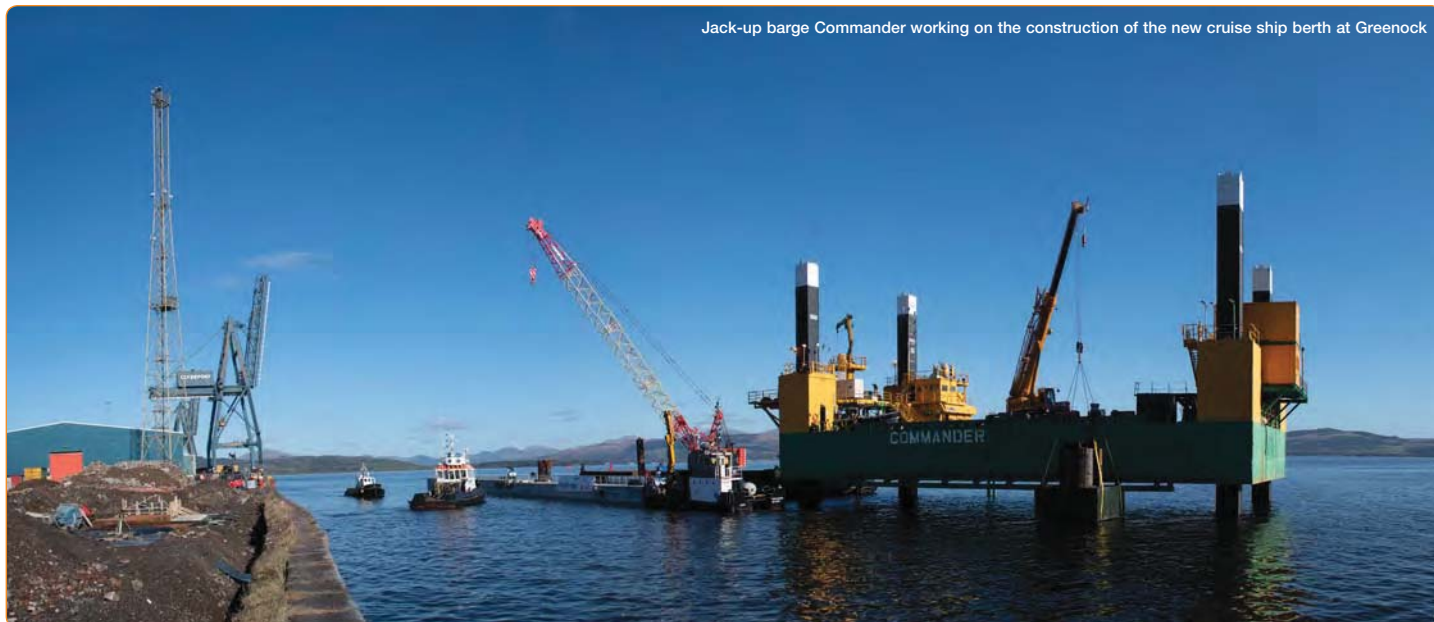


Paper reels being unloaded at Greenock  
©Scottish Photography Productions



Greenock has 11 Straddle Cranes  
©Scottish Photography Productions





#### TOWAGE

Tugs are available from:

##### **Svitzer Marine Ltd.**

Greenock Ocean Terminal, Patrick Street, Greenock, PA16 8UU

Tel: 0845 608 1353

Email: [gbgrk.operations@svitzer.com](mailto:gbgrk.operations@svitzer.com)

Web: [www.svitzer.com](http://www.svitzer.com)

##### **Clyde Marine Services Ltd.**

Victoria Harbour, Greenock, PA15 1HW

Tel: 01475 721281

Fax: 01475 888023

Web: [www.clyde-marine.co.uk](http://www.clyde-marine.co.uk)

#### TRANSPORT LINKS

Greenock Ocean Terminal has excellent transport links to Glasgow and the central belt with immediate access to the motorway network via the A8/M8. It is approximately 23 miles and a 30 minute drive from Glasgow city centre. Greenock has a railway station which is on the Inverclyde Line with frequent services to Glasgow Central.

Glasgow, Edinburgh and Prestwick International airports are also within easy reach.

#### VHF RADIO COMMUNICATION

All movements are monitored from Estuary Radio on VHF channel 12.

## Maritime Progress is well known for its fast supply of IMO/Marine related signage

**But do you know we also offer...**

- Bespoke large format printed items
- Aluminium signs for interior or exterior
- Rigid white PVC
- Window cling stickers
- Vinyl banners
- Frosted window vinyl
- Port safety signage
- Way-finding photo-luminescent signage
- Floor vinyl and Carpet graphics
- Printed magnets
- CNC cut to shape signage

**www.maritimeprogress.com** Call: **01737 763400**

# Hunterston

**A place with blue-green economy at its heart**

## Overview

**Hunterston PARC's vision brings together energy intensive industries with low cost, on-site power and heat generation, offering a unique opportunity to develop innovative, self-sustaining and cost-effective operations.**

### Features

- Over 320-Acres of available space
- Plot sizes can accommodate up to 4,000,000 sq ft
- On-site rail connectivity / passenger within 0.7 miles
- On-site deep water port and dry-dock
- Significant grid connections (Western Link High Voltage Direct Current)
- On-site water abstraction and discharge
- Proximity to Glasgow & Prestwick Airport
- Favourable planning status
- Significant support from UK and Scottish Government

## Vision

Our vision is to create a nationally significant Energy and Marine campus. Bringing together leading industry operators, world class universities and the latest innovators to deliver technological advances in areas such as power generation and aquaculture.

Hunterston Port and Resource Centre (PARC) strengths lie in its location with its deep water port, on-site rail connectivity, national grid connections and sheer size, which allows for a broad range of options for occupation.

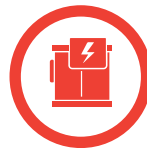
### Over 320 Acres of Available Space for:

- Land leasing
- Build to specification and lease
- Long leasehold sales
- Build to sell
- Build to own and operate

## Significant Development Opportunities

Hunterston PARC offers you the unrivalled combination of space, facilities and connectivity for Scottish industry with energy at its heart. It offers infrastructure that enables efficient logistics and is ideally suited to:

- Support development of new technologies
- Develop and integrate international and UK research and development activity on site
- Develop skills and training facilities including parallel research programmes with Strathclyde University
- Support links with wider Ayrshire skills, productivity and innovation programmes
- Build a leading international centre for advanced technology,
- SMART systems and energy management



**Energy & Power Generation**



**Offshore Manufacture**



**Recycling of Energy Assets**



**Vessel Inspection and Repair**



**Warehousing & Office Space**



**Aquaculture**



**For further information contact:** Elaine Bennett

Sales Manager, Clydeport | **T:** +44(0)141 445 7405 | **M:** +44(0)783 633 1715 | **E:** [Elaine.Bennett@peelports.com](mailto:Elaine.Bennett@peelports.com)



# Inchgreen

## A first class multi-modal port located on the firth of Clyde

Inchgreen offers a wide-range of development opportunities and has been identified in the National Renewables Infrastructure Plan (NRIP) as a potential offshore renewables site.

The 31 acre site includes one of Scotland's largest dry dock facilities, a repair quay (also known as load out berth) and extensive land suitable for development.

The repair quay is 390m long, with a minimum water depth of 7.5m, capable of increasing to a dredged depth of 9.0m. The dry dock is multi-purpose and there is also a small barge berth at the east end of the repair quay.

**The site offers infrastructure that enables efficient logistics and is ideally suited to:**

- Decommissioning
- Vessel mobilisation
- Project cargo
- Supporting the offshore sector
- Port related activities
- Marine construction or ship repair
- The site also boasts immediate links to Peel Ports purpose built container facilities at Greenock Ocean Terminal, two miles West.

## Key opportunities

**Operational dry dock, berthing quay and adjoining land with road and sea access**

One of Scotland's largest dry docks,  
**305m long x 45m wide**

**Repair quay, 390m long**, with a minimum water depth of **7.5m**, capable of increasing to a dredged depth of **9m**

**Berthage and direct access to the deep water channel** in the Firth of Clyde

Existing warehouse space **27,000 sq ft of space available for use**

Facilities suitable for a variety of uses in addition to established uses of ship repairing marine construction

**Flexible lease terms**

**Local engineering and waste handling services and expertise**

Proximity to **scrap flows for recycling and onward sale**

**Availability of lay up areas nearby at Loch Striven and Firth of Clyde anchorages**

## Site location

Inchgreen is located on the south bank of the River Clyde about 1.8 miles upstream of Greenock Ocean Terminal. It offers a berthing quay at the east end of the repair quay and adjoining land with road and sea access. It comprises of storage and working areas.

## Connectivity

### Road

A8, M8, A78, M77, M74, M73

### Rail

Local rail access connecting to Glasgow

### Air

Glasgow International (15 miles),  
Glasgow Prestwick (39 miles)

### Water

Direct access to deep-water channel  
in Firth of Clyde



**For further information contact:** Elaine Bennett

Sales Manager, Clydeport | **T:** +44(0)141 445 7405 | **M:** +44(0)783 633 1715 | **E:** Elaine.Bennett@peelports.com

# Glasgow



PORT AUTHORITY  
Clydeport Operations Ltd.  
King George V Dock  
Govan  
Glasgow  
G51 4SD

Tel: 0141 445 2241  
Email: info@peelports.com

## PRINCIPAL OFFICIAL

Terminal Manager: Colin Bankier  
Operations Manager: Callum McMahon

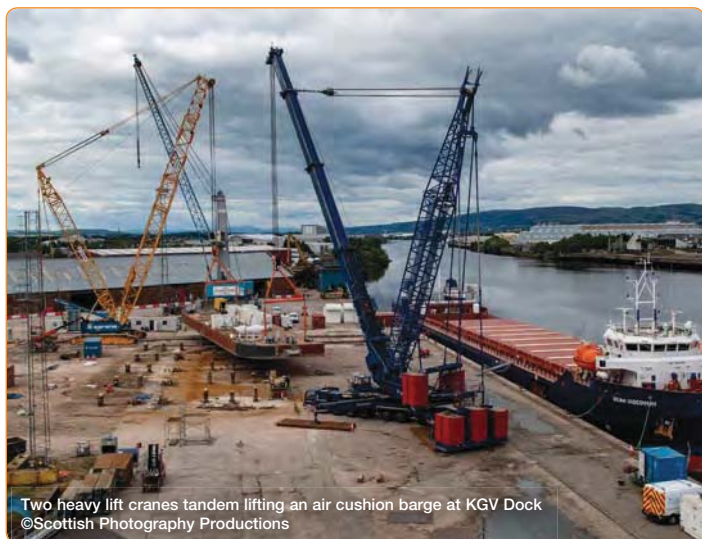
Sales Manager: Elaine Bennett  
Tel: 0141 445 7405  
Mob: 07836 331715

Location: Latitude 55° 52'N  
Longitude 04° 17'W

## King George V Dock: The city-centric gateway to Scotland

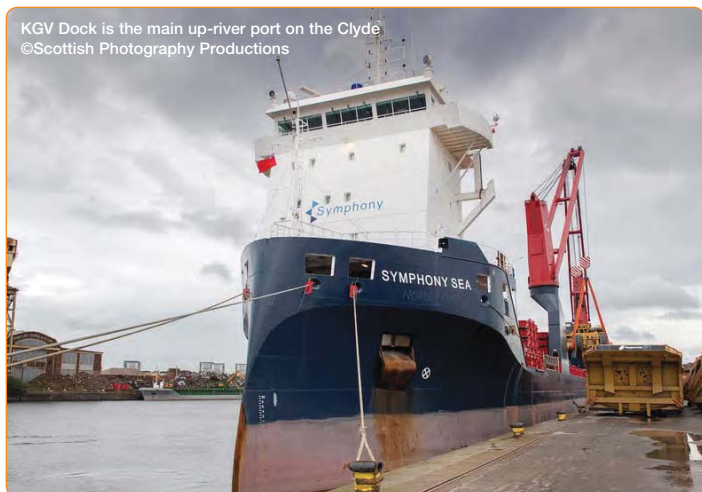
Resting on the banks of the Clyde and just ten minutes away from the bustling city centre of Glasgow. King George V Dock (KGV) is the main up-river port serving the region. Centrally located, the terminal sits on the doorstep of Scotland's extensive rail and motorway network, allowing for fast and easy distribution of cargo.

The dock, which opened in July of 1931, is located on a vast site with 32.6 hectares of outside storage and 60,000m<sup>2</sup> of sheltered storage space. King George V Dock also boasts a 1,586m long quay including a 529m long riverside quay with a water depth of 8.5m.



Two heavy lift cranes tandem lifting an air cushion barge at KGV Dock  
©Scottish Photography Productions

The vast storage space, quay and water depth is complemented by state-of-the-art equipment including recent investments such as two Gottwald heavy lift bulk cranes and the purchase of a new multi-docker crane. KGV is able to handle agri-bulks, dry bulks, forest products, renewables, metals and project cargo commodities.



KGV Dock is the main up-river port on the Clyde  
©Scottish Photography Productions



KGV can cater for all types of heavy lift operations  
©Scottish Photography Productions

## Port Facilities:

### ANCHORAGES

Vessels waiting to make the passage up-river to Glasgow may be advised to lie at Tail of the Bank, a large sheltered anchorage off Greenock, or elsewhere in the Firth of Clyde.

### BERTHS

Total quay length of 1,586m with 8.5m CD.

### BUNKERING

Fuel, diesel/gas oil can be provided at all berths by barge or road tanker.

### CRANE HIRE / PLANT

Several cranes available including:

- 2 Gottwald HMK 260 EG harbour mobiles (100 tonnes at 19m radius).
- 1 multi-docker CH65C material handler – capable of lifting up to 400 tonnes per hour.
- Several wheeled shovels (Volvo 150E).
- Various forklift trucks with up to 21 tonne capacity.
- Tugmaster and Mafi trailers.

### ELECTRIC POWER

By Arrangement.

### FRESH WATER

Supplies available at all berths.

### MAXIMUM SIZE OF VESSELS

Ships drawing up to 9.4m in fresh water can make the river passage to or from Glasgow.

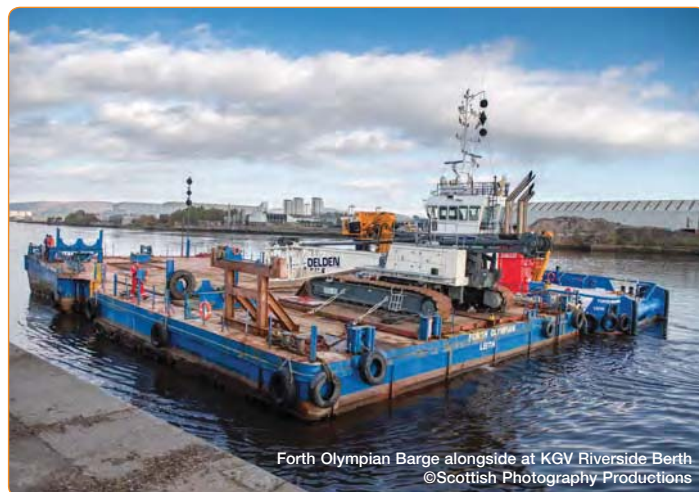
### MEAN TIDAL RANGE

Spring 4m.

Neaps 2.4m.

LOA 225m.

Beam of 32m.



Forth Olympian Barge alongside at KGV Riverside Berth  
©Scottish Photography Productions



## PILOTAGE

Clydeport as CHA, is responsible for all pilotage in the River and Estuary. Pilotage is compulsory. See Pilotage Directions, NTM No. 2. Contact Estuary Radio on 0151 949 6651.

## SECURITY

KGV Dock has a PFSP approved by TRANSEC.

## STEVEDORING / PORTERAGE

All stevedoring within Glasgow is arranged by Clydeport Operations Ltd.

## STORAGE

Total area 32.6 hectares, covered storage is 60,000m<sup>2</sup>.

## TOWAGE

Tugs are available from:

### Svitzer Marine Ltd.

Greenock Ocean Terminal, Patrick Street, Greenock, PA16 8UU

Tel: 0845 608 1353

Email: gbgrk.operations@svitzer.com Web: www.svitzer.com

### Clyde Marine Services Ltd.

Victoria Harbour, Greenock, PA15 1HW

Tel: 01475 721281 Fax: 01475 888023

Email: enquiries@clyde-marine.co.uk Web: www.clyde-marine.co.uk

## VHF RADIO COMMUNICATION

All movements are monitored from Estuary Radio on VHF channel 12.

## WASTE DISPOSAL

Where dedicated skips are required for large quantities of garbage, 24-hours' notice must be given to Clydeport.



Clarksons  
Port Services

## Providing port services to the marine and energy industries since 1970

Available 24/7/365 to support clients with the highest standards in:

- Port Agency • Freight Forwarding •
- Project Logistics •
- Voyage Agency Services •
- Crew Change Co-ordination •
- Bunkering • Gibb Group •

King George V Dock, Glasgow

[Clyde@clarksons.com](mailto:Clyde@clarksons.com)

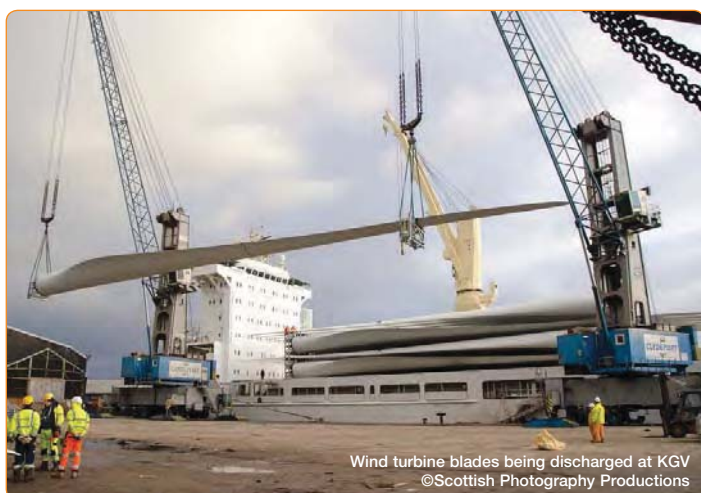
Tel: +44 (0) 1383 428 768



KGV has 32.6 hectares of external storage  
©Scottish Photography Productions



KGV Dock offers full service cargo handling  
©Scottish Photography Productions



Wind turbine blades being discharged at KGV  
©Scottish Photography Productions



KGV Dock's location allows for fast and easy distribution of all cargo  
©Scottish Photography Productions

# Hunterston PARC



PORT AUTHORITY  
Clydeport Operations Ltd.  
Hunterston  
FAIRLIE  
Ayrshire  
KA29 0AZ  
Email:

info@peelports.com

PRINCIPAL OFFICIAL  
Port Director – Clydeport:  
Tel:

Jim McSparran  
0141 241 8502

Location:

Latitude 55° 45' N  
Longitude 004° 52.5' W

Hunterston Port and Resource Centre (PARC) is a nationally significant industrial and multi-modal port located just 40 minutes from Glasgow. It is the only single site in the UK that offers a deep-water port, 300 acres of brownfield site and onward transport links by road and rail.

It offers infrastructure that enables efficient logistics and is an ideal location for:

- New energy intensive industry
- New power generation
- Manufacture and service of assets for the offshore wind sector
- Onshore recycling of assets from the energy sector
- Inspection repair and maintenance of high value vessels

Hunterston PARC's vision is to bring together energy intensive industries with low cost, on-site power and heat generation, offering a unique opportunity to develop innovative, self-sustaining and cost-effective operations.

The historical industrial site has the potential to transform Scotland's prospects in a variety of key economic sectors, import and export opportunities for decades to come.

## Port Facilities:

### BERTHS

Inner Berth – Length 300m, DWT 95,000, Draft 19.8m  
Outer Berth – Length 443m, DWT 350,000, Draft 23m

### SEA ENTRANCE

26m channel depth  
2m under keep clearance  
3m tidal range

### CRANAGE

By arrangement.

### BUNKERING

From road tanker or ship/bunker barge.

### ELECTRIC POWER

By arrangement.

### FRESH WATER

Yes.

### MAXIMUM SIZE OF VESSELS

N/A

### MEAN TIDAL RANGE

Spring	3.4-0.4 = 3.0m
Neaps	2.7-1.0 = 1.7m



Hunterston Parc is a multi-modal port located just 40 minutes from Glasgow  
©Guthrie Aerial Photography



Hunterston has one of the deepest sea entrance channels in Northern Europe  
©Guthrie Aerial Photography

### PILOTAGE

Clydeport is responsible for all pilotage in the river and estuary. Pilotage is compulsory. See Pilotage Directions, NTM No 2. Contact Estuary Radio on 0151 949 6651.

### SECURITY

Approved by TRANSEC.

### STEVEDORING / PORTERAGE

All stevedoring within Hunterston is arranged by Clydeport Operations Ltd.

### TOWAGE

Tugs are available from:

#### Svitzer Marine Ltd.

Greenock Ocean Terminal, Patrick Street, Greenock, PA16 8UU  
Tel: 0845 608 1353  
Email: gbgrk.operations@svitzer.com  
Web: www.svitzer.com

#### Clyde Marine Services Ltd.

Victoria Harbour, Greenock, PA15 1HW  
Tel: 01475 721281 Fax: 01475 888023  
Email: enquiries@clyde-marine.co.uk  
Web: www.clyde-marine.co.uk

### VHF RADIO COMMUNICATION

All movements are monitored from Port Control Radio on VHF channel 12.

### WASTE DISPOSAL

Where dedicated skips are required for large quantities of garbage, 24-hours' notice must be given to Clydeport.



# West of Scotland Heavy Haulage

West of Scotland Heavy Haulage are an established heavy haulage company specialising in all types of transport in the UK and Eire. From initial enquiry our team of professional and experienced staff will find the best solution to meet your needs from suitable vehicles to route planning, site surveys, permits and escorts - everything to ensure fast efficient trouble-free movements.



## Simply the West

West of Scotland Heavy Haulage  
2a Dunnswood Road, Wardpark South  
Cumbernauld, Glasgow G67 3EN

contact: Jimmy Campbell  
t: 01236 807999 m: 07900 918676  
e: [jimmy@westofscotlandheavyhaulage.com](mailto:jimmy@westofscotlandheavyhaulage.com)



# Ardrossan



## PORT AUTHORITY

Clydeport Operations Ltd.

Ardrossan

KA22 8DB

Email: info@peelports.com

## PRINCIPAL OFFICIAL

Port Director – Clydeport:

Jim McSporran

Tel: 0141 241 8502

Senior Manager Marine Operations:

Charlie Simcox

Tel: 01475 886320

Location:

Latitude 55° 38'N

Longitude 04° 49'W

Ardrossan is located on the north Ayrshire coast and enjoys excellent transport links by land, sea and air. It is situated on the A78 which runs the length of the scenic Ayrshire coast and has several radial A roads for Glasgow which is approximately 30 miles away. Ardrossan Harbour is used by commercial, ferry and leisure craft.

As Clydeport's main centre for ferry traffic to Isle of Arran, approximately 800,000 passengers use the Ardrossan-Brodick crossing each year. From May a summer ferry service takes passengers and vehicles across the Firth of Clyde from Ardrossan to Campbeltown. The service runs throughout the summer and details are available at [www.calmac.co.uk](http://www.calmac.co.uk).

The harbour is in the process of regeneration with a £50 million development plan. The project will see acres of derelict land surrounding the harbour redeveloped to become a prime site for further commercial and leisure use.

The inner harbour is a popular marina complex currently accommodating 250 berths, whilst the outer harbour comprises 2 roll-on/roll-off berths and a quayside berth for vessels up to 100 metres LOA.

## Eglinton Dock and Tidal Basin

Covering an area of 39,000m<sup>2</sup> the dock and adjoining tidal basin have roll on/roll off berths and there is a neighbouring railway station for passenger traffic.

Large parking areas are provided for vehicles and trailer traffic awaiting shipment.



M.V. Isle of Arran Roll On/Roll Off car and passenger ferry

## Port Facilities:

### ANCHORAGES

Deep-water anchorages are available in the estuary.

### CRANEAGE

By arrangement.

### ELECTRICAL POWER

By arrangement.

### FACILITIES

- 250 berth marina complex.
- Passenger ferry terminal.
- Passenger rail terminal.
- Parking facilities.

### FRESH WATER

By arrangement.

### PILOTAGE

By arrangement with Clydeport. See Pilotage Directions, NTM No 2. Contact Estuary Radio on 0151 949 6651.

### TRANSPORT LINKS

Ardrossan is 30 miles from Glasgow.

The port has a main line passenger rail terminal which connects with the ferry service, and A-road access to motorway links throughout Scotland.

CalMac Ferry leaving Ardrossan Harbour  
©Tony Barr Photography



Aerial view of Ardrossan Harbour  
©Tony Barr Photography



# Clydeport Useful Contacts:

## ADMIRALTY CHARTS & COMPASS ADJUSTING

### Poseidon Navigation Services Ltd.

Carestown Steading, Deskford, Buckie, Moray, AB56 5TR  
Tel: 01542 841245 Mob: 07787 417797  
Email: tom.gun@poseidonnavigation.com  
Web: www.poseidonnavigation.com

## CHANDLERY / SHIPS STORES

### Ecosse Marine Ltd.

Unit 8, Forbes Court, Middlefield Ind. Estate, Falkirk, FK2 9HQ  
Tel: 01324 624492 Fax: 01324 637144  
Email: info@ecossemarine.co.uk  
Web: www.ecossemarine.co.uk

### Gael Force Marine.

16-18 Earl Haig Road, Hillington Ind Estate, Glasgow, G52 4JU  
Tel: 0141 941 1211  
Web: gaelforcemarine.co.uk

### Seven Oceans Ltd.

30 Fentiman Way, Harrow, London, HA2 8FD  
Tel: 02084 238007 Mob: 07415 320781  
Email: info@sevenoceans.uk Web: www.sevenoceans.uk

## CONSULTING ENGINEERS

### AeCOM.

7TH Floor, Aurora, 120 Bothwell Street, Glasgow, G2 7JS  
Tel: 0141 248 0300 Email: jill.meikle@aecom.com  
Web: www.aecom.com

### Arch Henderson & Partners Ltd.

142 St Vincent Street, Glasgow, G2 5LA  
Tel: 0141 227 3060 Email: glasgow@arch-henderson.co.uk  
Web: www.arch-henderson.co.uk

### Atkins Ltd.

200 Broomielaw, Glasgow, G1 4RU  
Tel: 0141 220 2000 Email: info@atkinsglobal.com  
Web: www.atkinsglobal.com

**AECOM** Imagine it. Delivered.

## Transforming Scotland's ports

Drawing on our integrated offer and global experience, we plan, design and deliver ports for the future.

**aecom.com**

Contact Jill Meikle for more information:  
+44 (0)141 275 6535  
jill.meikle@aecom.com



Tugboat services are available at all Clydeport Ports  
©Scottish Photography Productions

## Civil & Structural Engineering

## Marine Environmental Services



NIRAS is an international consultancy with a strong Scottish presence offering comprehensive expert advice and solutions for all port and marine projects including Maritime Engineering, Coastal Engineering, Offshore Wind and Environmental Services.

With 2,300 experts executing 7,000 projects worldwide we offer unparalleled expertise and service on all types of ports, marine and offshore projects.

To hear how we can assist you, please contact our Glasgow office.

### Contact:

marineUK@niras.com  
0141 882 6600  
www.niras.com/UK

**NIRAS**



**Graham Construction.**

1 Seaward Place, Centurion Business Park, Glasgow, G41 1HH  
 Tel: 0141 418 5550 Fax: 0141 429 1129  
 Web: [www.graham.co.uk](http://www.graham.co.uk)

**Mott MacDonald.**

1 Atlantic Quay, Broomielaw, Glasgow, G2 8JB  
 Tel: 0141 222 4500 Fax: 0141 221 2048  
 Web: [www.mottmac.com](http://www.mottmac.com)

**Niras Group UK Ltd.**

Suite 18, Merlin House, Mossland Road, Glasgow, G52 4XZ  
 Tel: 0141 882 6600 Email: [glasgow@niras.com](mailto:glasgow@niras.com)  
 Web: [www.niras.com/uk](http://www.niras.com/uk)

**RPS Group.**

Elmwood House, 74 Boucher Road, Belfast, BT12 6RZ  
 Tel: 02890 667914 Email: [mark.mcconnell@rpsgroup.com](mailto:mark.mcconnell@rpsgroup.com)  
 Web: [www.rpsgroup.com](http://www.rpsgroup.com)

**CRANE HIRE****JLW Solutions.**

Waulkmill Farm Lodge, Charlestown, Dunfermline, KY12 9JU  
 Tel: 01383 872150 Email: [m2jlw@aol.com](mailto:m2jlw@aol.com)  
 Web: [jockywilsonblog.wordpress.com/about/](http://jockywilsonblog.wordpress.com/about/)

**JST Services.**

Highfield Business Park, St Quivox, Ayr, KA6 5HQ  
 Tel: 01292 262050 Web: [www.jstservices.co.uk](http://www.jstservices.co.uk)

**Molson Green.**

Lochil Industrial Park, Deanston, Doune, Stirling, FK16 6AD  
 Tel: 01786 841598  
 Email: [info@molsongroup.co.uk](mailto:info@molsongroup.co.uk)  
 Web: [www.molsongroup.co.uk](http://www.molsongroup.co.uk)

**CREW/CARGO TRANSFERS****SMS Ltd.**

Easdale, Oban, Argyll, PA34 4RF  
 Tel: 01852 300 341 Email: [marineservicesoban@seafari.co.uk](mailto:marineservicesoban@seafari.co.uk)

**DIVING / MARINE CONTRACTORS****Caldive Ltd.**

18 High Street, Invergordon, IV18 0ET  
 Tel: 01349 853688 Fax: 01349 853677 Web: [www.caldive.co.uk](http://www.caldive.co.uk)

**Clyde Commercial Diving Ltd.**

Rothesay East Dock, Dock Street, Clydebank,  
 West Dunbartonshire, G81 1LX  
 Tel: 0141 952 1579 Out of Hours: 07956 151654  
 Email: [billy@clydecommercialdivingltd.com](mailto:billy@clydecommercialdivingltd.com)  
 Web: [www.clydecommercialdivingltd.com](http://www.clydecommercialdivingltd.com)

**Shearwater Marine Services Ltd.**

Unit 19 Highland Ave., Sandbank Business Park, Dunoon, PA23 8PB  
 Tel: 01369 705949 Fax: 01369 705925  
 Web: [www.shearwatermarine.co.uk](http://www.shearwatermarine.co.uk)

**DREDGING / MARINE CONTRACTORS****Boskalis Westminster.**

Westminster House, Crompton Way, Fareham, Hants, PO15 5SS  
 Tel: 01489 885933 Fax: 01489 578588 Web: [www.boskalis.co.uk](http://www.boskalis.co.uk)

**Van Oord (UK) Ltd.**

Bankside House, Henfield Road, Small Dole, West Sussex, BN5 9XQ  
 Tel: 01273 494843 Web: [www.vanoord.com](http://www.vanoord.com)

**DRY DOCKING / ENGINEERING / SHIPBUILDERS****Dales Marine Services.**

James Watt Dock, Greenock, PA15 2DS  
 Tel: 01475 725372 Fax: 01475 725377 Web: [www.forth-group.co.uk](http://www.forth-group.co.uk)

**Inchgreen Dry Dock.**

Port Glasgow Road, Greenock. PA15 2NA  
 Tel: 0141 221 8733 Email: [info@peelports.com](mailto:info@peelports.com)  
 Web: [www.peelports.com](http://www.peelports.com)

**FENDERS****Fendercare Marine.**

Enterprise House, Harveys Lane, Seething, Norfolk, NR15 1EN  
 Tel: 01508 482691 Email: [sales@fendercare.com](mailto:sales@fendercare.com)  
 Web: [www.fendercare.com](http://www.fendercare.com)



[www.mirrenmarine.com](http://www.mirrenmarine.com)



**25 Years experience operating workboats on the River Clyde & surrounding Lochs.**

- Rope running
- Navigation aids
- Safety boats
- Quay maintenance
- Power washing & painting
- Light towage
- Pontoon maintenance
- Light cargo transport
- Quayside fenders



**Tel 07515 834178**  
**[mirrenmarine@gmail.com](mailto:mirrenmarine@gmail.com)**

Registered Office: 3 Annetyard Drive,  
 Skelmorlie, PA17 5BN



All Clydeport cargo is stored in our quayside warehouses to ease unloading and access to cargo  
©Scottish Photography Productions



KGV Dock is recognised as one of the safest ports in the UK  
©Scottish Photography Productions

## FERRY SERVICES

### Argyll Ferries Ltd.

Ferry Terminal, Gourock, PA19 1QP  
Tel: 0800 066 5000 Email: info@argyllferries.co.uk  
Web: www.argyllferries.co.uk

### CalMac Ferries Ltd.

The Ferry Terminal, Gourock, PA19 1QP  
Tel: 0800 066 5000 Email: Enquiries@calmac.co.uk  
Web: www.calmac.co.uk

### Western Ferries (Clyde) Ltd.

Hunter's Quay, Dunoon, Argyll, PA23 8HJ  
Tel: 01369 704452 Email: enquiries@western-ferries.co.uk  
Web: www.western-ferries.co.uk

## FUELS / LUBRICANTS

### A & S International.

The Old Brewery, 2 Brewery Court, High Street, Theale, RG7 5AH  
Tel: 0118 930 4321 Email: hello@aands-international.com  
Web: aands.international.com

### Certas Energy.

Tryst House, Glenbervie Business Park, Larbert, FK5 4RB  
Tel: 01324 408044 Fax: 01324 639944  
Web: www.certasenergy.co.uk

### Highland Fuels.

Rothesay Dock, Clydebank, G81 1YE  
Tel: 0800 224224 Web: www.highlandfuels.co.uk

## HAULAGE / DISTRIBUTION

### Collett & Sons.

Baltic House, Central Dock Road, Grangemouth, FK3 8TY  
Tel: 08456 255299 Web: www.collett.co.uk

### Streamline Shipping Group.

Unit 6, Motorlink, Righead Industrial Estate, Bellshill, ML4 3LA  
Tel: 01698 847930 Fax: 01698 847931  
Web: www.streamlineshippinggroup.com

### West of Scotland Heavy Haulage.

Unit 2a Dunnswood Road,  
Wardpark South Ind. Estate, Cumbernauld, G67 3EN  
Tel: 01236 453535 Mob: 07900 918676  
Email: jim-my@westofscotlandheavyhaulage.com

## INDUSTRIAL MARINE LIGHTING

### Eco Light Systems.

Caledonia House, Evanton Drive, Glasgow, G46 8JT  
Tel: 0141 2708054  
Email: simon@ecolightsystems.co.uk  
Web: www.ecolightsystems.co.uk

## LOAD MONITORING EQUIPMENT

### Load Monitoring Systems Ltd.

14 Silverburn Place, Bridge of Don, Aberdeen, AB23 8EG  
Tel: 01224 446100 Email: LMS@loadsystems.co.uk  
Web: www.loadsystems.co.uk

## MARINA SYSTEMS

### Inland and Coastal Marina Systems.

Unit 2, 21 Coullbank Industrial Estate, Lossiemouth, Moray, IV31 6NG  
Tel: 01343 813233 / 815382 Email: sales@inlandandcoastal.com  
Web: www.inlandandcoastal.co.uk

## MARINE / CARGO SURVEYORS

### A. Adamson & Co.

5 Kerse Road, Grangemouth, FK3 8HQ  
Tel: 01324 665696 Fax: 01324 473579  
Web: www.aadamson.co.uk

### Osprey Marine.

Hetton House, Paxton, Berwickshire, TD15 1TE  
Tel: 01289 386557 Mob: 07966 160846 Fax: 01289 386842  
Email: michaelince@osprey-marine.co.uk  
Web: www.osprey-marine.co.uk

## MARINE CONTRACTING / MARINE & CARGO SURVEYING

### Northern Marine Services.

31 Telford Street, Wick, KW1 5EO  
Tel: 01955 605440 Mob: 07833 323939 (24hrs)  
Email: info@northernmarineservices.co.uk  
Web: www.northernmarineservices.co.uk

## MARINE INSURANCE

### A-Plan Insurance.

2nd Floor, 1 St Swithuns Street, Worcester, WR1 2PY  
Tel: 01905 930760 Web: www.aplan.co.uk

## VIPER WIRE ROPE LUBRICATORS

Providing fast and effective cleaning and lubrication of wire ropes.

REDUCE LABOUR REQUIRED TO LUBRICATE WIRE ROPES BY UP TO 90%

INCREASE WIRE ROPE LIFE UP TO 300%

2000m/h GREASE UP TO 2000M OF ROPE PER HOUR

LIGHT WEIGHT EASY TO INSTALL AND OPERATE

LESS RISK SAFER THAN MANUAL GREASING

ROPE LIFE IMPROVED LUBRICATION = INCREASED ROPE LIFE

Available from

INTERNATIONAL  
www.aands.international

www.viperwrl.com

#### MARINE AND OFFSHORE ENGINEERING

##### **Draeger Marine & Offshore.**

2 Tern Place, Denmore Ind. Estate, Bridge of Don, Aberdeen, AB23 8JX  
Tel: 01224 701569 Email: aberdeensales.uk@draeger.com  
Web: www.draeger.com/marine-offshore-uk

#### MARINE SUPPLIES / MARINE AND PORT SERVICES

##### **Forth Logistics and Marine Services.**

Merlin House, 5 Cross Way, Dalgety Bay, Fife, KY11 9JE  
Tel: 01383 829829  
Email: office@forthlogistics.com  
Web: www.forthlogistics.com

#### MARINE TRAINING / OPERATIONS PLANNING

##### **Marketec.**

Unit 5, 50 Cotton Street, Aberdeen, AB1 5EE  
Tel: 01224 574758 Email: bruce@marketec.co.uk  
Web: www.marketec.co.uk

#### MARITIME AND COASTGUARD AGENCY

##### **Glasgow Marine Office.**

1st Floor Westpoint One, 1 Marchfield Drive, Paisley, PA3 2RB  
Tel: 0141 887 6430 Fax: 0141 842 1258  
Email: glasgow\_mo@mcga.gov.uk  
Web: www.mcga.gov.uk

#### MISSION TO SEAFARERS SCOTLAND

Providing support for all seafarers  
24 hour Emergency Tel: 01506 842629  
(Referral service may be in operation)  
Email: timothy.tunley.mts@gmail.com  
Web: www.missiontoseafarers.org

#### NAVIGATIONAL AIDS

##### **Navmoor Ltd.**

UKSE Innovation Centre, Festival Drive, Ebbw Vale, Gwent, NP23 8XA  
Tel: 02922 638222 Mob: 07393 441562  
Email: info@navmoor.com  
Web: www.navmoor.com

## Specialist Photography Services to the Marine, Maritime, Lifting & Specialist Haulage Sectors



**PHOTOGRAPHY IN SAFE HANDS**



**David Pollock**

[www.scottishphotographyproductions.co.uk](http://www.scottishphotographyproductions.co.uk)

[www.facebook.com/scotpics/timeline](https://www.facebook.com/scotpics/timeline)

E: david.pollock@scottishphotographyproductions.co.uk | T: 07792 167300



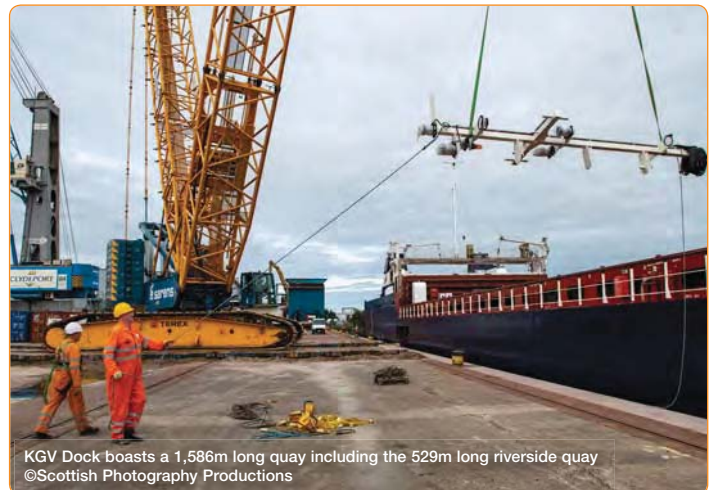
**T: 0141 941 3366**  
**M: 07979 470 206**  
**keith@offshoreworkboats.co.uk**

## OFFSHORE WORKBOATS

*Offshore Workboats Ltd is a Scottish based and  
long established supplier of Multicats, Workboats,  
Safety boats and barges throughout the UK.*



**Offshore Workboats Limited**  
Clyde Boatyard, Dock Street  
Clydebank G81 1LX



KGV Dock boasts a 1,586m long quay including the 529m long riverside quay  
©Scottish Photography Productions

Greenock offers 25,000m<sup>2</sup> covered storage and a bonded multi-user warehouse  
©Scottish Photography Productions





KGV Dock is located on a vast site with 32.6 hectares of outside storage  
©Scottish Photography Productions

## MALLAIG BOATYARD LTD.

Harbour Slipways, Mallaig, PH41 4QS  
M: 07833 488593 (24/7) | T/F: (01687) 462304  
E: Office@mallaigboatyard.co.uk



### BOAT BUILDERS & MARINE ENGINEERS • SHIP CHANDLERS

Repairs and installations on all types of craft • Electrical Repairs  
Slipping vessel up to 90ft & 200 tonnes • Welding/ Fabrication  
Hydraulics • Diesel Service • Main agents: Baudouin Marine Engines

### PROJECT MANAGEMENT / CONTRACT MANAGEMENT Leapmoor LLP.

Municipal Buildings, Suite 3, 122 Shire Street, Gourock, PA19 1QZ  
Tel: 01475 648778 Mob: 07803 260145  
Email: gary@leapmoor.co.uk Web: www.leapmoor.co.uk

### R.N.L.I.

#### Helensburgh Lifeboat Station.

Rhu Marina, Gareloch Road, Rhu, Helensburgh, G84 8LH  
Tel: 01436 820438 Email: helensburgh@rnli.org.uk Web: www.rnli.org

#### Largs Lifeboat Station.

Greenock Road, North Promenade, Largs, KA30 8PQ  
Tel: 01475 675149 Email: largs@rnli.org.uk Web: www.rnli.org

### SHIPS AGENTS / FREIGHT FORWARDERS

#### ALS UK International Limited.

1501 Hedon Road, Kingston Upon Hull, HU9 5NX  
Tel: 01482 796214 Email: info@als-europe.com  
Web: www.abnormal-loads.com

### Alfa Shipping Services Ltd.

Rothsay Dock (West), Cart Street, Glasgow, G81 1QB  
Tel: 0141 390 6883 Mob: 07904 813318  
Email: info@alfashipping.co.uk Web: www.alfashipping.co.uk

### Armitt Group.

26-30 South Road, Weston Point, Runcorn, Cheshire, WA7 4EZ  
Tel: 01928 575926 Email: enquiries@armitt.co.uk  
Web: www.armitt.co.uk

### Collett & Sons Ltd.

Baltic House, Central Dock Road, Grangemouth, FK3 8TY  
Tel: 08456 255299  
Web: www.collett.co.uk

### Cory Brothers Shipping Agency Ltd.

19 Grangemouth Enterprise Centre, Grangemouth, FK3 8XS  
Tel: 01324 473382 Fax: 01324 474883  
Web: www.cory.co.uk

# Coastworks

## workboats, tugs & barges

Our fleet of workboats, pontoons, spudleg, flattop crane and excavator barges are available for charter to the dredging, marine construction, harbour maintenance and renewable energy industries throughout the UK and Europe.

**Coastworks Operations Ltd. 8 Allanton Park Terrace, Fairlie, Ayrshire KA29 0AW Phone: +44 (0) 1475 568 572 Fax: +44 (0) 1475 568 153**  
**E-Mail: info@coastworks.co.uk Web: www.coastworks.co.uk**





## Alfa Shipping Services Ltd

19/5 Kirn Street  
Glasgow G20 0DD  
United Kingdom

T: 0044 (0)7904 813318 | M: 07904 813318 (24 hrs)

T/F: 0044 (0)141 390 6883 | E: info@alfashipping.co.uk | Skype: alfaship 1



**Over 40 years' experience in the shipping business encompassing Ship's Agency, Shipbroking, Cargo Superintendence & Pre-Shipment Inspections.**

With port offices in Clydebank and Inverkeithing we provide coverage for all Scottish ports. We are designated agents for Clydebank Port Services who operate an independent port facility on the Clyde.

[www.alfashipping.co.uk](http://www.alfashipping.co.uk)



Cruise Ship Azamara Journey under tow at Glasgow KGV  
©Scottish Photography Productions

### WORKBOATS

#### Coastworks Operations Ltd.

8 Allanton Park Terrace, Fairlie, Largs, KA29 0AW

Tel: 01475 568572 Fax: 01475 568153

Email: info@coastworks.co.uk Web: www.coastworks.co.uk

#### Inverlussa Marine Services.

By Craignure, Isle of Mull, Argyll, PA65 6BD

Tel: 01680 812109 Fax: 01680 812137 Web: www.inverlussa.com

#### GSS Marine Services.

Silverhills, Rosneath, Argyll, G84 0RW

Tel: 01436 821277 Email: info@gssplant.co.uk

Web: www.gssplant.co.uk

#### Mirren Marine Ltd.

3 Annetyard Drive, Skelmorlie, PA17 5BN

Tel: 07515 834178 Email: mirrenmarine@gmail.com

Web: www.mirrenmarine.com

#### Offshore Workboats.

Clyde River Boatyard, Rothesay Dock East,

Dock Street, Clydebank, G81 1LX

Tel: 0141 941 3366 Mob: 07979 470206

Email: keith@offshoreworkboats.co.uk

Web: www.offshoreworkboats.co.uk

#### Denholm Wilhelmsen Ltd.

First Floor, Epoch House, Falkirk Road, Grangemouth, FK3 8WW

Tel: 01324 482201 Email: enquiries@denholm-wilhelmsen.com

Web: www.denholm-barwil.com

#### GAC Shipping (UK) Ltd.

Gateway Business Park, Beancross Road, Grangemouth, FK3 8WX

Tel: 01324 482811 Fax: 0207 0679138 Web: www.gac.com

#### Streamline Shipping Group.

7 Hornock Road, Gartsherrie Ind. Estate, Coatbridge, Glasgow, ML5 2QA

Tel: 01698 847930 Email: getaquote@streamlineshippinggroup.com

Web: www.streamlineshippinggroup.com

#### SHIP BUILDERS

##### Damen Shipyards.

P.O. Box 1, 4200 AA, Gorinchem, The Netherlands

Tel: +31 (0)183 63 99 11 Email: info@damen.com

Web: www.damen.com

##### Ferguson Marine.

Newark Works, Castle Road, Port Glasgow, PA14 5NG

Tel: 01475 742300 Email: enquiries@fergusonmarine.com

Web: www.fergusonmarine.com

#### SOLICITORS

##### Brodies LLP.

2 Blythswood Square, Glasgow, G2 4AD

Tel: 0141 248 4672 Fax: 0141 221 9270 Web: www.brodies.co.uk

#### STEVEDORING

##### JLW Solutions.

Waulkmill Farm Lodge, Charlestown, Dunfermline, KY12 9JU

Tel: 01383 872150 Email: m2jlw@aol.com

Web: jockywilsonblog.wordpress.com/about/

#### TOWAGE / MARINE SERVICES

##### Clyde Marine Services Ltd.

Victoria Harbour, Greenock, PA15 1HW

Tel: 01475 721281 Fax: 01475 888023 Web: www.clyde-marine.co.uk

##### Svitzer Marine Ltd.

Greenock Ocean Terminal, Patrick Street, Greenock, PA16 8UU

Tel: 0845 608 1353 (24hrs) Tel: 01642 258 361

Email: gbgrk.operations@svitzer.com Web: www.svitzer.com



**Agricultural industry | Shipping industry  
Landfill and recycling | Marine works  
Dock-handling / port operator | Stevedoring**



For more of what we do visit:

<https://jockywilsonblog.wordpress.com/about/>

**MULTI TOOL, MULTI SERVICE, EVERY JOB**

**T: 01383 872150 | E: m2jlw@aol.com**



# Advertisers Index

A & S International	21, 211	Glenalmond Timber Co Ltd	103
A. Adamson & Co	80	Global Energy Group	193, 207, 209, 214, 216, 218, 220, 221, 223, 225
A.S.A.P. Supplies Ltd	151	Graham Construction	89
Aberdeen Compass Adjusting Ltd	141	Great Glen Shipping Company Ltd	240
Aberdeenshire Council	168	Greenhowe Marine Services	128
ABPmer	173	Guthrie Aerial Photography	28
AECOM	19, 73, 123, 211	Highland Council	248
Affric Limited	269	Highland Fuels	117, 184, 261
Alfa Shipping Services Ltd	24	Holy Loch Port	40
All-Energy 2021	60	IDI Services Ltd	205
A-Plan Insurance	93, 287	Inland and Coastal Marina Systems Ltd	163
Arbroath Harbour (Angus Council)	108	Invest in Perth	106
Arch Henderson LLP	132	J D Wood (UK) Ltd	212
Archer Knight	139	James Hutton Ltd	125, 229
Argyll & Bute Council	42, 47	JLW Solutions	24, 51, 87
Armitt Group	245	JST Services (Scotland) Ltd	35
Aspect Land & Hydrographic Surveys Ltd	Inside Front Cover	Kishorn Port Ltd	256
Aspect Land & Hydrographic Surveys Ltd	58, 143, 296	Leapmoor LLP	203, 279
Associated British Ports	30	Leask Marine	277, 278
Atkins Ltd	46	Lerwick Port Authority	288
Boskalis Westminster Ltd	150	Liebherr - GB Ltd	29, Inside Back Cover
British Ports Association	310	Load Monitoring Systems Ltd	130, 131
Bubble & Goose	215	Macduff Ship Design Ltd	137
Buccaneer Ltd	172	Macduff Shipyards Ltd	171
Caldive Ltd	213, 238	MacGregor (GBR) Ltd	151
CalMac Harbours	54	Mackay Boatbuilders (Arbroath) Ltd	109
Calport Ltd	102	Mackinnons Solicitors	133
Clarksons Port Services Ltd	15, 85, 96, 112, 135, 152, 202, 295	Mallaig Boatyard Ltd	23, 244
Clydebank Port Services	25	Mallaig Harbour Authority	243
Coastal Connection	53	Marine Scotland	314
Coastworks Operations Ltd	23, 88, 126, 199	Maritime & Coastguard Agency	316
Collett & Sons Ltd	79	Maritime Journal	285
Comhairle nan Eilean Siar	262	Maritime Progress Ltd	11
Corilla Marine	136	Marketec	124
Cory Brothers	83	Marsh Commercial	52, 286, 307
Craigie Engineering Ltd	286	McLaughlin & Harvey Ltd	129
Cruise Scotland	312	Mechanicoat Limited	190, 275
Draeger Marine & Offshore	128	Mirren Marine	20
DuroWipers	73, 294	Mission to Seafarers	33, 70, 78, 142, 309
Ecosse Marine Ltd	10, 85, 125, 207	Molson Green	2
Euronete	157, 161, 291	Montrose Port Authority	110
Everard Insurance Brokers Ltd	167	Moray Council	181
Eyemouth Harbour Trust	98	Moray First Marine Ltd	175
Eyemouth Marine Ltd	99	Mott MacDonald	191
Fairlie Quay	36	Navmoor Ltd	Outside Back Cover
Ferguson Transport & Shipping	53, 237, 239, 244, 249, 254	Niras Group (UK) Ltd	19
Ffolkes Offshore Ltd	114, 133, 149, 297	NorSea Group (UK) Ltd	147
Forth Bridge Stevedoring Ltd	97	North East Scotland Stevedoring Ltd	176
Forth Logistics Marine Services	61	Northern Lighthouse Board	48, 318
Forth Ports	64	NorthLink Ferries Ltd	127
Fraserburgh Harbour Commissioners	158	Northwards Ltd	1
Gael Force Group	241	Ocean Kinetics Ltd	297
George Brown & Sons	71	Offshore Workboats	22, 52
Girvan Harbour	28	Oilfast Ltd	9





# SHEARWATER MARINE SERVICES



## Innovative and Cost Effective Marine Engineering Solutions



**Ships Husbandry  
Services**



**Topside & Underwater Marine  
Civil Engineering Support**



**Underwater Welding  
Repairs**



**Survey & Inspection**



**Cathodic Protection  
Design & Installation**



## Advertisers Index (cont.)

Orca Oceanic Systems	120
Orkney Islands Council	270, 272, 273, 280, 281
Osprey Marine	101
PBP Services	162
Peelports Clydeport	12, 13
Perth Harbour	104, 107
Peterhead Port Authority	144
Petroineos	83
Port Babcock Rosyth	56
Port of Berwick	100
Port of Cromarty Firth	200
Port of Inverness	186
Poseidon Navigation Services Ltd	134
PSG Marine & Logistics Ltd	196
Rix Shipping (Scotland) Ltd	115
RPS Group	153
Savoch Hire Ltd	146, 167
Scarborough Borough Council (SBC Dredging Services)	88
Scotavia Images	39, 205
Scotlog Sales Ltd	190
Scottish Photography Productions	22
Scrabster Harbour Trust	232
Seafarers UK	95
Searoute Port Services Ltd	138
Seawork 2021 International	183, 322
Seven Oceans Ltd	136
Shearwater Marine Services Ltd	324
Shetland Islands Council	298, 303
Simpson Ltd	191, 209, 228, 231
Skipper Expo International 2021	69, 155, 160
SMS Ltd (Specialised Marine Support Ltd)	4
Southbay Civil Engineering Ltd	91
Stoddart Crane Hire	189
Stornoway Port Authority	266
Stornoway Shipping Services Ltd	267
Streamline Shipping Group	122, 293
T. Barbour Ltd	49
Tarbert Harbour Authority	41
Targe Towing Ltd	77, 95, 115, 143, 157
The Smart Ports Alliance	91, 203
Tobermory Harbour Authority	252
Tom Morrow Tarpaulins Ltd	195
Troon Tug Co Ltd	34
UK Harbour Masters' Association	320
Ullapool Harbour Trust	258
Unique Group	118
VolkerBrooks	7
VolkerLaser	137
W. Knight Watson & Co. Ltd	81
West of Scotland Haulage	17
Whittaker Engineering Limited	116
Whyte Cargo Handlers Ltd	68, 113, 140, 154, 165
Wick Harbour Authority	226

+44 (0) 1369 70 5949 [shearwatermarine.co.uk](http://shearwatermarine.co.uk)

[commercial@shearwatermarine.co.uk](mailto:commercial@shearwatermarine.co.uk)



# Specialist Port Solutions from Liebherr



## **Liebherr manufactures market leading machines for every size of port, type of vessel and cargo**

Liebherr Harbour Mobile Cranes are characterised by their outstanding mobility thanks to a unique undercarriage design featuring individually mounted sets of wheels which enables movement in all directions. The optimised interaction between powerful hydrostatic transmission and advance Liebherr electronics ensures short, productive cycles in bulk handling.

Ideal for harbour-related operations Liebherr Material Handlers are equipped with the patented Liebherr Energy Recovery System (ERC) which results in significantly greater material handling performance as well as improved machine economy. Robust design and the use of in-house manufactured components guarantees maximum quality and ensures a long service life.

**Call today on: 01767 602100**

Liebherr-Great Britain Limited, Normandy Lane,  
Stratton Business Park, Biggleswade,  
Bedfordshire, SG18 8QB. [www.liebherr.com](http://www.liebherr.com)

# **LIEBHERR**



**navmoor**  
AIDS TO NAVIGATION

# We supply, Install & Maintain Aids To Navigation

## Buoys

Polyethylene & Steel  
IALA Compliant  
Navigation Buoys.  
Elastomer &  
Polyethylene  
Mooring Buoys.

## Wave and Meteorological

Wave  
Met Hydro  
Turbidity  
Aquaculture  
Including telemetry  
back to Navmoor's  
very own Portal.

## Lanterns

Solar  
Leading Lights,  
Lighthouses,  
Sectored Lights,  
Obstruction and  
Explosion Proof.

## Telemetry

AIS, GSM,  
SATCOM, Radio  
Link and Internet  
of Things (IOT) –  
Fully integrated  
asset monitoring  
and control.

## Moorings

Marine Grade  
Chain, Shackles,  
Swivels, Concrete  
& Cast Iron Sinkers.

## Structures

Daymarks,  
Lattice Towers,  
Tilting Columns  
and Top Marks.

**We offer supply, installation & maintenance of all of  
the above, as well as IALA compliance  
recommendations, and surveys.**

**Let us steer you in the right direction**

**info@navmoor.com**  
**+44(0)2922 638222**

**navmoor.com**

