

Ports of Scotland

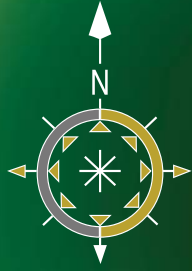
Yearbook



2020



39TH EDITION



NORTHWARDS

TRANSPORT AND DISTRIBUTION



Delivering logistics solutions in the north of Scotland

- Freight shipping, cargo handling, road haulage & distribution
- Direct connections into Scandinavia and Europe
- HGV workshop services
- Next day pallet deliveries collections throughout the UK
- Daily overnight service between all depots
- Temperature controlled transportation
- Livestock movement
- Ships agents



CONTACT OUR DEPOTS:

SHETLAND

Anderson Base, Gremista, Lerwick ZE1 0PX
01595 694452

ORKNEY

01856 873030

ABERDEEN

01224 213215

SCRABSTER

01847 892052

INVERNESS

01463 233299

GLASGOW

01236 728108



info@northwardsltd.co.uk

www.northwardsltd.co.uk





VolkerLaser deliver specialist structural engineering to ports, docks, piers and jetties. Working alongside various port authorities as well as government bodies such as the Environment Agency, we have extensive experience within the marine sector.

Marine structures pose more challenges due to the site location and the additional environmental considerations relating to the aggressive nature of the sea. VolkerLaser can provide innovative engineering solutions to ensure the necessary works are carried out safely within the complex parameters of a marine project.

Our services include:

- Cathodic protection
- Steelwork repairs
- Concrete and masonry repairs
- Sheet and tubular pile repairs
- Hydro-demolition and grit blasting
- Structural monitoring, surveys and inspections
- Temporary works design and installation
- Cofferdams and specialist access
- Port infrastructure civil engineering

Enquiries: 07771 834 005

www.volkerlaser.co.uk

Specialist service supplier of plant and equipment, site accommodation and Linkflote pontoons, for hire and sale.

Services include:

- Access ramps
- Landing stages
- Floating bridges
- Work platforms
- Ferries/barges
- Plant and equipment
- Workboats, tugs and winches

T: +44 (0)1524 599 400

E: enquiries@volkerbrooks.co.uk

W: www.volkerbrooks.co.uk



Ports of Scotland[©]

Serving Industry & Commerce

Ports of Scotland[©] is owned and published by Maritime Publications Ltd.

Tel: 01877 330519

Email: info@portsofscotland.co.uk

Web: www.portsofscotland.co.uk

Find us on  **Linked** 



Cover photograph
Aerial view of Lerwick Harbour
©John Coutts

Price £30.00

Section 4
Highlands & Islands
Pages 180-303

Section 3
North East
Pages 116-179

Section 1
South West
Pages 4-55

Section 2
South East
Pages 56-115

Section 5
Information & Features
Pages 304-320

Aberdeen	119
Arbroath	106
Ardishaig	35
Ardrossan	16
Ardeenish	257
Ayr	24
Banff	169
Berwick upon Tweed	98
Braefoot	81
Buckie	173
Burghead	178
Burntisland	78
Cainryan	54
CalMac Harbours	40
Campbeltown	42
Clydebank	23
Corpach	235
Cromarty Firth	191
Cullen	176
Cullivoe	296
Dundee	88
Dunoon	45
Eyemouth	96
Fairlie	32
Findochty	178
Fraserburgh	154
Gairloch	244
Girvan	30
Glasgow	12
Gourdon	170
Grangemouth	70
Greenock	8
Helmsdale	246
Holy Loch	36
Hopeman	176
Hound Point	81
Hunterston	14
Invergordon	191
Inverkeithing	95
Inverness	183
Johnshaven	170
Kallin	257
Kinlochbervie	243
Kirkcaldy	80
Kirkwall	268
Kishorn	249
Kyle of Lochalsh	245
Leith	74
Lerwick	282
Leverburgh	257
Lochinver	242
Lochmaddy	257
Loch Ryan	55
Lossiemouth	171
Lyness	276
Macduff	165
Mallaig	238
Miavaig	257
Methil	79
Montrose	109
Nigg	213
Oban	46
Perth	100
Peterhead	141
Portknockie	176
Portree	247
Portsoy	170
Rosehearty	169
Rosyth	61
Rothesay	45
Scalloway	294
Scapa Flow	272
Scrabster	226
Stonehaven	171
Stornoway	258
Stromness	278
Sullom Voe	298
Tarbert	37
Tobermory	38
Troon	27
Uig	246
Ullapool	252
Whitehills	178
Wick	222

Whilst every care has been taken to ensure the accuracy of the information in this publication Maritime Publications Ltd, (trading as Ports of Scotland) it's shareholders, directors, employees or anyone acting on their behalf do not accept responsibility for any errors, omissions, misrepresentation or misinterpretation. Port users are recommended to verify with the respective Port and Harbour Authorities that the information given in this publication is correct and remains valid for the time of and intended use. Information in the advertisements should be verified with the advertisers. No part of the publication may be reproduced in any form or by any electronic or mechanical means including information storage and retrieval systems without the written permission of the publishers.

© 2019/20 Maritime Publications Ltd. All rights reserved.





SMS LTD

Tel: +44 (0)1852 300589

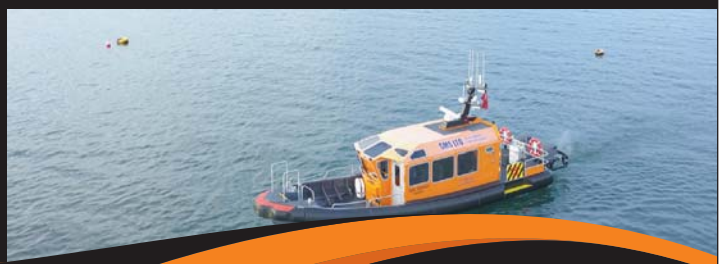
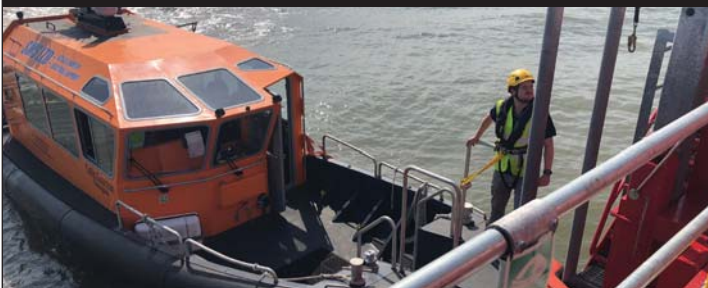
info@specialisedmarinesupport.com

www.specialisedmarinesupport.com

Vessel Charter and Logistical Support

Specialised Marine Support Ltd (SMS) is an ISO 9001:2008 accredited company based in Scotland providing support vessels to the offshore renewables and offshore construction industries throughout Europe. All vessels are road transportable.

Personnel Transfers | Equipment Transfers | Windfarm Support
Cable Support | Guard/Safety Vessel | Survey Support



PRINCIPAL OFFICIALS

Chief Executive: Capt. Calum A.S. Grains
Harbourmaster: Capt. Alexander M. Simpson

Location: Latitude 60° 09'N
Longitude 01° 08'W

Britain's "Top" Port

As the main port for Shetland, Lerwick is a vital component in the islands' economic infrastructure. At the crossroads of the North Sea and north-east Atlantic, it is also Britain's most northerly commercial port, handling over 5,000 vessels annually.

Lerwick Harbour is one of the principal deep water ports in the northern North Sea and its versatile facilities serve a wide variety of users. With two entrances and a mean tidal range of only 1.7 metres, it is open to shipping in all weathers and operates around-the-clock. Continuous monitoring by computerised harbour radar, a Pilotage service and Harbour tugs are available with up to 24 tonne bollard pull.

New Fishmarket

Construction of a new fishmarket at Mair's Quay is on track for completion late spring 2020. The project is backed by the European Maritime and Fisheries Fund and Highlands and Islands Enterprise.

The new market will more than double existing fish landing capacity at the port, bringing significant improvements in the landing of fish and supporting services, for example improving sea and land access, being more energy efficient and providing better staff welfare facilities.

The new market will have four temperature-controlled bays extending to 1,600 square metres with more space for palletising fish, in a chilled dispatch area. Mair's Dock with a 151m long quay at a minimum six metres' water depth, can accommodate the larger whitefish vessels now operating.

WHEN IT COMES TO THE MARITIME INDUSTRY we know the ropes

As the principal commercial port for Shetland we're experienced in dealing with a wide range of maritime sectors and are equipped with a host of modern facilities, including 24 hour all-weather access and exceptional deep water quays.



A NEW WAVE
www.lerwick-harbour.co.uk

LERWICK
PORT AUTHORITY

The development will create a new hub for the fishing sector at Lerwick, with LHD Ltd, Shetland Fishermen's Association and Shetland Fish Producers' Organisation all set to relocate to the new building.

Mair's Pier

Mair's Pier, an L-shaped jetty provides over 800-metres of berthing with ultimately 10-metres' water depth alongside. The jetty is 60m wide at the root and 30m wide on the arm, with shore power, water and fuel bunkering all available at selected points on the quay. There is a new dedicated net mending area and large capacity power supply specifically to service pelagic vessel layby.



Construction is underway on Lerwick's new fishmarket at Mair's Quay, for completion early 2020.
©John Coutts



Dales Voe can accommodate the biggest heavy-lift vessels and rigs
©Rory Gillies

Dales Voe Base

Lerwick's Dales Voe already has the ability to accept the largest platform topsides using single-lift technology. Decommissioning, which is a good fit for Shetland in terms of size of workforce available locally matched with an efficient location, remains a key focus area for the Authority to provide continued activity in the oil & gas sector at the port.

Expansion of deep-water infrastructure at Dales Voe has more than doubled the quay availability there, with its design, length and strength futureproofing the deep water port for handling a wide range of opportunities and contractors in oil and gas and decommissioning. The port's strategic location is combined with the ability to accommodate the biggest heavy-lift vessels and rigs and flexibility to handle everything from large single-lift to piece small decommissioning operations.

A contract has been awarded for the construction of a decommissioning pad at Dales Voe to create a new fully-licensed pad extending to 20,000 square metres, with an impermeable surface. The first project for the new facility will be the disposal of the 12,500 tonne platform topside from the Ninian Northern platform, which will be removed and delivered by Allseas in spring 2020, using their single lift vessel *Pioneering Spirit*.

In a decommissioning first for the port in 2019, Lerwick Harbour took delivery of a project from the southern North Sea with the arrival of Spirit Energy's Markham Field ST-1 platform. The steel jacket and topsides, weighing a total of approximately 2,600 tonnes, were removed in single lifts and shipped by Seaway 7's vessel, *Seaway Strashnov*, to the deep-water Dales Voe Base to lift the structures on to the quayside. Dismantling and disposal of the structures will be undertaken by the Veolia/Peterson partnership.



Lerwick's strategic location in the North Sea is efficient and cost effective for offshore construction project support
©Dave Donaldson

At 127 metres, with a load-bearing capacity of 60 tonnes per square metre, and at 12.5 metres water depth alongside, Dales Voe Quay is one of the deepest and strongest of its type in the UK and is complemented with approximately 45,000 square metres of adjacent laydown.

Ultra Deep Water Quay

The findings of a Scottish Government-commissioned independent study announced in September 2018, identified Dales Voe as the optimal location in the UK for an ultra-deep-water decommissioning facility. The port has the deep water required to compete with overseas yards. This would bring significant benefits not only for Shetland, but as a key part of an integrated and networked Scotland wide decommissioning offering, with wider opportunities realised through the supply chain.

Greenhead Base

There are seven berths, with up to nine metres' water depth and over 780 metres of quays at Greenhead where Peterson UK Limited operate a multi-purpose service base. All quays are operated by the Port Authority and are common user. The Base also hosts a 20,000 square metre quayside licensed decommissioning pad operated by Veolia/Peterson, fabrication facilities, engineering works, offices and warehousing, lifting and distribution, plus open storage and laydown.

Oil and Gas

Lerwick Harbour provides a unique combination of a natural sheltered deep-water port, with competitive, comprehensive services and facilities, located at the heart of oil and gas fields to the east and west of Shetland – placing fields, current and future, within easy reach.



A decommissioning first for Dales Voe at Lerwick with a topside and jacket delivered from Spirit Energy's Markham field in southern north sea.
©Rory Gillies



Decommissioned subsea equipment being discharged at Lerwick
©Dave Donaldson

Significant developments during the past five decades to service offshore oil and gas operations, and the ground work laid in recent years, has proved valuable with the port able to grasp new opportunities to support this sector.

The port's latest developments underpin its continuing role as a leading support centre, with the versatile facilities servicing ongoing operations, including subsea developments – particularly west of Shetland; opening the door to further decommissioning work and satisfying the future capacity the UK sector requires.

Operators can take advantage of the port's services, facilities and location coupled with extensive laydown areas of over 120,000 square metres and adjacent deep water quays to support the biggest offshore construction projects. From a skilled and experienced workforce to ships agencies, stores to bunkering, warehousing to waste management, engineering to environmental services, and the infrastructure to handle everything from reels



The electronic fish auction operated by Shetland Seafood Auctions provides a competitive daily online marketplace for buyers and sellers
©Gareth Easton

to umbilicals, modules to subsea structures and pipes - Lerwick can meet the requirements of the industry.

Both the north and south harbour areas have water depths over 50 metres providing optional locations for the largest craft, used for deballasting, mobilisation, lifts and support operations. Lerwick is accessible to construction and diving support vessels at all times due to two entrances and north and south anchorages.

Fishing

Shetland is dependent on fishing and aquaculture – together the largest economic driver in the islands' economy, worth £310 million annually. The port is a bustling hub for an international fishing industry from start to finish, from catching through to exports.

In a national context, Shetland makes a huge contribution to the fishing industry, with more than one quarter of all fish landed in Scotland being landed in Shetland (26%). Lerwick is the UK's second largest landing port,



The Scottish Government has identified Dales Voe as the optimal location in the UK for ultra-deep-water quay infrastructure for decommissioning
©John Courtts

Photo John Courtts



Suppliers to the fishing and offshore industries.



As a world leader in serving the fishing and offshore industries, Euronete UK is the most reliable source for solutions that fit your specific application and budget needs.

Our broad range of product categories include netting, ropes, twines, steel wire ropes, buoys & floats, and hardware.

For more information:

euronete.co.uk
sales@euronete.co.uk
+44 (0)1224 626365

A WireCo® WorldGroup Brand

with almost three times more landings than the third ranked port. Boxes of white fish landed to the end of 2018 were 9.4% at 250,246 tonnes compared to the previous year, the highest since the 1980s, with a value up 25% to £23 million.

The Port Authority's commitment to the fishing industry also includes shareholdings in key companies to which, as part-owners, it also contributes experience through directorships. With fishing the principal focus of the Authority's company investment, interests include one of Europe's largest pelagic processing plants, operated by Pelagia Shetland Ltd, and also Shetland Seafood Auctions with its electronic auction system handling seafood for national and international customers.

Shetland Seafood Auctions Ltd offers an onshore weighing and grading service to vessels which is popular for high value species such as monkfish, cod, lemon sole, megrim, halibut, turbot and squid. Advance landing information is made available on the auction company's website on a daily basis, up to 18 hours before each day's market, which allows buyers to

plan in advance of the sale. Information on daily fish prices and weekly box landings is also updated after each auction.

Imports and Exports

Ferries and freight remain a cornerstone of trade through the port and one of the Authority's principal activities is to support the lifeline link for Shetland to the Scottish mainland. The current generation of ro/ro ferries on the Northern Isles route are not operationally constrained at Lerwick which can operate in all weathers. The Holmsgarth Ferry Terminal provides excellent facilities for passengers including a modern Terminal Building and elevated overhead walkway linking the ships to the Terminal Building.

Serco NorthLink Ferries Ltd operates a nightly passenger/freight ferry and a freight only ro/ro service to Aberdeen and Orkney. Other lifeline services to Shetland include import of fuel oils for the islands which are mainly to a private depot within the port but the fuel for the electricity generating station and marine gas oil to Greenhead Base both come in over the Authority's quays.



Aerial view of Lerwick Harbour
©John Coutts





Daily overnight lifeline ferry and freight operations are a cornerstone of trade through the port
©Rory Gillies

Cruise ships

As the main seaway to Shetland's many visitor attractions, Lerwick Harbour makes a major contribution to Shetland's important tourism industry. Lerwick continues to be one of Scotland's top cruise destinations attracting a large number of cruise ships. The cruise sector is a growing market for the Authority and it is working hard to ensure Lerwick is seen as a destination of choice for as many ships as possible to continue to bring benefits to Shetland as a whole.

Located at 60 degrees north and between the Atlantic and North Sea, Lerwick is a key destination in itineraries for cruises in northern European waters, round-Britain, sub-Arctic exploration, expedition cruising, special interest voyages and repositioning to the USA.

Smaller cruise ships can berth at Victoria Pier in Lerwick town centre and there are now two berthing options for mid-sized cruise ships up to 240 metres long at either Holmsgarth 5 or the recently completed Mair's Pier. Larger ships anchor in the shelter of the harbour with a short tender



Lerwick is seen as a destination of choice for the cruise industry
©Millgaet Media

distance of 0.3 nautical miles to a modern floating landing stage at Albert Dock in the Town Centre.

Cruise bookings for 2020 will potentially break three previous records with 105 ships scheduled to call, an estimated 92,000 passengers and over 4M gross tonnes of shipping. Lerwick and Shetland's reputation as a must-see destination is as strong as ever, with a number of tourism accolades received in 2019 and bookings up to four years ahead.

Lerwick's experienced and dedicated Meet & Greet team, supported by the Port Authority, provides a warm welcome to all passengers and crew. The service also includes orientation leaflets and maps, traditional Shetland music on the quayside, as well as a free shuttle bus service to-and-from the town centre for passengers on ships berthed at the port's Holmsgarth facilities.

Summer visitors

The excellent facilities at Lerwick Harbour include floating pontoons situated in the Small Boat Harbour at the heart of the town centre which continue to



2020 is set to be a record for the highest number of cruise ship visits in a season to Lerwick
©John Coutts



Over 500 yachts visit Lerwick annually enjoying the modern berthing facilities in the town centre.
©Melanie Henderson

be appreciated by visiting yacht crews and provide a great meeting place for entrants in annual local and international events. Over 500 yachts visit Lerwick in a season.

The majority of visitors can enjoy town centre berthing where pontoons give access at all stages of the tide. Larger yachts can use the harbour wall and there are no restrictions on size of craft. During midsummer, the port is host to a major yacht race – the Bergen Shetland Race. First held in 1987, this event attracts over 40 yachts, in either fully crewed or double-handed classes.

Lerwick prides itself on being a tall ship friendly port. Throughout the season, the port welcomes many interesting and beautiful sail training vessels of all sizes which provide an interesting focal point in the town centre and attract a lot of attention. Open deck events are well received and give visitors an insight into the workings of these beautiful ships. Norwegian Tall Ship Statsraad Lehmkuhl is a regular visitor and now proudly calls Lerwick its second 'home' port.



The semi-submersible DeepSea Aberdeen and OSV Caledonian Victory taking advantage of the sheltered deep water anchorages that are available at Lerwick
©Ryan Leith

Lerwick Harbour successfully hosted The Tall Ships Races in 1999 and 2011. There is strong local support to see the event return and a bid for Lerwick to be a host port again in 2023 is being considered.

Health, Safety, Environment and Quality Management System

All business activities are undertaken and regulated in such a way that safeguards the harbour, its users, the public and the environment are in compliance with standards ISO 9001:2015, ISO 14001:2015 and ISO 45001:2018 (the complete quality, environmental and occupational health and safety management suite of ISO standards) and the Port Marine Safety Code. Substantial time has been invested in redesigning the port's Health, Safety, Environment and Quality system to meet business needs and requirements placed on the Authority.

The Authority has a clear commitment to full compliance with the UK Port Marine Safety Code and recognises its accountability for marine operations and the safe and efficient running of the port.



QUAYSIDE TERMINAL FACILITIES

GLOBAL LOGISTICS



**NEW TERMINAL OPENING
2020 AT HOLMSGARTH**

ABERDEEN | BERGEN | GLASGOW | HUMBERSIDE | INVERNESS | MILTON KEYNES | MONTROSE | ORKNEY | RUSHDEN | SHETLAND | WOOTTON | YORK

T: 01595 692869 | www.streamlinegroup.co.uk



Port Facilities:

ABSORBENTS / SPILL KITS (OILS AND CHEMICALS)

24-hour Spill Response.

TWMA Ltd.

Tel: 01595 840431

Web: www.twma.co.uk

ANCHORAGE

Tidal effects are minimal. Ample anchorages in sheltered water for any size of vessel in North and South Harbour areas, subject to prior consultation with the Port Authority.

Inner South Harbour anchorage depth minimum 10m within a radius of 300m. Brei Wick anchorage depth 15m – 25m. Anchorage in North and South outer Harbour areas in depths from 20 to 50m+.

ANIMALS LAIRAGE

Serco NorthLink Ferries Ltd provides lairage facilities for animals awaiting shipment to the mainland. The purpose built facility incorporates permanent external pens; a covered area housing pens and welfare facilities; loading / unloading bays for vehicular access and provision of external temporary sheep pens with a hold capacity of up to 3000.

Serco NorthLink Ferries Ltd.

Holmsgarth Ferry Terminal, Lerwick, ZE1 0PW

General Enquiries Tel: 0845 6000 449

Freight line Tel: 0845 6060 449

BERTHING

Berth Name	Length (Metres)	Min. Depth A/S (Metres)
Dales Voe	127	12.5 – 9.5
Greenhead Base 1-2	215	6.0
Greenhead Base 3	120	8.0
Greenhead Base 4-6	348	9.0
Greenhead Base 7	102	9.0
Gremista N	60	5.2
Gremista W	57	6.6 – 7.0
Gremista S	80	7.2 – 8.5
Gremista E	70	8.5 – 6.5
Gremista Inner	35	9.0
Fishmarket Quay	189	6.2
Mairs Pier N	133	8.6 – 6.2
Mairs Pier W	222	6.3 – 8.6
Mairs Pier end	30	6.8
Mairs Pier E	275	9.0 – 7.1
Mairs Pier S	146	5.2 – 9.0
Holmsgarth 1	170	5.2
Holmsgarth 2 – Ro-Ro	150	11.7 – 8.0
Holmsgarth 3 – Ro-Ro	155	7.7 – 12.5
Holmsgarth 4	124	7.2
Holmsgarth 5	163	9.2
Holmsgarth 5 end	21	8.7
Morrison Dock E	131	5.0 – 8.0
Morrison Dock N – X Berth	46	3.2 – 5.0
Morrison Dock W	147	4.0 – 3.2
Shearers W – Ice Berth	52	6.7 – 3.0
Shearers N	70	5.7
Freefield N – Hay & Co	52	5.3 – 2.8
Freefield E – Hay & Co	66	0.5 – 5.3
North Ness Jetty	21	4.1
Malakoff Pier	12	3.5
Laurenson Quay - Fishmarket	87	4.6
Alexandra Wharf N	63	4.4 – 5.5
Alexandra Wharf S	75	5.5 – 4.2
Spur Jetty N	38	7.0 – 4.2
Spur Jetty S – Bressay Ferry	27	3.7
Albert Wharf N	57	3.7
Albert Wharf S	126	2.5 – 3.7
Victoria Pier N	122	7.6 – 2.5
Victoria Pier W – IVPA	61	9.0 – 7.6
Victoria Pier E – OVPA	91	7.8 – 10.7
Victoria Pier S	140	1.5 – 7.8
Breakwater	38	5.3
Heogan Middle – Fish Landing	30	8.0
Heogan South	30	5.0

Damen: Shipbuilding excellence since 1927.



RENEWABLES SERVICE VESSEL 3315

A boat. A ship. A vessel. Whatever her job, whatever her purpose, we take pride in building you something useful, something good.

DAMEN.COM

DAMEN



BUNKERING

Bunkering points at many berths including deep water berths.
Other supplies by main oil companies - see useful contacts.

CARGO/MINERALS HANDLING

Clarksons Port Services.

Greenhead Base, Lerwick ZE1 0PY
Tel: +44 (0) 1595 695717
Email: lerwick@clarksons.com
Web: www.clarksons.com

GAC Shipping (UK) Ltd.

Greenhead Base, Lerwick, ZE1 0PY
Tel: +44 (0) 1595 880463
Web: www.gac.com

Peterson (UK) Ltd.

Greenhead Base, Gremista, Lerwick, ZE1 0PY
Tel: 01595 694242
Web: www.energylogistics.onepeterson.com/en
Discharge by Grab; loading by Elevator.

Serco NorthLink Ferries Ltd.

Holmsgarth Ferry Terminal, Lerwick, ZE1 0PW
General: +44 (0) 845 6000449
Freight line: +44 (0) 845 6060449
Web: www.northlinkferries.co.uk

Tulloch Developments Ltd.

Gremista, Lerwick, Shetland, ZE1 0PX
Tel: +44 (0) 1595 741427
Web: www.tullochdev.co.uk
Ship charter, loading & discharging by excavator, delivery with lorries.

CONTAINERS

Lift on/Lift off. Ro/Ro facilities.

CRANE HIRE

Peterson (UK) Ltd.

Greenhead Base, Gremista, Lerwick, ZE1 0PY
Tel: 01595 694242
Web: www.energylogistics.onepeterson.com/en

100Te MHC 130S Harbour Crane - fleet of mobile/all-terrain cranes from 100Te to 220Te - other crane types/capacities available upon request.

Streamline Shipping Group.

Garthspool Road, Lerwick, ZE1 0NY
Tel: 01595 692869
Web: www.streamlineshippinggroup.com

220T Grove mobile crane available.
Other capacity mobile cranes available on request.

Tulloch Developments Ltd.

Gremista, Lerwick, ZE1 0PX
Tel: 01595 741427
Web: www.tullochdev.co.uk

55 & 70 tonne mobile cranes; up to 40 tonne/metre crane trucks;
larger cranes and crawler available on request.

DEEP WATER BERTHS

Up to 12.5 metres.

ELECTRIC POWER

Public supply available.

FIREFIGHTING

Hydrants on all quays. Local fire service.

FRESH WATER

Available at all berths.

MAXIMUM SIZE OF VESSELS

240 metres alongside (weather dependant). Unlimited at anchorage.

MOORING

By arrangement with Lerwick Port Authority on request.



Lerwick Harbour's busy annual calendar includes, popular sailing events, regattas and races
©Ryan Leith

NAVIGATION CHANNELS

Refer to Admiralty Charts 3271, 3272 and 3270.

NAVIGATION LIGHTS

Refer to charts and admiralty list of lights.

OFFSHORE SERVICE BASE

Peterson (UK) Ltd.

Greenhead Base, Gremista, Lerwick, ZE1 0PY
Tel: 01595 694242
Web: www.energylogistics.onepeterson.com/en

PILOTAGE

Pilotage is compulsory for some categories of ships - for example, passenger vessels, oil tankers over 1600 GT, ships carrying certain explosives and vessels towing or under tow or manoeuvring with difficulty. Ships of over 3000 GT are obliged to take a pilot through the Inner Harbour.



Clarksons
Port Services

**Project Logistics, Freight Forwarding,
and Ship's Agency Services**

**Available 24/7, all year round to support
Scotland's Marine Industry**

Our Port Services team provides the highest standards of support with 24/7 attendance to Vessel Owners, Operators and Charterers at a wide range of strategically located ports.



Block 2, Greenhead Base, Gremista,
Lerwick, Shetland ZE1 0PY
Lerwick@clarksons.com
Tel: 01595 695 717

www.clarksons.com



MARITIME PROTECTION SOLUTIONS

*Your Security
is our Priority*



Maritime Protection Solutions Limited (MPS) is an SIA Approved specialist maritime security company endeavouring to provide quality security services to its customers throughout Scotland.

For further information regarding the various services we offer, please contact Steve Gotts or Stuart McCulloch.

Your Security is our Priority because Compromise is not an Option



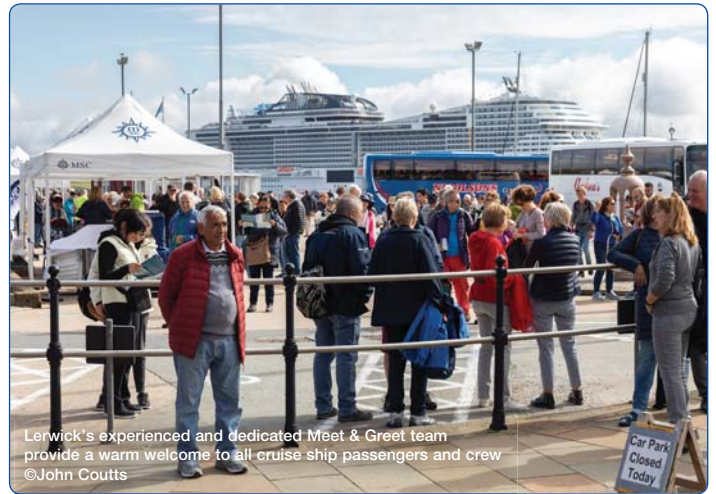
Maritime Protection Solutions Limited.
11 Bon Accord Crescent, Aberdeen, AB11 6DE
Tel: 01224 945680 Email: security@marprot.com
Web: www.marprot.com



Lerwick Pilot Vessel Knab escorting Le Champlain into Lerwick
©Ryan Leith



Midwater pelagic trawler, Serene LK297, arriving at Lerwick.
©Ryan Leith



Lerwick's experienced and dedicated Meet & Greet team provide a warm welcome to all cruise ship passengers and crew
©John Coutts

SCOTLAND'S LEADING COASTAL HYDROGRAPHIC SURVEY COMPANY



**...our expertise
your advantage**

Aspect

Land + Hydrographic Surveys Ltd

CHARTERED SURVEYORS



- Renewable Energy Site Surveys
- Cable & Pipeline Route Surveys
- Asset Inspection Surveys
- Geophysical & Geotechnical Surveys
- Crew Transfer / Charter Vessel

WEB: www.aspectsurveys.com

TEL: + 44 (0) 1294 313 399

EMAIL: mail@aspectsurveys.com



HIGHLAND FUELS

- Fuel supply at locations throughout Scotland by pipeline or our road tanker fleet
- Competitive pricing
- AUS40 and lubricant deliveries
- One phone call approach
- Dedicated team available 24/7

Highland Fuels Ltd have provided the industry and the marine sector with outstanding service and competitive prices for fuel for over 60 years. Offering road tanker deliveries from our depots around Scotland with bulk pipeline deliveries in Montrose, Lerwick, Scapa and Ullapool. We provide a professional, reliable service and strive to provide the most competitive prices.

T: 0800 224 224 E: marine@highlandfuels.co.uk

www.highlandfuels.co.uk

POLICING

No dock police. Security services available.

Police Scotland.

Market Street, Lerwick, ZE1 0EP
Tel: 101

Maritime Protection Solutions (MPS) Ltd.

11 Bon Accord Crescent, Aberdeen, AB11 6DE
Tel: 01224 945680
Web: www.marprot.com

SHIPS STORES

Adequate services by various local firms.

TIDAL

The mean tidal range is 0.7 metres neaps and 1.7 metres at spring tides. The extreme range is only 2.2 metres.

TOWAGE

Harbour Tugs available. 21.4 tonne and 24 tonne bollard pull.
Lerwick Port Authority, Albert Building, Lerwick, ZE1 0LL
Tel: 01595 692991 Web: www.lerwick-harbour.co.uk

UNDER KEEL CLEARANCE

A minimum under keel clearance of 0.5 metres should be maintained at all times when manoeuvring within the harbour area.

VHF RADIO COMMUNICATION

Lerwick Port Control VHF Channels 12 and 16.

WASTE FACILITIES

Covered rubbish skips for ship's domestic waste are strategically placed to cater for each dock/pier. Hazardous/Special waste facilities are available through Shipping Agents.

WEIGHBRIDGE

Public Weighbridge operated by Lerwick Port Authority, located at Holmsgarth, Lerwick.

OCEAN KINETICS

Committed to Quality,
Dedicated to Engineering

T 01595 696777 E info@oceankinetics.co.uk W oceankinetics.co.uk



Underwater Services including Diving and ROV

Underwater Welding to
DNV & Lloyds Standards
Design, Supply &
Installation of C.P. Systems

Marine Engineering Workshops in Aberdeen & Shetland

Engineering Stores with
Dedicated Inspection & Testing
Facility in Shetland
Full Design, Fabrication, Machining
Installation & Commissioning

Decom & Offshore Renewables

Onshore & Offshore Support
Including Underwater
& Rope Access



empowered by Achilles



empowered by Achilles





NORTHERN DREDGING



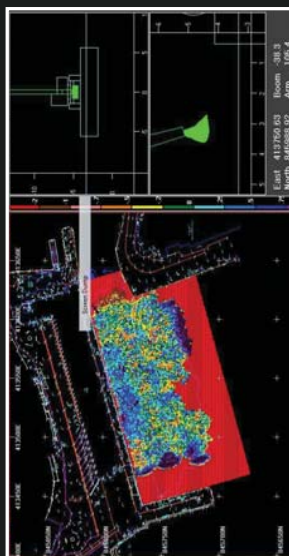
Stone placement
by 3D DGPS

Positioning by 3D
Dredge System

Cofferdam
removal 2018



Addition for 2019:
"6565" 500 T Spud
leg barge & 125 T
long reach excavator



Edinburgh | **Contact:** Neville Harrison | **M:** 07393 586352
E: office@dredging.co.uk | **www.dredging.co.uk**