

Ports of Scotland

Yearbook



42ND EDITION

2023



Land & Hydrographic Surveys Ltd
CHARTERED SURVEYORS

ONSHORE | NEARSHORE | OFFSHORE

HIGH RESOLUTION MULTIBEAM BATHYMETRIC SURVEYS

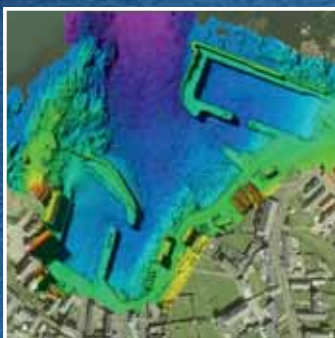
SIDE-SCAN SONAR • MAGNETOMETER / UXO SURVEYS

VIBROCORE / GRAB SAMPLING & ANALYSIS • GEOPHYSICAL SURVEYS

UAV IMAGERY / LiDAR • BIM / REVIT MODELLING • DIGITAL TWIN

MARINE STRUCTURE INSPECTION • RENEWABLE ENERGY SITE SURVEYS

ROV / CABLE & PIPELINE ROUTE & DEPTH OF BURIAL SURVEYS



WEB: www.aspectsurveys.com

TEL: + 44 (0) 1294 313 399

EMAIL: mail@aspectsurveys.com

NORTHWARDS

WAY AHEAD

Providing the right solutions for our customers' transport needs



The established, high-quality freight, haulage and maintenance operator in the Northern Isles.

- Freight shipping, cargo handling, road haulage and distribution
- Direct connections into Scandinavia and Europe
- Next day pallet deliveries collections throughout the UK
- Daily overnight service between all depots
- HGV workshop services
- Temperature controlled transportation
- Livestock movement
- Ships agents

Contact our depots:

Shetland
01595 694452

Orkney
01856 873030

Aberdeen
01224 213215

Scrabster
01847 892052

Inverness
01463 233299

Glasgow
01236 728108

info@northwardsltd.co.uk
northwardsltd.co.uk

Shetland | Northwards Ltd
Anderson Base, Gremista, Lerwick ZE1 0PX



BULK MATERIAL HANDLING SPECIALISTS



CONVEYORS | BULK LOADERS

WHEELED LOADERS

PARTS | SERVICE

13 UK SERVICE DEPOTS



TEREX FINLAY | TELESTACK



OFFERING THE FULL RANGE FROM HYUNDAI



OVER £6M OF STOCK | OVER 75 ENGINEERS



3 STRATEGICALLY POSITIONED IN SCOTLAND

MOLSON
Green

molsongroup.co.uk/green

Molson Group Ltd, Lochill Industrial Estate, Doune, Stirling FK16 6AD

FOR MORE INFORMATION
01179 820 123

info@molsongroup.co.uk



Ports of Scotland[®]

Serving Industry & Commerce

Ports of Scotland[®] is owned and published by Maritime Publications Ltd.

Tel: 01877 330519

Email: info@portsofscotland.co.uk

Web: www.portsofscotland.co.uk

Find us on  



Cover photograph
Aerial view of Port of Cromarty Firth
©New Wave Images

Price £30.00

Section 4
Highlands & Islands
Pages 190-313

Section 3
North East
Pages 124-189

Section 1
South West
Pages 4-57

Section 2
South East
Pages 58-123

Section 5
Information & Features
Pages 314-320

Aberdeen	127
Arbroath	112
Ardishaig	41
Ardrossan	16
Ardeenish	267
Ayr	32
Banff	179
Berwick upon Tweed	104
Braefoot	79
Buckie	183
Burghead	189
Burntisland	76
Cairnryan	28
CalMac Harbours	56
Campbeltown	46
Clydebank	26
Corpach	245
Cromarty Firth	203
Cullen	188
Cullivoe	306
Dundee	94
Eyemouth	102
Fairlie	38
Findochty	189
Fraserburgh	164
Gairloch	254
Girvan	30
Glasgow	14
Gourdon	180
Grangemouth	80
Greenock	8
Helmsdale	256
Holy Loch	42
Hopeman	188
Hound Point	79
Hunterston	18
Invergordon	203
Inverkeithing	101
Inverness	193
Johnshaven	180
Kallin	267
Kinlochbervie	253
Kirkcaldy	78
Kirkwall	276
Kishorn	261
Kyle of Lochalsh	254
Leith	72
Lerwick	292
Leverburgh	267
Lochinver	252
Lochmaddy	267
Loch Fyne	44
Loch Ryan	29
Lossiemouth	181
Lyness	284
Macduff	175
Mallaig	248
Miavaig	267
Methil	77
Montrose	115
Nigg	223
Oban	48
Perth	107
Peterhead	151
Portknockie	188
Portree	257
Portsoy	180
Rosehearty	179
Rosyth	63
Scalloway	304
Scapa Flow	282
Scrabster	236
Stonehaven	181
Stornoway	268
Stromness	288
Sullom Voe	308
Tarbert	43
Tobermory	258
Troon	35
Uig	256
Ullapool	264
Whitehills	189
Wick	232

Whilst every care has been taken to ensure the accuracy of the information in this publication Maritime Publications Ltd, (trading as Ports of Scotland) it's shareholders, directors, employees or anyone acting on their behalf do not accept responsibility for any errors, omissions, misrepresentation or misinterpretation. Port users are recommended to verify with the respective Port and Harbour Authorities that the information given in this publication is correct and remains valid for the time of and intended use. Information in the advertisements should be verified with the advertisers. No part of the publication may be reproduced in any form or by any electronic or mechanical means including information storage and retrieval systems without the written permission of the publishers.

© 2022/23 Maritime Publications Ltd. All rights reserved.





EXCELLENCE IN LOGISTICS



PSG are the LEADING PROVIDER of LOGISTICAL SUPPORT SERVICES to OIL & GAS, RENEWABLE ENERGY and DECOMMISSIONING PROJECTS being undertaken in PORT OF CROMARTY FIRTH.

- \ **MARINE LOGISTICS**
- \ **QUAYSIDE SUPPORT SERVICES**
- \ **HEAVY LIFT & TRANSPORT SERVICES**
- \ **PORT AGENCY**



info@psg-inv.com

01349 856410

psg-inv.com

UNITS 20 & 21 INVERGORDON SERVICE BASE, SHORE ROAD, INVERGORDON IV18 0EX



Cromarty Firth



PORT AUTHORITY
Port of Cromarty Firth
Port Office
Shore Road
Invergordon
IV18 0HD

Tel: 01349 852308
Email: port@pocf.co.uk
Web: www.pocf.co.uk

PRINCIPAL OFFICIALS

Chief Executive: Bob Buskie
General Manager: Calum Slater
Finance & Commercial: Richard Fea
Strategic Business Development: Joanne Allday

Invergordon Location: Latitude 57° 41'N
Longitude 04° 10'W

Port of Cromarty Firth (PoCF) is the largest Port in the Highlands and one of the deepest, most sheltered ports in the country. It is a leading facility for offshore renewable energy projects, a primary location for oil rig Inspection, Repair and Maintenance (IRM), subsea work and Scotland's busiest cruise port. The Port offers:

- Sheltered deep water, accessible 24/7/365.
- No tidal restrictions.
- Hub for offshore renewable energy projects, having supported the 588MW Beatrice Offshore Windfarm, 950MW Moray East Offshore Windfarm, 50MW Kincardine Floating Offshore Windfarm and Seagreen Offshore Wind Farm
- Leading European facility for rig IRM and subsea contracts, having completed more than 700 rigs movements and handled over 900 subsea projects.
- Experienced decommissioning port, with all necessary licences in place.
- A world-class supply chain experienced in onshore and offshore energy projects.
- Top Scottish cruise port by passenger numbers.
- Established port for cargo imports and exports.



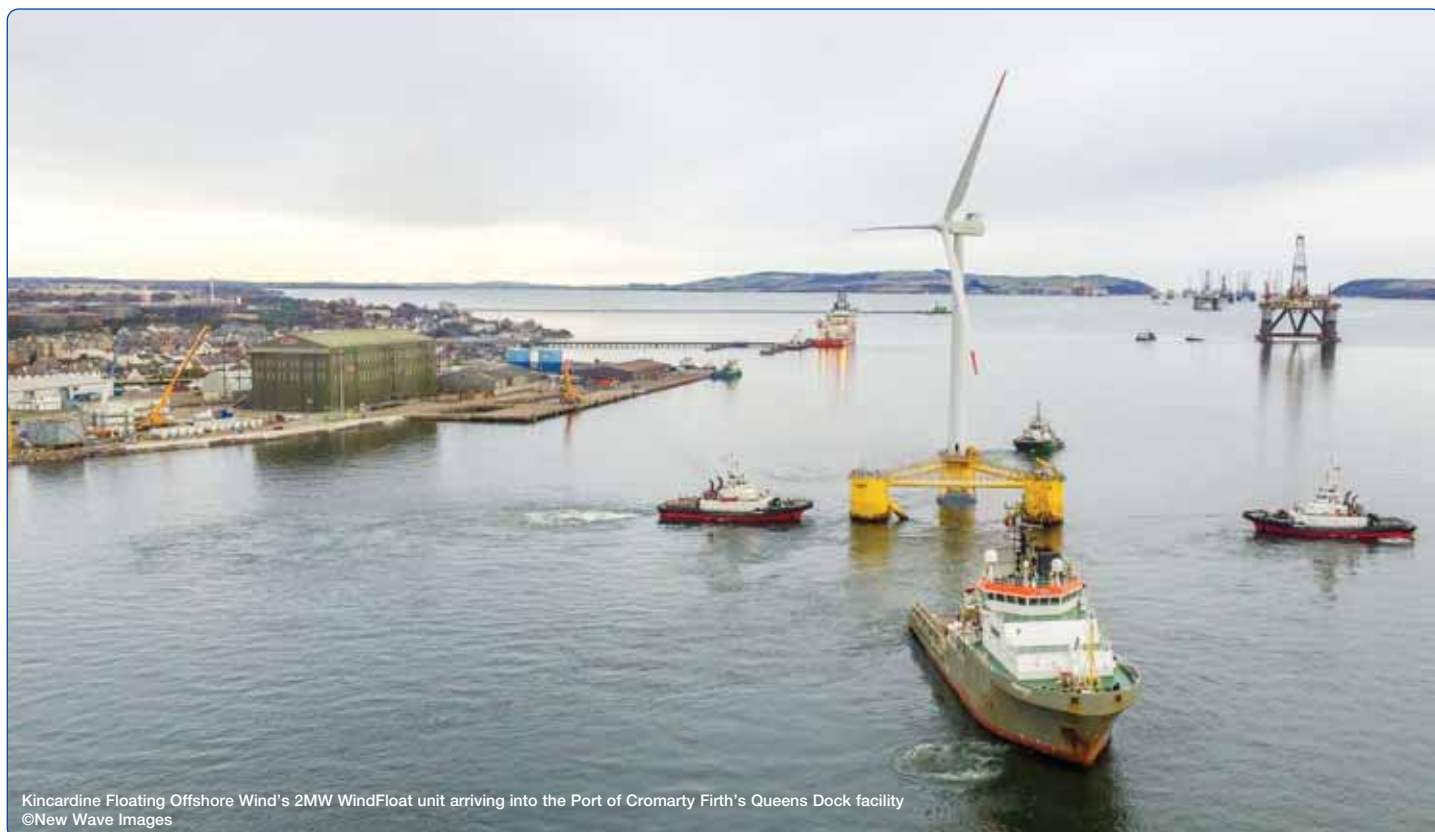
Port of Cromarty Firth is a hub for offshore renewable energy projects

PoCF is the north of Scotland's principal marine engineering hub. It has established itself as a strategic site for offshore wind developments and remains one of Europe's leading facilities for oil rig IRM and subsea projects. The Firth's sheltered waters provide safe anchorages for the storage of rigs and vessels between projects.

The Cromarty Firth features a world-class supply chain, offering invaluable expertise to the renewable energy, oil & gas, decommissioning and cruise industries and supplying the necessary skills and experience to successfully complete major engineering projects on the largest marine structures.

The Port's recent Phase 4 development; a £31m expansion, has now opened after being named by the Princess Royal as Quay West providing over 90,000m² laydown area complete with heavy lift capabilities and a 372m quayside at 12m draft.

This space and the Firth's sheltered deep waters mean that the Invergordon Service Base is capable of accommodating the biggest offshore floating wind structures and largest support vessels, including rigs, jack-up vessels, offshore production platforms and subsea structures.



Kincardine Floating Offshore Wind's 2MW WindFloat unit arriving into the Port of Cromarty Firth's Queens Dock facility
©New Wave Images





Royal Caribbean's Anthem of the Seas cruise ship berthed at Port of Cromarty Firth
©New Wave Images

Port owned facilities include three berths fully accredited for decommissioning work, capable of taking vessels up to 300m in length alongside and 13.5m draft and a quayside load transfer capability of 12,000 tonnes.

The cruise sector has been a growing market for the Port and generated significant benefits to the Highland economy. The 2022 season saw the Port welcome more passengers than any other Scottish port. 113 ships and 180,000 passengers visited; generating an estimated £18 million for the wider regional economy.

Leading Offshore Energy Hub:

PoCF was created over 45 years ago to service the oil & gas industry and ensure the region benefitted from the North Sea energy boom, while effectively utilising the sheltered deep waters of the Cromarty Firth. The oil & gas sector has long been at the core of the Cromarty Firth's business, due to its proximity to the North Sea, world class facilities and significant supply chain expertise.

The Port now plays a key role in wider North Sea energy developments, including the growing Scottish offshore renewables sector. In recent years there has been a substantial increase in offshore wind activity in the Cromarty Firth and the infrastructure expansions at PoCF have been closely aligned to these opportunities. The recent ScotWind announcements should see this sector continue to develop over the longer term.

The Port was utilised as a principle marshalling facility for the jacket foundations as part of SSE's Beatrice Offshore Windfarm and supported the EDPR Moray East development with the storage and marshalling of subsea pin piles. PoCF has also been involved in the storage of jacket foundations for the Seagreen windfarm and the dismantling and storage of the Kincardine floating windfarm demonstrator.

A number of local supply chain companies have been involved in the offshore wind activity at the Port, building valuable experience and expertise which will be utilised within the next round of Scottish projects and create sustainable local employment opportunities.



PoCF remains one of Europe's leading facilities for oil rig IRM and subsea projects

Components for the 950MW Moray East Offshore Windfarm arrive into the Cromarty Firth, escorted by the Dalmore Pilot Boat
©New Wave Images



Coastworks

workboats, tugs & barges



8 Allanton Park Terrace
Fairlie, Ayrshire KA29 0AW
T: +44 (0) 1475 568 572
F: +44 (0) 1475 568 153

Our fleet of workboats, pontoons, spudleg, flattop crane and excavator barges are available for charter to the dredging, marine construction, harbour maintenance and renewable energy industries throughout the UK and Europe.



E: info@coastworks.co.uk / www.coastworks.co.uk





PORT OF CROMARTY FIRTH

**NIGG OIL
TERMINAL**

**NIGG
ENERGY
PARK**

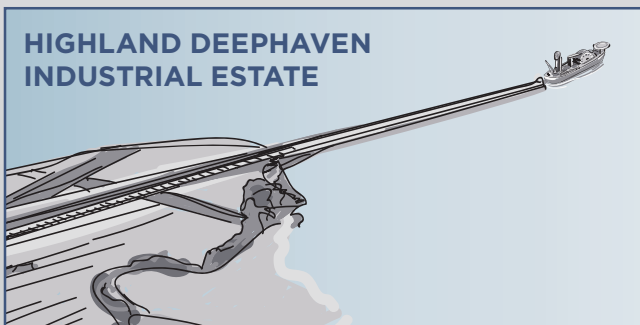
SALTBURN PIER

**ADMIRALTY
PIER**

**INVERGORDON
SERVICE BASE**

ARTIST'S IMPRESSION.
NOT TO SCALE.

**HIGHLAND DEEPPHAVEN
INDUSTRIAL ESTATE**





ONE PORT FEATURING:

- › APPROX. 4,000m OF QUAYSIDE
- › DRY DOCK
- › WET DOCK
- › 1km PIPE SPOOLING QUAY
- › SHELTERED ANCHORAGES
- › LOCAL SUPPLY CHAIN
- › PILOTAGE SERVICES
- › WAREHOUSES, WORKSHOPS, LAYDOWN
- › SCOTLAND'S LEADING CRUISE PORT

We are the largest port in the Highlands and one of the deepest, most sheltered ports in the UK.

For more than 45 years we have successfully managed, developed and grown this national marine asset and strategic renewable energy hub, to create a sustainable pipeline of supply chain and employment opportunities.

**To find out more information,
visit www.pocf.co.uk**

**SMART, SECURE, SUSTAINABLE
OPEN TRUST PORT**

ECOSSE MARINE

supply@ecossemarine.com

+44 (0)1324 624492

www.ecossemarine.com

**KEY SUPPLIERS TO THE
OFFSHORE RENEWABLES,
DEFENCE, AQUACULTURE,
CRUISE AND COMMERCIAL
MARINE SECTORS.**

**PROVISIONS, DECK & ENGINE
CABIN CONSUMABLES.**

**LOGISTICS AND DEDICATED
DELIVERY TO VESSEL SERVICE.**

Solutions delivered above & below the waves!

In order to provide customers and developers with a choice of suppliers and facilitate increased collaboration, the Port operates an 'Open Port' philosophy. This approach allows competent companies to set up and manage projects from Port-owned facilities to maximise choice and competitiveness for visiting customers.

The established supply chain within the Cromarty Firth has a significant track record in offshore energy projects, including logistics specialists, PSG Marine & Logistics Ltd, and international shipping agent, Clarksons. Together, the companies provide an integrated solution from installation to operational maintenance and continuing through to decommissioning. This 'Open Port' philosophy has benefitted customers including SSE, EDPR, Maersk, Transocean and TechnipFMC.

Ancillary support organisations based in the Firth include specialists in rope access, manpower provision, heavy lifting, haulage, scaffolding services, underwater welding and inspection, tank and vessel cleaning, specialist waste handling, and industrial painting.

A full service matrix can be downloaded at
<https://pocf.co.uk/supply-chain/>

**the
seafarers'
charity**

**Doing more for
seafarers. And doing
it even better.**

At The Seafarers' Charity we've been improving the lives of seafarers and their families for more than 100 years, starting as the King George's Fund for Sailors in 1917.

**To learn more or to support
our work, visit:**
www.theseafarerscharity.org



The Seafarers' Charity (Seafarers UK, formerly King George's Fund for Sailors) is a Registered Charity, no. 226446 in England and Wales, incorporated under Royal Charter. Registered in Scotland, no. SC038191. Registered Office: 8 Hatherley Street, London SW1P 2QT.

Registered with



Dalmore Pilot Boat
©New Wave Images

Facilities Accessible with no Tidal Constraints:

Invergordon Service Base

This strategically important Port-owned facility comprises 45 acres of operational land with more than 800 metres of heavy load-bearing quayside at depths up to 13.5 metres below chart datum. Fabrication and storage sheds are available for rent and are capable of handling large scale modular fabrication. The new Phase 4 development provides an additional 218 metres of quayside and 11 acres of laydown space. This project was part financed by Highlands and Islands Enterprise (HIE) and the European Regional Development Fund (ERDF) Programme.

There are transit sheds for quayside storage, with high quality hard standing adjoining the quays. Invergordon Service Base offers two heavy lift pads and the Berth 5 quayside has a 12,000-tonne load transfer capability. The majority of the site is fully permitted for decommissioning work. Safety and security are paramount, the site is fully serviced and security classified under the International Ship and Port Facility Security Code (ISPS). Marine gas oil and water is piped to quayside or can be supplied by road tanker.

Port of Cromarty Firth offers a world-class supply chain experienced in offshore energy projects
©New Wave Images





Saltburn Pier is capable of taking vessels up to 300 metres in length

The Cromarty Firth has a world-class supply chain, with more than four decades of experience in repairing and maintaining oil and gas structures such as jackup rigs and semi-submersibles - in fact the TW58 was the first rig to come into the Firth for repairs, over 40 years ago. More than 700 rig and 900 subsea visits have been handled by the supply chain since. The leading engineering capabilities and skilled workforce means that the local supply chain is now able to support major Scottish offshore wind projects.

Saltburn Pier

This Port-owned facility is an L-head jetty with three setback linked mooring dolphins. The south berth has 11.0 metres of water depth below chart datum and is capable of taking vessels up to 300 metres in length. The north berth has a depth of 6 metres below chart datum and is ideal for vessels up to 85 metres LOA. It is serviced by a piled deck one kilometre in length with back parking land.

Facilities include piped water supply and a dedicated electrical sub-station. Close by is the Cromarty Firth Industrial Park, comprising 1,000 acres of designated land with good road access.

The recent investment by PoCF includes Heavy lift capabilities at the Invergordon Service Base ©Scotavia Images



Privately-Owned Facilities:

Highland Deephaven

This facility is a former airfield site with a 1-kilometre causeway used for pipe spooling and the potential for cable spooling. The berth has more than 9 metre water depth and 1,000 acres of support land.

TechnipFMC operates a spoolbase from the Highland Deephaven Industrial Estate. This is one of a number of purpose built spoolbases throughout the world, specialising in advanced pipeline fabrication for pipelay vessels servicing the offshore industry.

Recent investments in mooring facilities mean that the berth is able to handle some of the largest subsea vessels, including the M.V. Deep Energy, a vessel primarily designed to handle subsea installation of reeled rigid pipe of up to 18" (460mm) outer diameter.

Admiralty Pier

This is a T shaped pier privately owned by Bannerman Co. Ltd. with two berthing dolphins at each end. It can accommodate vessels up to 345 metres in length and has 10.5 metre water depth over its entire length.

Port of Cromarty Firth is the north of Scotland's principle marine engineering hub ©New Wave Images



Managing your land and marine projects from concept to completion

01475 648778

gary@leapmoor.co.uk

122 Shore Street, Gourrock, PA191QZ

www.leapmoor.co.uk

PROJECT & CONTRACT MANAGEMENT

Delivering projects and adding value

ENGINEERING DESIGN COORDINATION

Challenging design and mitigating project risks

GROUND RISK & ENVIRONMENT

Technical expertise and sustainable solutions

YOUR PROJECT, OUR PROJECT.

Mission to Seafarers Scotland

Grangemouth Seafarer Centre

Open 24/7

(Subject to Coronavirus restrictions)

Contact:

07581 625 941
(text preferred)

chaplain@mtss.scot

www.mtss.scot

Registered charity in Scotland: SCO41938



**Caring for seafarers
around the world**

It is ideal for lay-by and support services with a light crane facility, piped water supplies and adjoining office and parking land. Behind the pier, there are several acres of industrial land, currently leased to oil and gas supply chain companies.

Nigg Oil Terminal

Constructed as part of the Beatrice oilfield, the Nigg Oil Terminal is privately owned by Global Energy Group. It is a T-head jetty consisting of a cargo platform and four linked mooring dolphins.

The facilities can accommodate tankers from 30,000-160,000 d.w.t., up to 290 metres in length, with a water depth of 16.5 metres.

Port of Nigg

This facility was bought in November 2011 by Global Energy Group and is now a leading facility for oil rig IRM, subsea and renewable energy projects. The facility complements that of the Port and has contributed to the overall offering of the Cromarty Firth. In 2015 it successfully completed a quayside expansion programme up to 370 metres in length, with a water depth of up to 12 metres.

Highest Standards of Health and Safety & Security

PoCF has developed a strong health & safety culture and remain committed to not only safeguarding the individuals who work at the Port, but also protecting the sensitive environment of the Cromarty Firth.

With a dedicated HSEQ team, led by a highly experienced Health & Safety Manager, the Port has a commitment to achieving the highest standards of safety performance. PoCF hold certification in ISO 14001 - Environmental Management, 9001 - Quality Management System and 45001 - Occupational Health & Safety.

PoCF has recently achieved a RoSPA Silver Health and Safety Award for working hard to ensure its staff, customers, clients and contractors get home safely to their families at the end of every working day.

A common health and safety regime is in place throughout the Port-owned facilities and the security system is compliant with ISPS. A strict induction policy is in place for all workers and unescorted visitors.

Substantial Environmental Protection

The Cromarty Firth is an area of significant environmental importance, encompassing Sites of Special Scientific Interest (SSSI), Ramsar sites and a Special Area of Conservation (SAC). The Cromarty Firth is an internationally

PoCF plays a key role in growing the Scottish offshore renewables sector
©New Wave Images



important wetland site classified as a Special Protection Area (SPA), with a national nature reserve, and RSPB reserves at both Nigg and Udale Bays.

Environmental sustainability is key to the Port's role as a Trust port, with many different types of species living around the Firth; predominantly birds and marine mammals such as geese, terns, seals and one of the UK's two resident populations of bottlenose dolphins. Port of Cromarty Firth takes its environmental obligations extremely seriously and has an environmental management plan for its activities and a full time Environmental Co-ordinator.

In order to protect the long term future of the Port and to deliver the greatest benefits to customers and stakeholders, Port of Cromarty Firth aims to achieve economic, social and environmental sustainability within the Cromarty Firth, where each element is equally balanced. For over forty years the Port has demonstrated that industry can successfully co-exist with a special marine environment. The Port's performance was recognised by Maritime UK, after being presented with the UK National Sustainability Award for successfully balancing economic, social and environmental sustainability for all of the Port's stakeholders.

Development and Improvement Plans – Phase 4

Port of Cromarty Firth, spanning 46 miles of strategically positioned coastline in the North Sea is a strategic asset to the Highlands and Scotland.

PoCF have made significant infrastructure investments in order to keep pace with the continuing demand for laydown space and quayside availability. The latest expansion – Quay West – is a £31 million investment and offers an additional quayside and laydown area added to the 154 metre quay created under Phase 3. It provides a further 218 metre berth, creating a 372 metre length in total, plus 90,000m² of additional laydown area. This has positioned the Firth as the most logical location for a national offshore wind hub.

Further expansions are proposed in the next 5 years to keep pace with the growth in size and scale of offshore renewable components and to accommodate large scale floating wind projects.

Decades of Experience

The Cromarty Firth, with its sheltered deep waters, has been recognised throughout history as a strategic national asset.

The first full Naval visit came in 1863 and spurred the initial land reclamation by the local laird. In 1906 the jetty was extended and the oil tank farm and



Port of Cromarty Firth is the top Scottish cruise port by passenger numbers





IDI SERVICES

CONTRACT LIFTING & ABNORMAL LOADS

T: 01224 506143

E: ian@idiservices.co.uk

E: Richard.milne@idiservices.co.uk

WWW.IDISERVICES.CO.UK

PROJECT MANAGEMENT | CONTRACT LIFTING | HEAVY HAULAGE | PLANT & EQUIPMENT HANDLING | RIGGING SOLUTIONS
MACHINE & FACTORY RELOCATION | CAD DRAWINGS | INDUSTRIAL DISMANTLING | SHIPPING & EXPORT PACKAGES



IDI SERVICES LTD, KINMUNDY COTTAGE
NEWMACHAR, ABERDEENSHIRE AB21 0US



underground pipes were constructed. 1913 saw the Port become a dockyard port and the Admiralty took control of the waters. It was at this time that Invergordon established itself as a primary engineering facility. The deep water close to the shore allowed two large floating dry docks to be operated and skilled tradesmen moved into the area to establish a naval dock yard. The waters of the Firth provided a safe anchorage for the battleships, heavy cruisers and aircraft carriers of the Home Fleet and a naval presence remained in the Firth until 1993, when the Royal Navy sold the Admiralty Pier and the oil tank farm to Bannerman Co. Ltd. of Tain.

Between the 1950s and the 1970s the Cromarty Firth was a hive of industrial activity. The Invergordon distillery and the British Alcan smelting plant were built, and oil was discovered in the North Sea. Nigg Fabrication Yard was established in 1972 to build the engineering structures necessary to process oil and gas. It was deemed to be in the public interest to encourage further development and exploit the oil reserves, and the Government established the Cromarty Firth Port Authority by an Act of Parliament in 1973.

The establishment of the Port Authority brought the opportunity for the Cromarty Firth to take advantage of the rapidly developing North Sea oil and gas sector and provide support services. The next twenty years were a time of great change in the area, with the development of the Beatrice Oilfield and its connected Nigg Oil Terminal, a pipe coating works, the Invergordon Service Base and the pipe spooling facility at Highland Deephaven. Nigg Fabrication Yard enjoyed twenty five years of success, until the oil price crash in 1998 resulted in the Yard's closure.

That same twenty-year period saw the arrival of cruise ships into the Firth and, as the oil price rebounded to record highs, the number of cruise ships steadily increased as well. In more recent years the decline in the global price of oil led to necessary diversification by the Port, with renewable energy projects and cruise ships increasing in number.

The cyclical nature of different industries underlines the character of most ports. Entrepreneurs come and go, jobs come and go and whole sectors evolve, as markets change and industries move on. There is also a natural ebb and flow to the wildlife in the Firth, with geese sheltering over winter before flying to their feeding grounds, and terns and eider arriving in summer to breed. The only constant is the waters of the Cromarty Firth, the assets that were put into the Trust Port by the Government to be managed in the best way possible for future stakeholders. As the statutory authority

responsible for these assets, Port of Cromarty Firth aims to attract energy projects, tourism, and inward investment to create long-term, sustainable employment and opportunities for the region. As part of this role, PoCF has created the Opportunity Cromarty Firth consortium which is bidding to become one of Scotland's green freeports.

Cromarty Firth Port Authority, trading as Port of Cromarty Firth, is a statutory harbour authority and a Trust Port. It is the custodian of the Firth's waters; responsible for improving, safeguarding and developing the Cromarty Firth as a port, for the benefit of all its stakeholders. This includes responsibility for regulating the movement of all vessels within Port limits to ensure safe navigation, provision of marine and port services associated with the undertaking of the Port's business activities and safeguarding the marine environment in the Cromarty Firth.

Today, Port of Cromarty Firth remains a leading European port supporting the offshore energy industry. It handles a wide spectrum of maritime activities such as offshore wind marshalling and construction, IRM and decommissioning of oil rigs, subsea engineering, bulk cargos, international cruise liners, deep water anchorages and onshore renewables.



Dolphin in the Firth
©Peter Taylor



sales@metecgroup.com

Metec Group are a leading Cathodic Protection manufacturer with sacrificial anode production facilities in Tunisia, and the United Kingdom. The Group boasts a combined galvanic anode weekly capacity in excess of 250 tonnes for aluminium and zinc anode production.

- Sacrificial Anode Manufacture
- Design of CP Systems
- On-Site Surveys & Inspection
- Sacrificial Anode install
- CP Monitoring Systems
- Pre/Post Dive Inspections
- ICCP Systems
- MGPS Anodes



- Offshore Renewable Energy
- Ports & Harbour Construction
- Oil & Gas Rigs
- Ship building and Repair
- Subsea Pipelines
- Subsea Oil & Gas Assets



www.metecgroup.com



Visage House, 2 Shaftsbury Avenue, South Shields, NE34 9PH
Office Telephone: + 44 (0)191 7316010



Port of Cromarty Firth is managed by an appointed Board of seven members plus a Chief Executive. It has no shareholders. 100% of the Port's surplus (profits) are reinvested in improving, safeguarding and developing the Port.

Its primary functions are to manage the safety and security of vessels and people visiting the Firth, improve Port-owned facilities (Invergordon Service Base and Saltburn Pier), to develop opportunities for employment and economic growth and to safeguard the Firth's environment.

Over £55 million has been invested in the Invergordon Service Base in recent years to attract additional business to the area, improve the infrastructure available to customers, enhance local car parking and roads, adapt to the latest security standards, upgrade access procedures, and modernise working facilities through continual improvements including lighting, health and safety and storage. This has secured the Cromarty Firth's reputation as one of the leading industrial and tourism ports in Europe.

Port Facilities:

ANCHORAGES

Port of Cromarty Firth offers a sheltered harbour for vessels either undergoing repairs and maintenance or awaiting further project work.

There are a number of designated sheltered deep water anchorages in the Firth commonly used for vessels and both jack-up and semisubmersible rigs. The seabed provides good holding ground. Swinging anchorages are allocated outside the Sutors in the Moray Firth for vessels awaiting berths and employment.

These anchorage / wet storage areas will be used for floating substructures and possibly small numbers of fully assembled floating turbines in the future, prior to being towed out to windfarm sites for installation.

For more information contact the Port of Cromarty Firth.
Tel: 01349 852308 Email: port@pocf.co.uk Web: www.pocf.co.uk

BERTHING

Berth	Length	Min. Water Depth	Mooring Bollards
1	60m	3.5m	50 tonnes
2-4	288m	10-14m	50-300 tonnes
Queens Dock	150m	9m	50-250 tonnes
Quay West 1	154m	11.2m	50-250 tonnes
Quay West 2	218m	11.4m	80 tonnes
Saltburn Pier South	300m	11m	50-100 tonnes
Saltburn Pier North	85m	5.2m	100 tonnes

Privately-Owned Facilities in the Cromarty Firth

Highland Deephaven	Please contact owners (Tel: +44 1349 831191)
Admiralty Pier	Please contact owners (Tel: +44 1862 892322)
Nigg Oil Terminal	Please contact owners (Tel: +44 1862 851631)
Port of Nigg	Please contact owners (Tel: 44 1862 851700)

BUNKERING

Marine Gas Oil is available by pipeline on Berths 1-4 of the Invergordon Service Base. At all other berths in Invergordon, it is available by arrangement via road tanker or bunker barge.

FRESH WATER

Available on all berths or by barge on request. The rate of delivery from the quayside is 40 tonnes per hour, subject to facility.

LAYDOWN AREA

Laydown Area	Size	Heavy Lift Capabilities
Berth 1	N/a	No
Berths 2-4	10,000m ²	Yes
North Queens Dock	26,000m ²	Yes
Quay West 1 & 2 (Berths 5 & 6)	92,702m ²	<12 tonnes per m ² UDL



Jacket foundations for the 588MW Beatrice Offshore Windfarm positioned at the Invergordon Service Base ©Stratos



Aerial view of Queens dock and the recently completed Quay West

Technology Insight.

THE SMART
PORTS
ALLIANCE

The world's first private member network dedicated to digitalisation and transformation in ports and terminals.

Actionable, objective insights, networking and collaboration to drive stronger performance on your business objectives.

Learn more at: -

www.smartportsalliance.org

FACILITIES

Invergordon Service Base:

Owned and operated by Port of Cromarty Firth (Cromarty Firth Port Authority): deep water alongside quays with dedicated adjoining hard standing areas. Rig mooring systems on No.4 and No. 5 berths and the Queen's Dock. Recognised as one of the prime facilities in Scotland for marshalling large work scopes for the offshore wind industry.

Full supply chain services for subsea and IRM engineering, heavy lifting facilities on the quays and fully serviced fabrication, storage and assembly land. Capability for 12,000 tonne load transfer at Berth 5. Full logistic services on site. Used for rig IRM, subsea engineering, renewable logistics and assembly, decommissioning, cruise liners and general cargo handling.

Saltburn Pier:

Owned and operated by Port of Cromarty Firth: two berths utilised for bulk cargo handling, cruise liner berthing and lay-by up to Panamax size vessels.

Highland Deephaven:

Large business park with pipe spooling facility operated by TechnipFMC, stern mooring onto causeway.

For more details contact +44 1349 831191.

Admiralty Pier:

Owned and operated by Bannerman Co Ltd. Ex admiralty fuelling berth utilised for cargo handling and lay-by.

For more details contact +44 1862 892322.

Nigg Oil Terminal:

A designated petroleum terminal owned by Global Energy Group. The berth, capable of handling Aframax vessels, is utilised for import and export of crude oil, ship to ship transfer and slops processing.

For more details contact +44 1862 851631.



Global Port Services – Bulk Cargo (formerly Highland Stevedoring), operating from the sheltered waters of the Cromarty Firth are the regions leading bulk cargo business, handling the import and export of wood pellets, fishmeal, fish oil, road salt, coal, maize, fertiliser and other bulk cargos to support a range of clients in the industrial and public sectors.

- Port Agency / Ships Agent
- Cargo loading and discharging
- Plant and haulage equipment
- Laydown and storage solutions

BULK CARGO

www.globalportservices.co.uk



Highland Stevedoring a division of Global Port Services (Scotland) Ltd

Tel: +44 (0)1349 855110 Email: bulkcargo@geggroup.com





Quay West provides over 90,000m² laydown area, with heavy lift facilities and a 372m quayside at 12m draft
©New Wave Images

Port of Nigg:

Owned and operated by Global Energy Group: ex oil platform fabrication facility with graving dock and alongside berths on the newly developed Nigg South Quay.

For more details contact +44 1862 851700.

PILOTAGE

Pilotage is compulsory for all vessels 60 metres in length or over, vessels over 40 metres in length carrying over 12 paying passengers, and any vessel carrying hazardous substances.

24-hour pilotage service. Contact Port of Cromarty Firth on +44 (0)1349 852308 / shipping@cfpa.co.uk for more details.

SECURITY

24-hour manned security supported by modern CCTV system fully compliant with ISPS Code.

SERVICE CRAFT

Certificated service craft for crew and staff transfer are available on request.

SHIP TO SHORE TELEPHONES

By arrangement.

STORAGE

Extensive serviced open and undercover storage areas are available with deep water quay access.

12,000 tonne heavy load transfer ability at the Invergordon Service Base.

TIDAL REFERENCE

Chart datum is 2.1 metres below ordnance datum Newlyn.

Mean Low Water springs is 0.7 metres above chart datum.

Mean High Water Springs is 4.3 metres above chart datum.

Spring tide range is 3.6 metres.

PoCF handles a wide spectrum of maritime activities such as offshore wind marshalling and construction



TRAVEL CONNECTIONS

Air Services:

Inverness Airport (40 minutes by road) provides daily scheduled domestic and international services, including direct flights to:

- London (Heathrow, Gatwick and Luton)
- Amsterdam (Schiphol)
- Bristol
- Manchester
- Birmingham
- Dublin
- Belfast City

Road and Rail Services:

All Port and privately-owned facilities are within easy reach of the A9 trunk road which runs northwards to Thurso and south-westwards to Inverness and the central belt.

Invergordon has regular rail services north to Wick and south to Inverness.

VHF RADIO COMMUNICATION

"Cromarty Firth Port Radio" maintains a 24hr VHF Radio listening watch on channel 16 and 11.

WASTE FACILITIES

All facilities are available through vessel agents. Special wastes by prior arrangements.

WEIGHBRIDGE

Fully certificated weighbridge facilities to RHA standard.



SIMPSON OILS LTD
South Quay, The Harbour
Wick KW1 5HA

T: 01955 604444
F: 01955 602316
www.hughsimpson.co.uk
E: enquiries@hughsimpson.co.uk
www.simpsonoils.co.uk
E: enquiries@simpsonoils.co.uk

INDUSTRIAL FUEL SUPPLY • FUEL AND LUBRICATING OIL



Based at the group's Port of Nigg facility, Global Energy Services is a one-of-a-kind service company that delivers multi-disciplined and fully accredited teams to support, repair, and enhance client-owned assets.

With clients ranging across the oil and gas, renewable energy, construction, and infrastructure sectors, GES offers services such as: rope access, alternative access solutions, scaffolding, fabrication, industrial and marine protective coatings, engineering solutions, and project management.



PART OF THE GLOBAL ENERGY GROUP
GEGROUP.COM

Port of Nigg, Nigg
Tain IV19 1QU

Tel: +44 (0)1463 725460
Email: info@gegroupp.com



The 2022 cruise season generated an estimated £18m for the wider regional economy
©New Wave Images



Spirit of Discovery in Invergordon
©New Wave Images



Useful Contacts:

ADMIRALTY CHARTS & COMPASS ADJUSTING

Poseidon Navigation Services Ltd.

Carestown Steading, Deskford, Buckie, Moray, AB56 5TR
Tel: 01542 841245 Mob: 07787 417797
Email: tom.gunn@poseidonnavigation.com
Web: www.poseidonnavigation.com

CATHODIC PROTECTION

Metec Group.

Visage House, 2 Shaftsbury Avenue, South Shields, NE34 9PH
Tel: 0191 731 6010
Email: info@metecgroup.com
Web: www.metecgroup.com

CHANDLERY / SHIPS STORES

Ecosse Marine Ltd.

Unit 8, Forbes Court, Middlefield Ind. Estate, Falkirk, FK2 9HQ
Tel: 01324 624492 Fax: 01324 637144
Email: info@ecossemarine.co.uk Web: www.ecossemarine.co.uk

CONSULTING ENGINEERS

AeCOM

7TH Floor, Aurora, 120 Bothwell Street, Glasgow, G2 7JS
Tel: 0141 248 0300 Email: jill.meikle@aecom.com
Web: www.aecom.com

Atkins Ltd.

2 Atlantic Square, Glasgow, G2 8JQ
Tel: 0141 220 2000 Email: info@atkinsglobal.com
Web: www.atkinsglobal.com

CRANE HIRE

Brimmond Group.

Toftills Avenue, Midmill Business Park, Kintore, AB51 0QP
Tel: 01467 633805
Email: info@brimmond-group.com
Web: www.brimmond-group.com

Global Port Services.

Oilfield Support Base, Shore Road, Invergordon, IV18 0EX
Tel: 01349 855110 Fax: 01349 853076
Web: www.globalportservices.com

Highland Stevedoring Ltd.

Oilfield Support Base, Shore Road, Invergordon, IV18 0EX
Tel: 01349 855110 Fax: 01349 853076
Web: www.globalportservices.com

PSG Ltd.

Units 20 & 21, Invergordon Service Base, Shore Road, IV18 0EX
Tel: 01349 854544 Email: info@psg-inv.com Web: www.psg-inv.com

Stoddart Crane Hire.

Unit 17, Tomich Industrial Estate, Muir of Ord, Ross Shire IV6 7WA
Tel: 01463 871167
Email: info@stoddartcranehire.co.uk
Web: www.stoddartcranehire.co.uk

DIVING / MARINE CONTRACTORS

Caldive Ltd.

18 High Street, Invergordon, IV18 0ET
Tel: 01349 853688 Email: admin@caldive.co.uk
Web: www.caldive.co.uk

Ross-Shire Diving Services Ltd.

8 The Corran, Auchintraid, Kishorn, IV54 8XB
Tel: 01520733333 Email: info@rsdiving.com
Web: www.rsdiving.com

ELECTRICAL CONTRACTORS

K.G.B. Electrical.

19 Birch Place, Tain, Ross-shire, IV19 1FF
Tel: 01862 893137 Email: george@kgbelectrical.co.uk
Web: www.kgbelectrical.co.uk

Keith Munro Ltd.

Broomlea House, Loans of Tullich, Tain, IV20 1XW
Tel: 07493 827681 Email: info@keithmunro.com
Web: www.keithmunro.com

ENGINEERING / FABRICATION / SHIP & RIG REPAIRS

Emac Engineering.

Unit 3 Inverbreakie Industrial Estate, Invergordon, IV18 0QR
Tel: 01349 854210 Fax: 01349 854250
Email: alex@emacengineering.com
Web: www.emacengineering.com

Global Energy Group.

13 Henderson Road, Inverness, IV1 1SN
Tel: 01463 725460 Email: info@gegroupp.com
Web: www.gegroup.co.uk

Rosskeen Engineering Ltd.

Auchintoul Farm, Rosskeen, Invergordon, IV18 0PL
Tel: 01349 854100 Fax: 01349 854600
Email: info@rosskeenengineering.co.uk
Web: www.rosskeenengineering.co.uk

Semco Maritime Ltd.

Tern Place, Denmore Ind. Est., Bridge of Don, Aberdeen, AB23 8JX
Tel: 01224 223965 Email: uksales@semcomaritime.com
Web: www.semcomaritime.com

Serimax Ltd.

16 Airfield Road, Evanton Ind. Est., Evanton, IV16 9XJ
Tel: 01349 831122 Fax: 01349 831133
Web: www.serimax.com

ENVIRONMENTAL MANAGEMENT

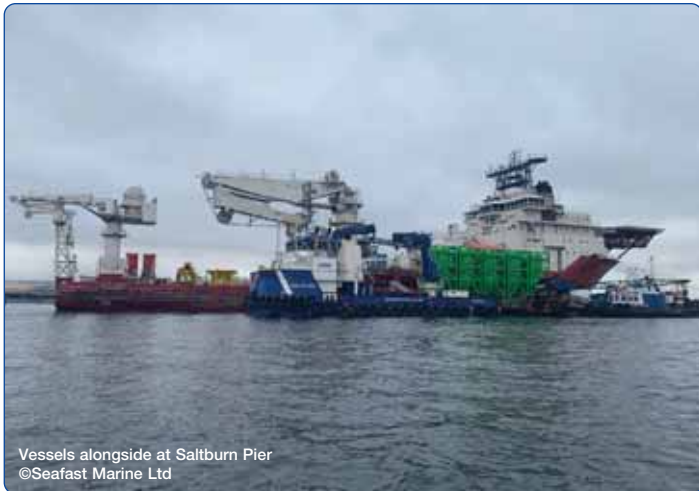
Highland Waste Services Ltd.

Unit 21, Cromarty Firth Industrial Park, Invergordon, IV18 0LT
Tel: 01349 853660 Fax: 01349 854723
Email: info@highlandwasteservices.co.uk
Web: www.highlandwasteservices.co.uk

MSIS Ltd.

Admiralty Base, Shore Road, Invergordon, IV18 0RE
Tel: 01349 854454 Fax: 01349 854456
Email: info@msisgroup.com
Web: www.msisgroup.com





Vessels alongside at Saltburn Pier
©Seafast Marine Ltd

AECOM Imagine it.
Delivered.

Transforming Scotland's ports

Drawing on our integrated offer and global experience, we plan, design and deliver ports for the future.

aecom.com

Contact Jill Meikle for more information:
+44 (0)141 275 6535
jill.meikle@aecom.com

FUEL / LUBRICANTS

Highland Fuels Ltd. / Aberdeen Oils.

Affric House, Beechwood Business Park, Inverness, IV2 3BW
Tel: 0800 224224/01463 220223
Email: sales@highlandfuels.co.uk
Web: www.highlandfuels.co.uk

Certas Energy.

Cromwell Road, Inverness, IV1 1SX
Tel: 01463 232370
Email: sales@certasenergy.co.uk
Web: www.certasenergy.co.uk

Simpsons Oils Ltd.

South Quay, The Harbour, Wick, KW1 5HA
Tel: 01955 604444
Tel: 01349 368307 (Invergordon)
Email: accounts@simpsonoils.co.uk
Web: www.simpsonoils.co.uk

HEAVY HAULAGE

McDonald Haulage.

Rosskeen Old Manse, Invergordon, IV18 0PR
Tel: 01349 853222 Email: info@mcdonaldscaffolding.com
Web: www.mcdonaldscaffolding.com

INDUSTRIAL CLOTHING

Portwest Clothing Ltd.

Fields End Business Park, Thurnscoe, Rotherham, S63 0JF
Tel: 01709 894575
Email: customerservice@portwest.co.uk
Web: www.portwest.co.uk

LOAD TESTING

Water Weights / Unique Group.

Unit 1, Howe Moss Drive, Kirkhill Ind. Est., Dyce, Aberdeen, AB21 0GL
Tel: 01224 820022 – Water Weights
Tel: 01224 723742 – Unique Group
Email: marketing@waterweights.com
Email: uksales@uniquegroup.com
Web: www.uniquegroup.com

MARINE LOGISTICS

PSG Ltd.

Units 20 & 21, Invergordon Service Base, Shore Road, IV18 0EX
Tel: 01349 854544 Email: info@psg-inv.com
Web: www.psg-inv.com

MARINE SURVEYORS / NAVAL ARCHITECTS

J D Wood (UK) Ltd.

The Cabin, Kingsway, Heathmount, Tain, Ross-shire, IV19 1BA
Tel/Fax: 01862 892924 Mob: 07708 417343
Email: enquiries@jdwood.net
Web: www.jdwood.net

MISSION TO SEAFARERS SCOTLAND

Providing support for all seafarers
24 hour Emergency Tel: 01506 842629
(Referral service may be in operation)
Email: timothy.tunley.mts@gmail.com

OILFIELD SERVICES

Highland Oilfield Services Group.

Unit 23, Port of Cromarty Firth, Shore Road, Invergordon, IV18 0HD
Tel: 01224 725856 Email: info@highlandos.com
Web: www.highlandos.com

Environmental specialists, facilitating marine projects from concept to decommissioning

Affric have supported more than 20 harbours in 10 years to gain construction project consents: **Marine Licences, Planning Permission and Harbour Revision Orders.**

Undertaking stakeholder consultation and appropriate environmental assessments to produce **Environmental Impact Assessment Reports, Best Practicable Environmental Option assessments, Pre-application Consultation Reports and Construction Environmental Management Documents.**

The Affric team understand the marine environment, the relevant legislation and consenting processes, marine construction techniques, and the commercial aspects of port operations allowing us to be pro-active members of the design development team.

Affric provide **Environmental Clerk of Works** and **Marine Mammal Observation and Passive Acoustic Monitoring** support.

Operationally we can assist with implementing **Environmental Management Systems** and support operational consenting including obtaining **Waste Management** and **Radioactive Substances** permits required to undertake decommissioning.

Making it Happen
www.affriclimited.co.uk
01808 521498 info@affriclimited.co.uk
Lochview Office, Loch Duntelchaig, Inverness, IV2 6AW



Affric





Northern View, Heathmount, Tain,
Ross-shire, Scotland, IV19 1NE

Naval Architects, Marine Consultants & Surveyors

Design Packages | Project Management | Stability Work
Conversions | MCA Coding | Full CAD Drafting
On/Off Hire Surveys / Bunker Surveys | IMCA Surveys
Surveying (Pre-purchase, Insurance etc)

t: +44(0)1862 892924
m: 07708417343
enquiries@jdwood.net
www.jdwood.net



OUTBOARD ENGINES

Berthon Boat Company.

The Shipyard, Bath Road, Lymington, Hants, SO41 3YL
Tel: 01590 647448
Email: enquiries@berthon.co.uk
Web: www.berthon.co.uk

PACKAGING & CRATING SOLUTIONS

Trojan Crates Limited.

90 Sinclair Road, Torry, Aberdeen, AB11 9PP
Tel: 01224 893311
Email: sales@trojancrates.co.uk
Web: www.trojancrates.co.uk

PORT SECURITY

Kingdom Security.

Kingdom House, 1 Woodlands Park,
Aston Road, Newton-le-Willows, WA12 0HF
Tel: 0845 051 7700
Email: info@kingdom.co.uk
Web: www.kingdom.co.uk/security

Profile Security Services Ltd.

Suite 3, Buchanan Tower, Buchanan Business Park,
Stepps, Glasgow, G33 6HZ
Tel: 01224 773380
Email: enquiries@profilesecurity.co.uk
Web: www.profilesecurity.co.uk

PROJECT MANAGEMENT / CONTRACT MANAGEMENT

Leapmoor LLP.

Municipal Buildings, Suite 3, 122 Shire Street, Gourock, PA19 1QZ
Tel: 01475 648778 Mob: 07803 260145
Email: gary@leapmoor.co.uk
Web: www.leapmoor.co.uk

R.N.L.I.

Invergordon Lifeboat Station.

The Harbour, Invergordon, IV18 0HD
Tel: 01349 853915 Web: www.rnli.org

SAFETY & ASSET INTEGRITY SOLUTIONS

Johnson Controls.

Security House, Hanworth Road, Sunbury-on-Thames, TW16 6DB
Tel: 01932 532367
Email: GMandNservicesUK@jci.com
Web: www.johnsoncontrols.com/ports-of-scotland

SAILORS SOCIETY

Transforming Seafarers' lives
Tel: 02380 515950 Email: enquiries@sailors-society.org

SCAFFOLDING SERVICES

McDonald Scaffolding Services Ltd.

Rosskeen Old Manse, Invergordon, IV18 0PL
Tel: 01349 853222 Fax: 01349 853862
Email: info@mcdonaldscaffolding.com
Web: www.mcdonaldscaffolding.com



Aerial view of Port of Cromarty Firth



Vessels alongside Saltburn Pier



Pilot transfer
in the Cromarty Firth

SHEDS / WAREHOUSING

Bannerman Co. Ltd.

The Burgence, Knockbreck Road, Tain, IV19 1BW
Tel: 01862 892322 Email: bannerman.transport@gmail.com
Web: www.bannerman-company.com

PSG Ltd.

Units 20 & 21, Invergordon Service Base, Shore Road, IV18 0EX
Tel: 01349 854544 Email: info@psg-inv.com Web: www.psg-inv.com

SHIPS AGENTS / FREIGHT FORWARDERS

Clarksons Port Services Ltd.

Matthews Quay, Aberdeen Harbour, Aberdeen, AB11 5PG
Tel: 01224 211500 Email: aberdeen@clarksons.com
Web: www.clarksons.com

Cory Brothers Shipping Agency Ltd.

Service Base, Shore Road, Invergordon, IV18 0EX
Tel: 01349 853590 Email: coryinvergordon@cory.co.uk
Web: www.cory.co.uk

Global Port Services.

37 Shore Road, Invergordon, Ross-shire, IV18 0EH
Tel: 01349 855110 Email: info@globalportservices.co.uk
Web: www.globalportservices.co.uk

Graypen Ltd.

106 High Street, Invergordon, IV18 0DR
Tel: 01349 854260 Email: nigg-bay@graypen.com
Web: www.graypen.com

Highland Stevedoring Ltd.

Oilfield Support Base, Shore Road, Invergordon, IV18 0EX
Tel: 01349 855110 Fax: 01349 853076
Web: www.globalportservices.com

PSG Ltd.

Units 20 & 21, Invergordon Service Base, Shore Road, IV18 0EX
Tel: 01349 854544 Email: info@psg-inv.com
Web: www.psg-inv.com

Seletar Shipping Ltd.

Unit 6, Shore Road, Invergordon, IV18 0HD
Tel: 01349 854012 Email: invergordon@seletar.com
Web: www.seletar.ascoworld.com

STEVEDORES / TRANSPORTATION

Global Port Services.

37 Shore Road, Invergordon, Ross-shire, IV18 0EH
Tel: 01349 855110 Fax: 01349 855119
Email: info@gegroup.com Web: www.globalportservices.co.uk

IDI Services.

Kinmundy Cottage, Newmachar, Aberdeenshire, AB21 0US
Tel: 07734 879069 Email: ian.isaac@idiservices.co.uk
Web: www.idiservices.co.uk

PSG Ltd.

Units 20 & 21, Invergordon Service Base, Shore Road, IV18 0EX
Tel: 01349 854544 Email: info@psg-inv.com
Web: www.psg-inv.com



The Port of Cromarty Firth supply chain has a significant track record in offshore energy projects
©Scotavia Images

CALDIVE

DIVING SERVICES WORLDWIDE

- 40 years of providing diving services to a variety of clients across industry sectors including oil and gas, renewable energy, civil engineering, shipping and nuclear. Diving services include:
 - UWILD planning and execution to the following classification societies: ABS, BV, DNV-GL, Lloyd's Register and RINA
 - Underwater welding and hull repair
 - Cofferdam design and installation
 - Anode replacement and CP measurement
 - NDT – including underwater MPI, Eddy Current testing and ultrasonics
- A range of ROVs with the capability to deliver cost effective ROV hire and manpower solutions, both inshore and offshore.

CONTACT DETAILS:

T: 01349 853688 E: admin@caldive.co.uk
www.caldive.co.uk





The Port of Cromarty Firth operates a 24 hour pilotage service

Whyte Cargo Handlers Ltd.

Harbour Office, South Quay, Ferryden, Montrose, DD10 9SL
Tel/Fax: 01674 676794 Mob: 07876 354711
Email: info@whytecargo.com Web: www.whytecargo.com

TARPAULINS

Tom Morrow Tarpaulins Ltd.

14 Henderson Road, Longman Ind. Estate, Inverness, IV1 1SN
Tel: 01463 220862 Email: enquiries@tm-tarpaulins.com
Web: www.tm-tarpaulins.com

TECHNOLOGY PARTNERS

The Smart Ports Alliance.

Bonavista, Monikie, Broughty Ferry, By Dundee, DD5 3QA
Tel: 07738 888394 Email: contact@smartportsalliance.org
Web: www.smartportsalliance.org

TOWAGE

Caledonian Towage Ltd.

37 Shore Road, Invergordon, IV18 0EH
Tel: 01349 852611 Fax: 01349 853087
Email: tugs@geggroup.com
Web: www.geggroup.com

VIDEO SURVEILLANCE/CCTV

Dallmeier Electronic UK Ltd.

3 Beaufort Trade Park, Pucklechurch, Bristol, BS19 9QH
Tel: 0117 303 9303 Email: dallmeieruk@dallmeier.com
Web: www.dallmeier.com/ports

WEIGHBRIDGES

Port of Cromarty Firth.

Port Office, Shore Road, Invergordon, IV18 0HD
Tel: 01349 852308 Fax: 01349 853181
Email: cfpa@cfpa.co.uk
Web: www.cfpa.co.uk

WORKBOAT OPERATORS

Coastworks Operations Ltd.

8 Allanton Park Terrace, Fairlie, KA29 0AW
Tel: 01475 568572 Fax: 01475 568153
Email: info@coastworks.co.uk Web: www.coastworks.co.uk

Caledonian Towage Limited.

37 Shore Road, Invergordon, Ross-shire, IV18 0EH
Tel: 01349 855160 Email: tugs@geggroup.com
Web: www.caledoniantowage.com

Moray First Marine Ltd.

Wester Oldtown, Roseisle, Elgin, IV30 5YD
Mob: 07775 802963 Email: info@moraymarine.com
Web: www.moraymarine.com



As the leading provider of pre-assembly construction activities to support the offshore wind sector, Global Port Services provides a fully comprehensive range of site enabling and project services, demonstrating a world-class supply chain where every component is unloaded, marshalled, readied for installation, then loaded onto jack-up vessels for transport to the final destination.

- Port Agency Services
- Mobile & Crawler Cranes
- Marine Logistics
- Heavy Transportation

PART OF THE GLOBAL ENERGY GROUP
GEGROUP.COM

www.globalportservices.co.uk



DEME Group's Apollo jack-up vessel in the Cromarty Firth
©New Wave Images



BUBBLE + GOOSE +



LEADING PROVIDER OF ONSHORE INTEGRATED SITE SERVICES



FACILITIES
MANAGEMENT

CATERING
SERVICES

MODULAR
WELFARE UNITS

Operating from Port of Nigg + Port of Cromarty Firth

enquiries@bubbleandgoose.com

West Quay Kitchen, Nigg Energy Park, Nigg IV19 1QU

SMS LTD

Vessel Charter and Logistical Support



Tel: +44 (0)1852 300589

info@specialisedmarinesupport.com

Personnel Transfers | Equipment Transfers | Windfarm Support



Specialised Marine Support Ltd (SMS) is an ISO 9001:2008 accredited company based in Scotland providing support vessels to the offshore renewables and offshore construction industries throughout Europe. All vessels are road transportable.



Cable Support | Guard / Safety Vessel | Survey Support

www.specialisedmarinesupport.com



Advertisers Index

A. Adamson & Co	81	Fraserburgh Harbour Commissioners	164
A.S.A.P. Supplies Ltd	157	Galbraith	131
Aberdeen Compass Adjusting Ltd	147, 172	George Brown & Sons	73
Aberdeenshire Council	174	Girvan Harbour	30
ABPmer	145	Glenalmond Timber Co Ltd	107
AECOM	19, 75, 131, 217	Global Energy Group	213, 215, 220, 222, 224, 226, 227, 229, 231
Affric Limited	217	GPL Customs Services	85
Alfa Shipping Services Ltd	25	Graham Construction	71
A-Plan Insurance	97, 291	Graypen Limited / GP Shipping Limited	85
Arbroath Harbour (Angus Council)	112	Great Glen Shipping Company Ltd	247
Arch Henderson LLP	138, 297	Greenhowe Marine Services	134
Argyll & Bute Council	49	Highland Council	257
Armitt Group	251	Highland Fuels	123
Aspect Land & Hydrographic Surveys Ltd	Inside Front Cover	Highland Industrial Supplies Ltd	197
Aspect Land & Hydrographic Surveys Ltd	60, 148, 271	Holy Loch Port	42
Associated British Ports	32	IDI Services Ltd	211
Atkins Ltd	20, 48	Inland and Coastal Marina Systems Ltd	169
Berthon Boat Company	124	Invest in Perth	110
Blue Machinery (Scotland) Ltd	7	J D Wood (UK) Ltd	218
Boskalis Westminster Ltd	156	J Todd Plant Services Ltd	27, 111
Box Pool Solutions	161	Johnson Controls	4
Brimmond Group	136	JST Services (Scotland) Ltd	37, 44, 46, 144, 255
British Ports Association	314	KIMO International / Fishing for Litter	23, 152, 199, 244
Bubble & Goose	221	KIMO International / Fishing for Litter	270, 277, 301, 311
Buccaneer Ltd	178	Kishorn Port Ltd	262
Caldive Ltd	219	Leapmoor LLP	209, 250
CalMac Harbours	56	Leask Marine	279, 282
Calport Ltd	106	Lerwick Port Authority	292
Clarksons Port Services Ltd	141	Liebherr - GB. For Sales	31
Clydebank Port Services	26	Macduff Ship Design Ltd	143
Coast Offshore	100	Macduff Shipyards Ltd	177
Coastal Connection	22, 55	Mackay Boatbuilders (Arbroath) Ltd	113
Coastworks Operations Ltd	23, 30, 90, 132, 205	Mackinnons Solicitors	139
Collett & Sons Ltd	83	Mallaig Harbour Authority	249
Comhairle nan Eilean Siar	266	Maritime Journal	283, 301
Commercial Drone Footage	25, 87	McLaughlin & Harvey Ltd	273
Corilla Marine	196, 235	Metec Group	15, 75, 211
Cory Brothers	84	Mirren Marine Ltd	21
Craigie Engineering Ltd	160, 290	Mission to Seafarers	11, 35, 74, 87, 148, 210, 290, 313
Creel Maritime Ltd	41, 201	Molson Green	2
Dallmeier Electronic UK Ltd	91	Montrose Port Authority	114
David MacBrayne	17	Moray Council	187
DEME Group Ltd	62	Moray First Marine Ltd	185
DuroWipers	139, 157	Mott MacDonald	142
Ecosse Marine Ltd	10, 72, 80, 122, 129, 208	Navmoor Ltd	Outside Back Cover
Euronete	163, 167, 295	Niras Group (UK) Ltd	155
Everard Insurance Brokers Ltd	19, 53, 118, 173	North East Scotland Stevedoring Ltd	182
Eyemouth Harbour Trust	102	Northerly Marine Services	243, 289
Eyemouth Marine Ltd	103	Northern Lighthouse Board	50
Fairlie Quay	38	NorthLink Ferries Ltd	133
Ferguson Transport & Shipping	55, 242, 245, 250, 255, 260	Northwards Ltd	1, 126
Forth Bridge Stevedoring Ltd	101	Offshore Workboats	22, 54
Forth Logistics Marine Services	63	Oilfast Ltd	9
Forth Ports	66	Orcades Marine Management Cons Ltd	278





SHEARWATER MARINE SERVICES



Innovative and Cost Effective Marine Engineering Solutions



**Ships Husbandry
Services**



**Topside & Underwater Marine
Civil Engineering Support**



**Underwater Welding
Repairs**



Survey & Inspection



**Cathodic Protection
Design & Installation**



Advertisers Index (cont.)

Orkney Islands Council	274, 280, 281
PBP Services	173
Peelports Clydeport	12, 13
Perth Harbour	108
Peterhead Port Authority	150
Port Babcock Rosyth	58
Port of Berwick	104
Port of Cromarty Firth	206
Port of Inverness	192
Portwest	11
Poseidon Navigation Services Ltd	140
Profile Security Services Ltd	21, 91, 142, 291
PSG Marine & Logistics Ltd	202
Rix Shipping (Scotland) Ltd	119
Ross-Shire Diving Services Ltd	45, 190
RPS Group	159
Scarborough Borough Council (SBC Dredging Services)	90
Scotlog Sales Ltd	196
Scottish Photography Productions	105, Inside Back Cover
Scrabster Harbour Trust	238
Sea-Cargo Ltd	128
Seawork 2023 International	135, 246, 300
SecuriGroup	93
Shearwater Marine Services Ltd	320
Shetland Islands Council	302, 307
Simpson Ltd	197, 215, 234, 237
Skipper Expo International 2023	130, 161, 166, 179, 299
SMS Ltd (Specialised Marine Support Ltd)	318
Southbay Civil Engineering Ltd	95
Stoddart Crane Hire	195
Stornoway Port Authority	269
Stornoway Shipping Services Ltd	271
T. Barbour Ltd	51
Tarbert Harbour Authority	43
Targe Towing Ltd	79, 99, 119, 149, 163
Terberg DTS UK Ltd	149
The Seafarers Charity	99, 208, 298
The Smart Ports Alliance	95, 213
Tobermory Harbour Authority	258
Trojan Crates Limited	122, 130
Troon Tug Co Ltd	36
UK Harbour Masters' Association	316
Ullapool Harbour Trust	264
Unique Group	143
VolkerMarine Services	89
W. Knight Watson & Co. Ltd	82
Whittaker Engineering Limited	120
Whyte Cargo Handlers Ltd	69, 117, 146, 158, 171
Wick Harbour Authority	232
Windcat Workboats (Scotland) Ltd	116, 134, 185

+44 (0) 1369 70 5949 shearwatermarine.co.uk

commercial@shearwatermarine.co.uk



PHOTOGRAPHY IN SAFE HANDS



**SPECIALIST
PHOTOGRAPHY SERVICES**



David Pollock - www.scottishphotographyproductions.co.uk | www.facebook.com/scotpics/timeline

E: Scotpics2015@gmail.com | T: 07706 786479



navmoor
AIDS TO NAVIGATION

Marine Data Made Easy

AtoN & Sensor monitoring with historical data & real-time status

Our monitoring boards are made in-house allowing for ease of customisation, and our web-based portal makes it easy for us to integrate any sensor or AtoN, enabling you to make your equipment SMART and the digitisation of your assets a breeze, your data will be at your fingertips through any web-browser including smart phones, and in as close to real-time as you desire. Get in-touch and we'll demonstrate how:

info@navmoor.com 02922 638222

It's What We Do:

- MET Hydro Buoys
- Turbidity Buoys
- Water Quality Buoys
- IALA Compliant Navigation Buoys
- Installation & Maintenance
- Leading Lights
- Sectorised Lights
- LED Lights
- Lighthouse Conversions
- Solarisation of stations
- Decommissioning Skids
- Moorings
- Sinkers
- IALA Compliance Surveys and Recommendations



info@navmoor.com
+44(0)2922 638222

navmoor.com

