

# Ports of Scotland

## Yearbook



# 2016



35th Edition

# Ports of Scotland<sup>®</sup>

## Serving Industry & Commerce

Ports of Scotland<sup>®</sup> is owned and published by Maritime Publications Ltd.

Tel: 0844 800 9437 (Calls cost 7p per minute plus your phone company's access charge).

Email: [info@portsofscotland.co.uk](mailto:info@portsofscotland.co.uk)

Web: [www.portsofscotland.co.uk](http://www.portsofscotland.co.uk)



Cover photograph  
Aerial view of Fraserburgh Harbour  
©Scotavia Images

**Price £24.00**

**Section 4**  
Highlands & Islands  
Pages 188-301

**Section 3**  
North East  
Pages 128-187

**Section 1**  
South West  
Pages 4-61

**Section 2**  
South East  
Pages 62-127

**Section 5**  
Information & Features  
Pages 302-320

Aberdeen	131
Anstruther	105
Arbroath	116
Ardrisaig	37
Ardrossan	16
Ardveinish	259
Ayr	26
Banff	179
Barcaldine	56
Berwick upon Tweed	108
Braefoot	87
Buckie	183
Burghead	187
Burntisland	84
Cairnryan	60
Callanish	259
Campbeltown	40
Clydebank	24
Corpach	237
Cromarty Firth	199
Cullen	186
Cullivoe	294
Dundee	94
Dunoon	43
Eyemouth	106
Fairlie	34
Findochty	187
Fraserburgh	165
Gairloch	246
Garlieston	58
Girvan	59
Glasgow	8
Gourdon	180
Grangemouth	68
Greenock	11
Helmsdale	248
Holy Loch	38
Hopeman	186
Hound Point	87
Hunterston	14
Invergordon	199
Inverkeithing	104
Inverness	191
Isle of Whithorn	58
Johnshaven	180
Kallin	259
Kinlochbervie	245
Kirkcaldy	86
Kirkcudbright	59
Kirkwall	270
Kishorn	251
Kyle of Lochalsh	247
Leith	73
Lerwick	282
Leverburgh	259
Lochinver	244
Lochmaddy	259
Loch Ryan	61
Lossiemouth	181
Lyness	276
Macduff	175
Mallaig	240
Miavaig	259
Methil	85
Montrose	119
Nigg	217
Oban	44
Perth	110
Peterhead	153
Pittenweem	105
Port William	58
Portknockie	186
Portree	249
Portsoy	180
Rosehearty	179
Rosyth	77
Rothsay	43
Scalloway	292
Scapa Flow	274
Scrabster	229
St Monans	105
Stonehaven	181
Stornoway	261
Stranraer	57
Stromness	278
Sullom Voe	296
Tarbert	39
Tobermory	54
Troon	29
Uig	248
Ullapool	254
Whitehills	187
Wick	224

Whilst every care has been taken to ensure the accuracy of the information in this publication Maritime Publications Ltd, (trading as Ports of Scotland) it's shareholders, directors, employees or anyone acting on their behalf do not accept responsibility for any errors, omissions, misrepresentation or misinterpretation. Port users are recommended to verify with the respective Port and Harbour Authorities that the information given in this publication is correct and remains valid for the time of and intended use. Information in the advertisements should be verified with the advertisers. No part of the publication may be reproduced in any form or by any electronic or mechanical means including information storage and retrieval systems without the written permission of the publishers.

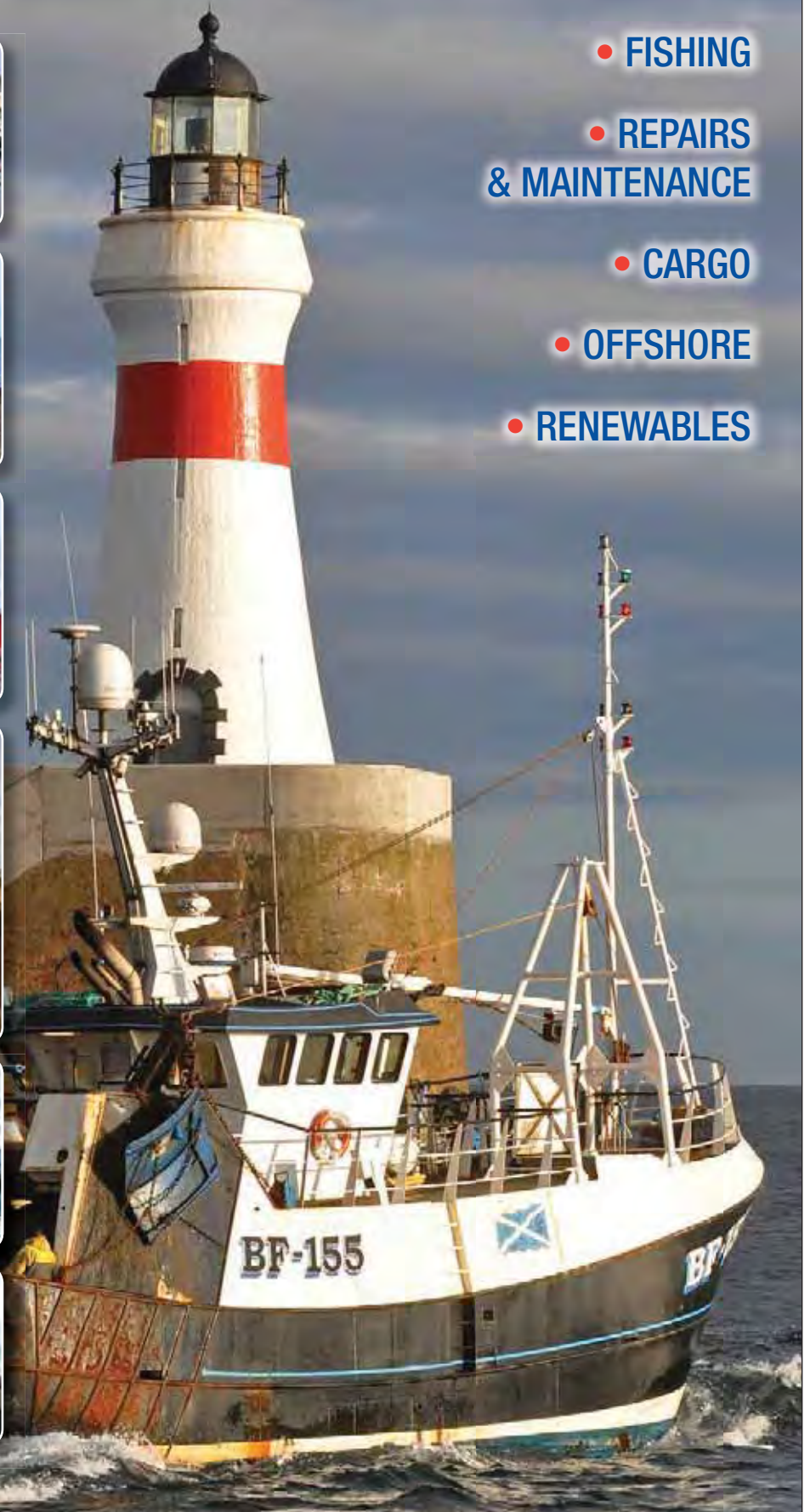
© 2015/16 Maritime Publications Ltd. All rights reserved.





# Fraserburgh Harbour Commissioners

*Your key location in the North*



- FISHING
- REPAIRS & MAINTENANCE
- CARGO
- OFFSHORE
- RENEWABLES

Harbour Office, Shore Street, Fraserburgh AB43 9BR • Tel: +44 (0)1346 515858 • Fax: +44 (0)1346 516641  
Email: [enquiries@fraserburgh-harbour.co.uk](mailto:enquiries@fraserburgh-harbour.co.uk) • [www.fraserburgh-harbour.co.uk](http://www.fraserburgh-harbour.co.uk)



# Fraserburgh



HARBOUR AUTHORITY  
Fraserburgh Harbour Commissioners  
Harbour Office  
Shore Street  
Fraserburgh  
AB43 9BR  
Tel:

01346 515858  
01346 515926 (After Hours)  
01346 516641  
enquiries@fraserburgh-harbour.co.uk  
www.fraserburgh-harbour.co.uk

## PRINCIPAL OFFICIALS

Convenor: Peter Bruce  
Harbour Clerk: Jill Smith  
Harbour Master: Andrew Ironside  
Harbour Superintendent: John Murison  
Harbour Treasurer: Janette Hardie

Location: Latitude 57° 41'N  
Longitude 02° 00'W

Fraserburgh Harbour is located on the north east corner of Scotland. It is ideally positioned for the fishing grounds of the north and east of Scotland as well as the North Sea oil and gas fields and also the emerging renewables market, in particular the projects in the Moray Firth. The location also makes Fraserburgh well placed for cargo trade with Scandinavia and the Baltic Sea ports. Fraserburgh has good road communications to Aberdeen (A952 - 40 miles) with other links to a wide hinterland. Airport and rail facilities are based in Aberdeen. Local transportation facilities and customs services are provided as required.

The harbour has easy access and safe berthing with approximately 2.5 miles of quayside. Previous developments include the deepening of the Balaclava harbour and entrance channel to a depth of 5.9 metres at chart datum (CD). A depth of 6.9 metres at CD is available on the north side of Provost Anderson's Jetty.



Aerial view of North Harbour

The recent project to deepen the North Harbour offers 300 metres of new mooring at a depth of 4.7 metres at CD. This project provides deep water berths which accommodates approximately 15-20 vessels depending on the vessel dimensions and enhances the current safe berthing that the port can offer both to fishing vessels, cargo vessels, oil supply/standby vessels and any business from the offshore renewables market. Each berth will boast shore power and fresh water connections.

The new quay at the west leg of the basin offers a sizeable working area for vessels to carry out essential net repairs or to allow goods to be loaded onto vessels. Significant European Fisheries Fund and Member State funding allowed this project to proceed.

Port movements are controlled from the Watch Tower situated on the West Pier. Vessels entering, leaving or moving in the harbour must report on VHF Channel 12. Port radar is also in operation. Fraserburgh is an ISPS



Aerial view of Fraserburgh Harbour  
©Scotavia Images





Fraserburgh continues to be one of the most successful whitefish and nephrops landing ports

compliant port with a Harbour Guard Security Team which offers a mobile patrol backed up with limited CCTV.

Fraserburgh has two of the most up to date fish markets in the UK both of which are completely refrigerated and capable of maintaining a temperature of +1°C. This allows landing of fish and nephrops over a 24 hour period, 5 days a week with the fish/nephrops being kept in prime condition for sales that take place at a later period. Sales times are Monday to Friday at 0730 hours. The port continues to be one of the most successful whitefish/nephrops ports with more fishing vessel arrivals and departures than any port in the United Kingdom.

Latest statistics show Fraserburgh to be the largest nephrop landing port in Europe. Fraserburgh harbour and bay are designated and approved pelagic landing areas with large quantities of herring and mackerel being landed during the season. The autumn squid fishery takes place a few miles from the port and many of the vessels choose to land through Fraserburgh Fishmarket. Wi-Fi is available in the fishmarket and is available for all users of the facility. This project was funded by the Commissioners with grants awarded by AEFF and Aberdeenshire Council.

The Scottish pelagic fleet is equally well catered for and vessels can land their catch direct to a pelagic processor in the port either by lorry or by pipeline straight into the factory on specific berths. The vast majority of the Scottish pelagic fleet class Fraserburgh as their "home" port and berthing is available for up to twelve of these super trawlers at any time.

Fraserburgh Harbour boasts two ship repair facilities with support services available which cover the full range of facilities demanded by a modern fishing fleet, including engineering, coded welding, water blasting, painting etc. This is complimented by specialist trades in electrical engineering, navigational services, refrigeration, steel and aluminium fabrication.

The latest technology is incorporated in the facilities to provide the highest quality of work, speed the access of vessels onto the facility as well as a safe working environment. Personal attention and the keenest of pricings can be assured throughout.

The Shiplift, located at the south of the harbour, is one of the most up to date facilities of its kind in Europe and is capable of lifting vessels up to 850



**UK Agent for all the Leading Manufacturers  
Offering International Sales and Service Support  
Available 24 Hours a Day, 7 Days a Week**



**Tel: + 44 (0)1261 831644 Fax: + 44 (0)1261 833206**

Sales Enquiries: [sales@echomastermarine.co.uk](mailto:sales@echomastermarine.co.uk)  
Service Enquiries: [service@echomastermarine.co.uk](mailto:service@echomastermarine.co.uk)  
Website: [www.echomastermarine.co.uk](http://www.echomastermarine.co.uk)
















tonnes in weight and 36 metres length. The Shiplift has six berths allowing a wide range of vessel types to be accommodated. Vessels such as large whitefish vessels, small crabbers, aquaculture vessels, ferries, tugs etc come from all over Europe and from various sectors to access the ship servicing expertise from the port and local supply chain companies. It is intended that one berth is used for long term refits such as major steel plating, wood planking, lengthening and re-engineering of vessels.

Internet connectivity and electrical hook ups are available at the shiplift as well as the provision of office and welfare facilities for users. The shiplift is closely managed to maximise utilisation and offer flexibility.

The modern dry dock, located in the Balaclava Inner Harbour, is one of the most modern facilities in the UK and can accommodate larger vessels of 66 metres in length and 14 metres beam including some of the pelagic fleet and oil standby boats. The dry dock building has recently been refurbished and now provides dedicated office/welfare facilities including Wi-Fi and showers for crew members and ancillary staff. There is also additional quayside working area.



Vessel entering Fraserburgh Dry Dock  
Photograph courtesy of David Linkie



Fraserburgh Fish Market  
Photograph courtesy of David Linkie

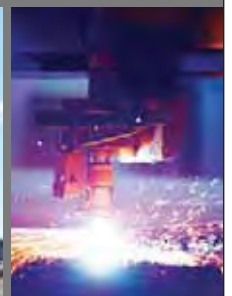
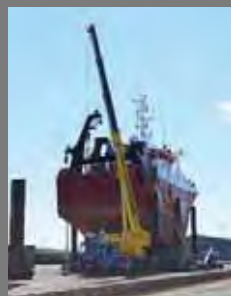
The dry dock is owned and operated by Fraserburgh Harbour Commissioners and dock users are free to contract with any company for vessel work. There are companies operating in Fraserburgh that can provide a turnkey solution for dock users if required. The facility has good utilisation rates.

All berths within the harbour can be made available for commercial vessels or oil related traffic and in particular the North Pier, Provost Parks Jetty and newly deepened North Harbour. Maximum size of vessel afloat at all times is 92 metres x 16 metres and 6.2 metres draught. The new basin at the North Harbour is ideal for servicing oil supply and standby vessels and will help support and enhance the existing relationships built with this sector. Maximum size of vessel afloat at all times is 92 metres x 16 metres and 6.2 metres draught.

Fraserburgh has local stevedores offering a 24 hour service equipped with modern cargo handling equipment, mobile cranes with a lifting capacity of up to 200 tonnes, forklifts and conveyors etc. All types of cargo are handled including grain, fertiliser, coal, sand, road salt and fish products. Lifts in excess of 200 tonnes and 37.5 metres in length can be



*Extensive Refit & Repair Capabilities  
Crane Hire up to 160 tonnes*



**Macduff Shipyards Ltd.**

Reclaimed Ground, Fraserburgh Harbour AB43 9TD  
Tel: 01346 519163 Crane Hire: 07899 918531  
Head Office Tel: 01261 832234  
Email: info@macduffshipyards.com  
www.macduffshipyards.com

*Combining Tradition, Experience,  
Craftmanship & Technology and building  
on over seven decades of experience*

accommodated. There is a 50 tonne capacity calibrated weighbridge available adjacent to the harbour office.

Fraserburgh is ideally placed, both geographically and physically, to be a major part of the emerging renewables industry and in particular the round three developments proposed for the Moray Firth. Fraserburgh Harbour signed a Memorandum of Understanding (MOU) with Moray Offshore Renewables Ltd (MORL) in 2014. The MOU formalises the commitment of both EDPR and the Harbour Authority to work together and investigate developing operations and maintenance facilities for the proposed Telford, Stevenson and MacColl offshore windfarms.

The Commissioners and their strategic partners Aberdeenshire Council and North East Scotland College, supported by Scottish Enterprise, are delighted with this development which could see Fraserburgh Harbour as the location of a major operations and maintenance base for vessels supporting this industry. The MOU makes provisions for MORL and Fraserburgh Harbour to properly consider the facilities, services and skills available, both currently and planned, which can be used for the operation and maintenance of the windfarms.



A 60 metre long pontoon providing 26 berths at the Faithlie Basin  
Photograph courtesy of David Linkie



New Blacksands Quay  
at North Harbour

The development of offshore wind not only brings the prospect of sustainable, low-carbon electricity, but also creates economic opportunities for the whole of the operational life of the infrastructure. It is estimated that 330 jobs will be supported by operations and maintenance activities over the lifetime of the wind farms.

Fraserburgh harbour has the ready-made provision of deepwater berthing and adjacent industrial ground for onshore development within the port. In addition the outstanding ship repair facilities and associated local support service expertise may also be attractive to the offshore wind farm operators as a maintenance and repair hub for the vessels which will maintain the turbines.

A 60 metre long pontoon facility providing twenty six berths for small vessels including leisure craft was installed in the south basin of the Faithlie Basin in December 2014. Twenty four of the twenty six berths have been allocated with the remaining two berths made available for visiting yachts. The pontoon facility boosts electrical and water provision with access to the facility by a security gate. There is a waiting list for a pontoon berth and should anyone wish to add their name to the list please contact the Harbour Office.



**POSEIDON NAVIGATION SERVICES LTD**

**ADMIRALTY CHARTS & PUBLICATIONS**

**COMPASS ADJUSTING & REPAIRS 24/7**

**DIGITAL SOLUTIONS**

**NAUTICAL INSTRUMENTS**

All ports covered in Scotland  
Contact: **Thomas Gunn**

 Poseidon Navigation Services  
[www.poseidonnavigation.com](http://www.poseidonnavigation.com)

**Mobile: +44 7787 417797 Office: +44 1542 841245**  
**E-mail: [tom.gunn@poseidonnavigation.com](mailto:tom.gunn@poseidonnavigation.com)**



The modern dry dock  
at Balaclava Inner Harbour

The Commissioners acknowledge the financial support provided by AEFf, Aberdeenshire Council and third party funding towards the provision of this facility.

Work on a new high voltage supply network commenced in 2015 and will be fully operational during early 2016. This project has seen the electricity capacity in the harbour area increased enabling the Commissioners to offer electric hook up to vessels as well as providing the essential capacity for businesses who wish to expand. Vessels utilising the shore power hook up facility will be able to shut down their diesel back up engines which will improve the harbours green credentials. Funding for the project has been provided by Fraserburgh Harbour Commissioners, Scottish Enterprise, Aberdeenshire Council and Marine Scotland / EFF.

## Useful Contacts:

See Fraserburgh Useful Contacts Page 172

**PBP SERVICES - PETER BRUCE (PATSY)**  
 BLAST CLEANING & PROTECTIVE COATINGS SINCE 1968  
 INTERNAL SHIPHALL / DRY DOCKS UP TO 165 METRES



**SPECIALIST FACILITIES | PROTECTIVE COATINGS | REGISTERED TECHNICIANS**

**PBP SERVICES**  
 Protective Coating Systems

Ship Repair / Refit Works, Blast Cleaning and Protective Coating Services to the Marine, Oil and Gas and Industrial Markets.

T: +44 (0)1346 514056 | E-mail: [info@pbpservices.co.uk](mailto:info@pbpservices.co.uk) | [www.pbpservices.co.uk](http://www.pbpservices.co.uk)



Fraserburgh has facilities to cater for all types of vessels

NORTH EAST

# The first choice for cargo handling We can handle it!



*“The provision of cargo handling, crane hire services & associated labour”*

Whyte Cargo Handlers Limited, South Quay, Ferryden, Montrose DD10 9SL  
 Tel/Fax: 01674 676794 • Email: [info@whytecargo.com](mailto:info@whytecargo.com) • [www.whytecargo.com](http://www.whytecargo.com)





# Port Facilities:

## ANCHORAGE

Safe anchorage located North pier lt. brg. 281 true distance 3.5 to 5 cables.

## COLD STORAGE

Private cold storage available in the vicinity of the port.

## CRANE HIRE

Mobile cranes up to 200 tonnes, fork-lifts, elevators etc, allow an average 1,500 tonnes per day discharge.

## DEEP WATER BERTHS

The Harbour has approximately 2.5 miles of quays. Outer entrance channel provides 8.9 metres at chart datum, other basins details listed below:

Berthing	Chart Datum	Minimum depth (m)	Maximum depth (m)	Quayside berthing length (m)
Inner Balaclava	5.6	5.9	9.6	290
Outer Balaclava	5.9	6.2	9.9	560
Balaclava Outer Harbour	5.9	6.2	9.9	320
North Harbour	4.7	5.0	8.7	300
South Harbour (north)	3.2	3.5	7.2	400
South Harbour (south)	3.2	3.5	7.2	260
Faithlie Basins	3.2	3.5	7.2	860
Inner Entrance Channel	5.9	6.2	9.9	
Outer Entrance Channel	8.9	9.2	12.9	



CREATED BY THE FISHING INDUSTRY  
FOR THE FISHING INDUSTRY

BOX HIRE IS OUR BUSINESS -  
EXCELLENCE OUR TRADEMARK

Gayle Graham (Managing Director) 07919 000612  
Mandie Greig (Operations Coordinator) 07894 910483  
Davie Mckenzie (Box Wash Supervisor) 07814 711203  
Grant Knox (Transport Coordinator) 07711 897143

Aberdeen: 07894 910460

Fraserburgh: 07711 897052

Peterhead: 07711 897068

Office: 01779 401856 Fax: 01779 476782

Email: enquiries@bps-scotland.co.uk

## DRY DOCK / SHIPLIFT

Excellent support services are available and cover the full range of facilities demanded by a modern fishing fleet, including engineering, coded welding, painting etc. together with the specialised trades of electrical engineering, navigational services, refrigeration, steel and aluminium fabrication. In the provision of these facilities care has been taken to ensure that the latest technology is incorporated to provide the highest quality of work, speed the access of vessels onto the facility as well as a safe working environment. The Shiplift was completed in 2000 and is one of the most modern facilities of its kind in Europe. It is capable of lifting vessels up to 850 tonnes in weight, 36 metres in length and provides berths for six vessels. It is intended that one berth be used for long term refits such as major steel plating and wood planking also lengthening and reengineering of vessels.

The Drydock was completed in 1992 and is one of the most up to date facilities of its kind in UK offering a working area of 66m x 14m with labour and time saving hydraulic operative bilge supports.



M.V. Forever Grateful exiting Fraserburgh Harbour  
Photograph courtesy of David Linkie



### ELECTRIC POWER

Shore power facilities to all vessels berthing within the port; 240/415 volts.

### FISHMARKET

Fraserburgh Harbour operates two of the most up to date fishmarkets which are completely chilled and capable of maintaining a temperature of +1°C.

This allows whitefish/nephrop landings to take place 24 hours a day, 5 days a week whilst keeping the fish in prime market condition

Fraserburgh operates a fish auction 5 days a week to accommodate all sectors of the industry.

### FUEL / FRESH WATER

Available at all berths.

### GRAIN SAMPLING

Gantries to facilitate grain sampling from lorries can be arranged when necessary.

### PILOTAGE

Pilotage is compulsory for commercial vessels of 300 GRT and over. A minimum of one hour's notice is required for a pilot, with the following information, V/L dimensions, ETA and ETD.

### PONTOONS

Fraserburgh Harbour has recently installed a 26 berth 60 metre long pontoon facility in the South Harbour. It is anticipated that this will encourage additional leisure vessel usage of the port. This project has benefited from AEFF, Local Council and third party funding.

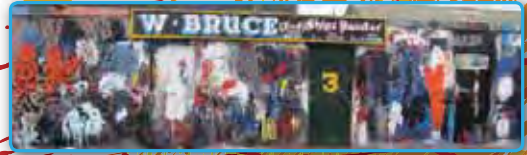
### SECURITY

CCTV, ISPS compliant, independently operated Harbour Patrol System. From 1800hrs – 0600hrs (seven days a week).

### STEVEDORING / PORTERAGE

Local private stevedoring companies can supply labour and equipment.

## William B Bruce (Ship Painters) Ltd.



Established in 1960 and has been managed by Fred since 1982, giving us vast experience in our field.

Our workforce includes numerous staff, each with more than 25 years' service and who take pride in their work guaranteeing the best finished product within the area.

Fred and his team strive to be professional, helpful and friendly whilst providing all your cleaning, preparing and painting/finish covering needs to your surfaces at a fair price for an excellent service.

Harbour/Yard: Reclaimed Ground, Fraserburgh, AB43 9TD

Tel: 01346 514158 or 518499 • Mobile: 07768 580 678

Email: [info@bruce-painters.co.uk](mailto:info@bruce-painters.co.uk)

### TOWAGE

Light towage is operated by the Harbour pilot boat which has a main propulsion unit of 175 hp.

### VHF RADIO COMMUNICATION

Control Tower on the west pier is manned 24 hours a day with VHF and radar cover, VHF channels 12 and 16. All vessels must report prior to arriving, sailing or manoeuvring within the harbour.

### WEATHER FORECASTS

Up to date weather forecasts can be obtained from the watch tower by calling VHF Channel 12 or 01346 515926

### WASTE FACILITIES

Waste collected by Harbour Authority. Waste management plan available.

### WEIGHBRIDGE

50 tonnes capacity.

Weighbridge is available adjacent to the Harbour Office.



Nigg South Quay  
Client: Global Energy



Berth 1 Realignment Loch Ryan  
Client: P&O



Fraserburgh Harbour Deepening  
Client: Fraserburgh Harbour Commissioners



## Marine Engineering Specialists

McLaughlin & Harvey is one of the UK's leading Building and Civil Engineering Contractors.



Loch Ryan Port Development  
Client: Stena Line



Hatson Pier Extension  
Client: Orkney Island Council



Invergordon Service Base  
Client: Cromarty Firth Port Authority



Torry Quay Realignment  
Client: Aberdeen Harbour

Contact: James Nicholl, Civil Engineering Procurement Manager  
Email: [james.nicholl@mclh.co.uk](mailto:james.nicholl@mclh.co.uk) Telephone: 028 9034 2777

[www.mclh.co.uk](http://www.mclh.co.uk)

# Useful Contacts:

## CHANDLERS

**Blue Anchor Chandlery.**  
100 Shore St, Fraserburgh, AB43 9BT  
Tel/Fax: 01346 511050

## Caley Fisheries Ltd.

1-9 Dalrymple Street, Fraserburgh, AB43 9BH  
Tel: 01346 513193 Fax: 01346 517049  
Email: stores@caley-fisheries.co.uk  
Web: www.caley-fisheries.co.uk

## CRANE HIRE

### Macduff Crane Hire.

The Harbour, Macduff, AB44 1QT  
Tel: 01261 832234 Fax: 01261 833541  
Email: info@macduffshipyards.com  
Web: www.macduffshipyards.com

### Whyte Crane Hire Ltd.

Tipperty Industrial Centre, Ellon, AB41 8LZ  
Tel: 01224 729000 Fax: 01224 729001  
Email: info@whytecranes.com  
Web: www.whytecranes.com

## DIVING / MARINE CONTRACTORS

### Caldive Ltd.

29 Mackean Crescent, Castle Avenue Ind. Est., Invergordon, IV18 0SD  
Tel: 01349 853688 Fax: 01349 853677  
Web: www.caldive.co.uk

## ENGINEERING / FABRICATION / SHIPBUILDERS

### Charles Tait Marine Engineers.

Harbour Road, Fraserburgh, AB43 9TB  
Tel: 01346 517681 Fax: 01346 514724

### D.R. Diesel.

1 Harbour Road, Fraserburgh, AB43 9TB  
Tel: 01346 517111/517444 Fax: 01346 517222  
Web: www.drdiesel.co.uk

### Fraserburgh Engineering Co. Ltd.

19 Reclaimed Ground, Fraserburgh, AB43 9TD  
Tel: 01346 514284 Fax: 01346 516797  
Web: www.silverline.is

### John S Pirie LLP.

Harbour Road, Fraserburgh, AB43 9BN  
Tel: 01346 513314/513880 Fax: 01346 516884

### MacDuff Shipyards Ltd.

Reclaimed Ground, Fraserburgh, AB43 9TD  
Tel: 01346 519163 Fax: 01346 518548  
Web: www.macduffshipyards.com

### Marine Diesel Services (Scotland) Ltd.

Unit 5b Muir of Ord Ind Estate, Great North Road, Muir of Ord, IV6 7UA  
Tel: 01463 870920 Mob: 07714 954114 Fax: 01463 871920  
Email: jean@marinedieselservices.co.uk  
Web: www.marinedieselservices.co.uk



**NORTH WEST MARINE**  
DIVING & MARINE SPECIALISTS

**Inspections, repairs and installations;  
Harbour works, piers/jetties,  
pontoons, fish farms.  
Specialists in underwater work.**

**Our equipment includes:**  
22m workboat for towing and lifting.  
16m demountable Meercat, 15m Multicat.  
All boats with cranes and winches.  
ROVs and own decompression chamber.  
Industry approved contractor.

**North West Marine Ltd.**  
7e Glengallan Road, Oban, Argyll, PA34 4HG  
Tel: 01631 565740 • Fax: 01631 565780  
Email: enquiries@northwestmarine.co.uk  
www.northwestmarine.co.uk

## FISH VESSELS OWNERS / AGENTS / SALES

### Caley Fisheries Ltd.

1-9 Dalrymple Street, Fraserburgh, AB43 9BH  
Tel: 01346 513193 Fax: 01346 517049  
Web: www.caley-fisheries.co.uk

### Denholm Seafoods Ltd.

East Quay, Peterhead, AB42 1JF  
Tel: 01779 477380 Fax: 01779 478783  
Web: www.denholm-seafoods.com

### Fraserburgh Inshore Fishermen Ltd.

100 Shore Street, Fraserburgh, AB43 9BT  
Tel: 01346 517769 Fax: 01346 515032

### Peter & J. Johnstone Ltd.

7 Balaclava Quay, Fraserburgh, AB43 9EB  
Tel: 01346 518366 Fax: 01346 513154

### Westward Fishing Company.

Heritage House, 141 Shore Street, Fraserburgh, AB43 9BP  
Tel: 01346 514228 Fax: 01346 513175  
Web: www.westwardfishing.co.uk

## FUEL / LUBRICANTS

### ASCO Fuels & Lubricants

ASCO House, Sinclair Road, Torry, Aberdeen, AB11 9PL  
Tel: 01224 580396 Fax: 01224 576172 Web: www.ascoworld.com

### John A. Smith & Sons.

12 Seagate, Peterhead, AB42 1JP  
Tel: 01779 472800 Fax: 01779 491632

### Northern Oils.

Indulf House, Lintmill, AB56 4XQ  
Tel: 01542 832465 Fax: 01542 833550 Web: www.northernoils.co.uk

## ICE SUPPLIERS

### Faithlie Ice Co. Ltd.

Harbour Road, Fraserburgh, AB43 5TB  
Tel: 01346 515010 Fax: 01346 517025



M.V. Grampian Talisman and M.V. Endeavour IV berthed in North Harbour



Aerial view of Fraserburgh shiplift repair facility  
©Scotavia Images



#### **MARINE ELECTRONICS / SERVICING**

##### **Buccaneer Ltd.**

Buccaneer House, 4 Union Road, Macduff, AB44 1UJ  
Tel: 01261 835199 Fax: 01261 833824  
Web: [www.buccaneer-ltd.co.uk](http://www.buccaneer-ltd.co.uk)

##### **Echomaster Marine Ltd.**

21 Shore Street, Macduff, AB44 1UB  
Tel: 01261 831644 Fax: 01261 833206  
Web: [www.echomastermarine.co.uk](http://www.echomastermarine.co.uk)

##### **Furuno (UK) Ltd.**

South Breakwater, Fraserburgh, AB43 9TD  
Tel: 01346 518300 Fax: 01346 512545  
Web: [www.furuno.co.uk](http://www.furuno.co.uk)

##### **R.D. Downie Ltd.**

133 Shore Street, Fraserburgh, AB43 9BP  
Tel: 01346 411659 Fax: 01346 515776  
Web: [www.rddownie.co.uk](http://www.rddownie.co.uk)

##### **Selex ES.**

Harbour Road, Fraserburgh, AB43 9TB  
Tel: 01346 518187 Fax: 01346 515282  
Web: [www.selex-es.com](http://www.selex-es.com)

##### **R.N.L.I.**

##### **Fraserburgh Lifeboat Station.**

Shore Road, Fraserburgh, AB43 9BR  
Tel: 01346 515162 Web: [www.rnli.org](http://www.rnli.org)

##### **R.N.M.D.S.F.**

##### **Fishermen's Mission.**

Shore Street, Fraserburgh, AB43 9BP  
Tel: 01346 518388 Fax: 01346 517664  
Web: [www.fishermensmission.org.uk](http://www.fishermensmission.org.uk)

#### **SHIPS AGENTS / FREIGHT FORWARDERS**

##### **Euroline Shipping Co. Ltd.**

Harbour Office, Shore Street, Fraserburgh, AB43 5BR  
Tel: 01346 512999 Fax: 01224 593444  
Web: [www.euroline-shipping.co.uk](http://www.euroline-shipping.co.uk)

##### **Fraserburgh Commercial Co. Ltd.**

Harbour Office, Shore Street, Fraserburgh, AB43 9BR  
Tel: 01346 512111 Fax: 01346 514068  
Web: [www.smithandschultze.co.uk](http://www.smithandschultze.co.uk)

#### **SHIP PAINTING**

##### **Alexander Paterson.**

30 Shore Street, Macduff, AB44 1TT  
Tel: 01261 832225 Mob: 07977 403421 Fax: 01261 833840

##### **Davidsons Marine & Industrial Painters.**

Seagate, Peterhead, AB42 1JP  
Tel: 01779 474455 Fax: 01779 475218  
Web: [www.davidsons-ships-painters.co.uk](http://www.davidsons-ships-painters.co.uk)

##### **PBP Services.**

Slip-way, Harbour Road, Fraserburgh, AB43 9TB  
Tel: 01346 514056 Fax: 01346 519424  
Web: [www.pbpservices.co.uk](http://www.pbpservices.co.uk)

##### **W. B. Bruce Ltd.**

Reclaimed Ground, Slipway, Fraserburgh, AB43 9TD  
Tel: 01346 514158 Fax: 01346 515044  
Email: [info@bruce-painter.co.uk](mailto:info@bruce-painter.co.uk)

#### **SHIP STORES**

##### **MSS Ltd.**

Unit 6 Commercial Quay, Aberdeen, AB11 5PH  
Tel: 01224 877722 Fax: 01224 249944 or

Unit 8, Forbes Court, Middlefield Industrial Estate, Falkirk, FK2 9HQ

Tel: 01324 624492 Fax: 01324 637144  
Web: [www.merseysideshipstores.co.uk](http://www.merseysideshipstores.co.uk)

#### **STEVEDORES**

##### **Whyte Cargo Handlers Ltd.**

Harbour Office, South Quay, Ferryden, Montrose, DD10 9SL  
Tel/Fax: 01674 676794 Mob: 07876 354711  
Email: [info@whytecargo.com](mailto:info@whytecargo.com) Web: [www.whytecargo.com](http://www.whytecargo.com)



**For a Quotation**  
Please call 01732 224680

## **Port Authorities Cover**

Everard Insurance provide cost effective and tailored packages for Port Authority liability, equipment and property insurance.

Our other Marine products include Marine Hull, War & Strikes, Protection & Indemnity, Worldwide Imports and/or exports of cargoes, Commercial Combined, Stevedoring Liability, Combined Liability and Professional Indemnity Insurances.

##### **Everard Insurance Brokers Ltd.**

21 Queen Street, Liberty Square, Kings Hill, West Malling ME19 4DA  
Tel: 01732 224 680 Fax: 01732 873393 Email: [info@everardinsurance.co.uk](mailto:info@everardinsurance.co.uk)

**[www.everardinsurance.co.uk](http://www.everardinsurance.co.uk)**

Please contact Sarah Cracroft or and Jamie Smith

